

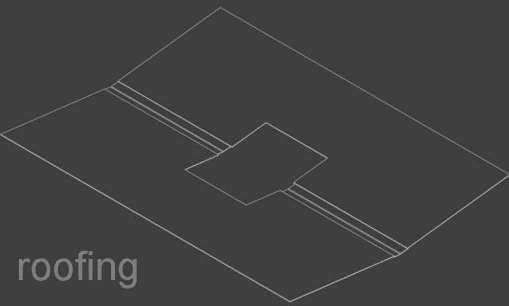


Location
scale 1-2000

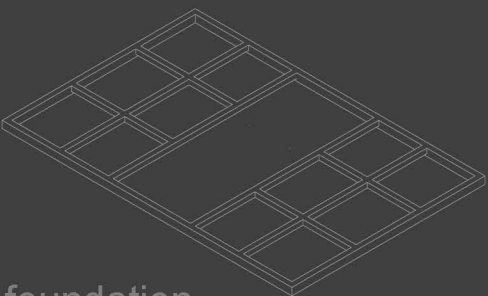
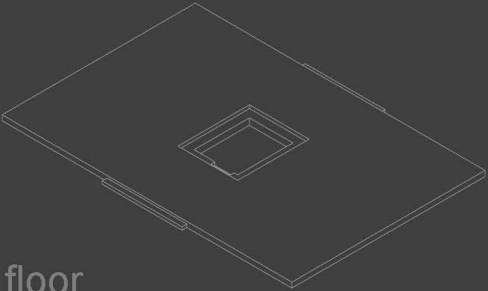
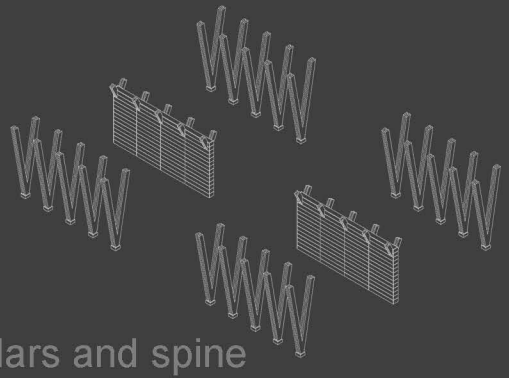
Lazaropole is a village in the Municipality of Mavrovo and Rostusha, North Macedonia. Situated on a plateau at Mount Bistra and surrounded by beech and oak forest at 1,350 m altitude, it is one of the highest settlements in the country. The village is named after a local medieval hero, Lazar, who according to legend was the sole survivor of a Turkish attack on his village. The rest of the townspeople were killed in a cave where they had sought refuge, while Lazar, the only survivor, crawled outside and built a new town.

There are about 400 houses in the village. The older ones reveal the traces of the Mijaci highland building style. The village was the birthplace of numerous authors, educators, carvers, teachers, fresco and icon painters, and constructors. The traditional Macedonian folk dance Teškoto is from the area of Lazaropole. Some significant people born in Lazaropole are Simon Drakul (Macedonian writer), Mate Grujovski, Grujčin Kokaleski and Ante Popovski(Macedonian writer).

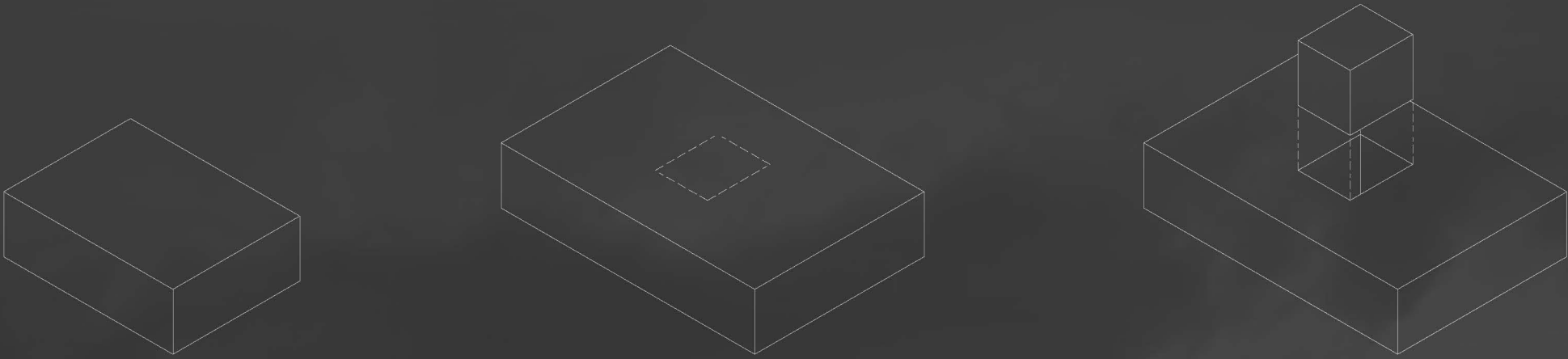
construction diagram



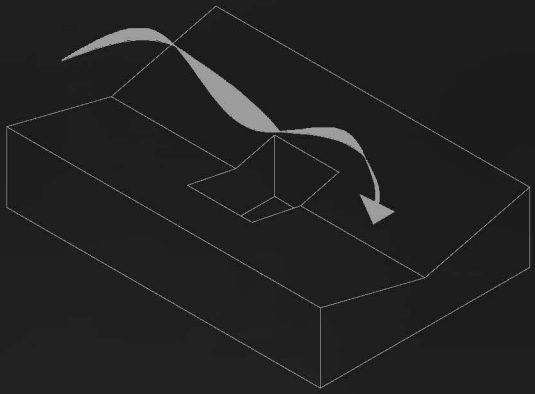
roof construction

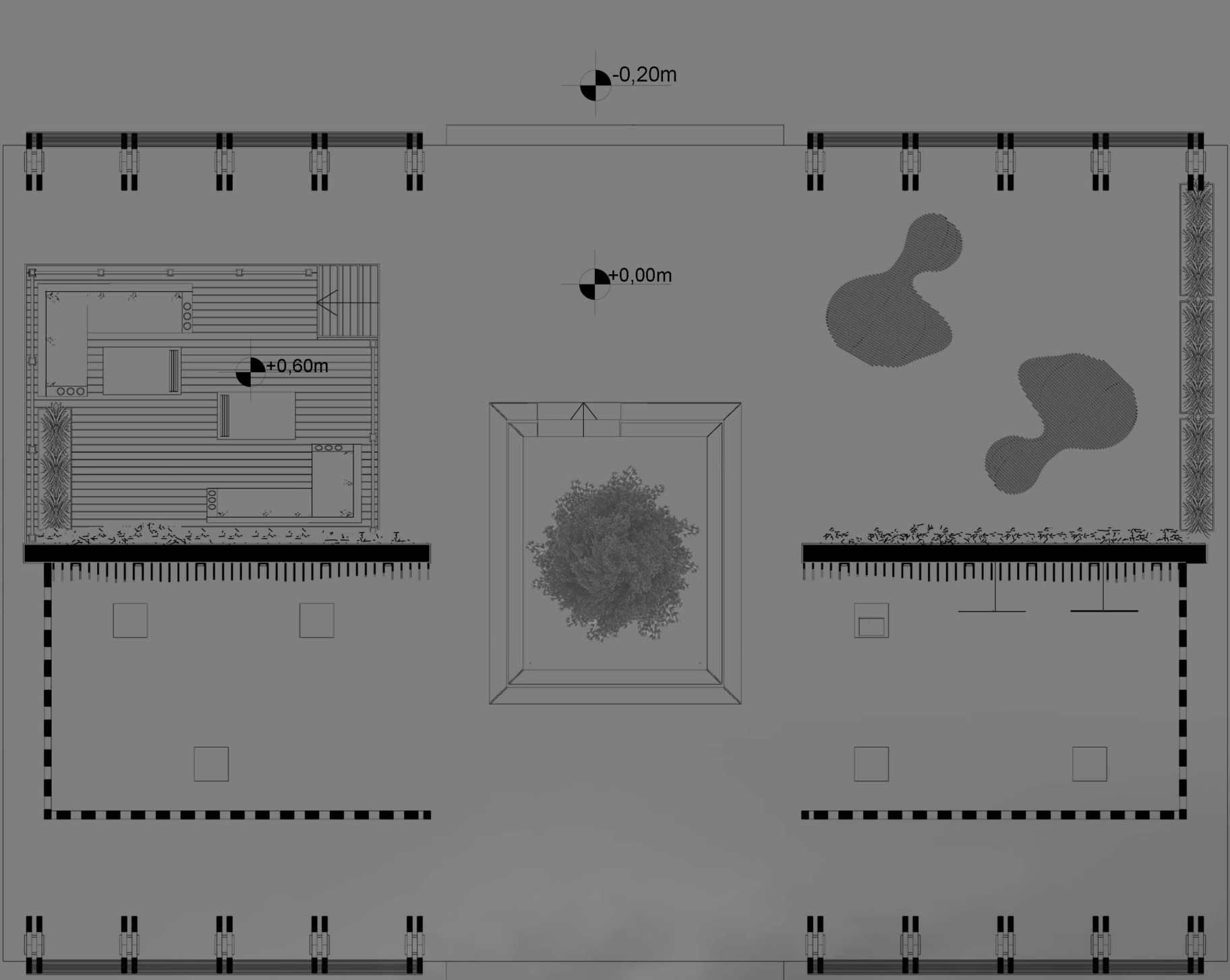


foundation



Phases of creating the form:
Rectangular basis- central focus,-taking out a vertical subject- defining finesse





PLAN VIEW

scale 1-75

NORTH VIEW



scale 1-75

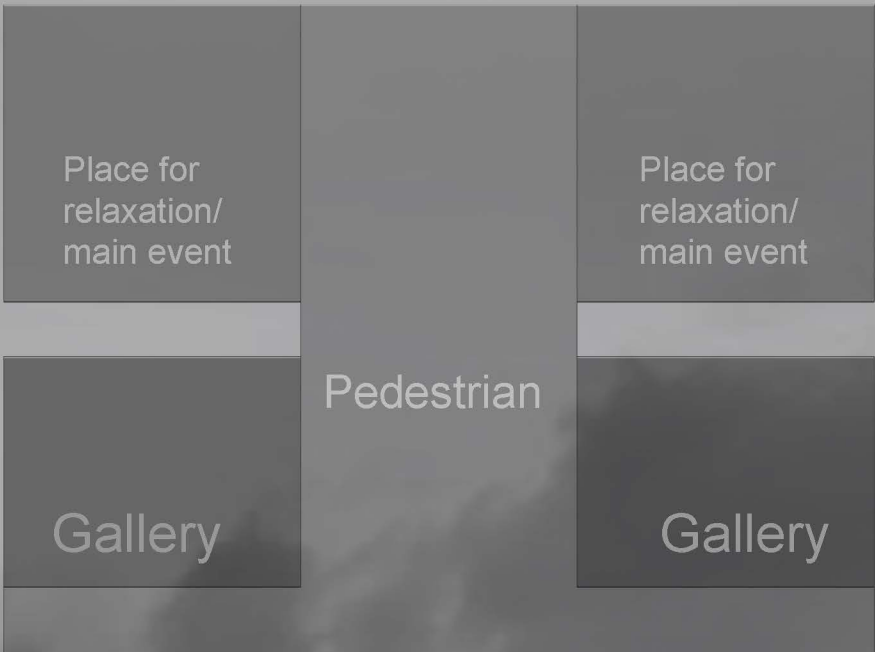
LONGITUDINAL
SECTION



scale 1-75



Realistic 3d views:



Distribution of functions
-plan view

The idea of this project is to design a place where people can do activities and spend time fulfilled with joy and happiness together. This very same idea starts with the square placed in the middle of the rectangular basis. In the center of the square stands a tree surrounded with benches for sitting. The tree symbolizes many things but in the exact situation it symbolizes unity and togetherness. The pavilion is made of three parts, the square with the three and the sitting benches which is intended for people to sit there, share their thoughts, stories and wisdom, the relax part, where people can just sit, relax and simply enjoy the moment together and the gallery part where people can see and maybe learn some important historical and educational things and is divided into two parts: the gallery on the left side of the rectangle is committed for some world known people who advocated for togetherness and some of their most famous quotes, and the gallery on the right side of the rectangle committed for Lazaropole's outstanding history and it's most significant people.

WEST VIEW



scale 1-75

TRAVERSE
SECTION



scale 1-75