

The Oasis of Peace and Togetherness

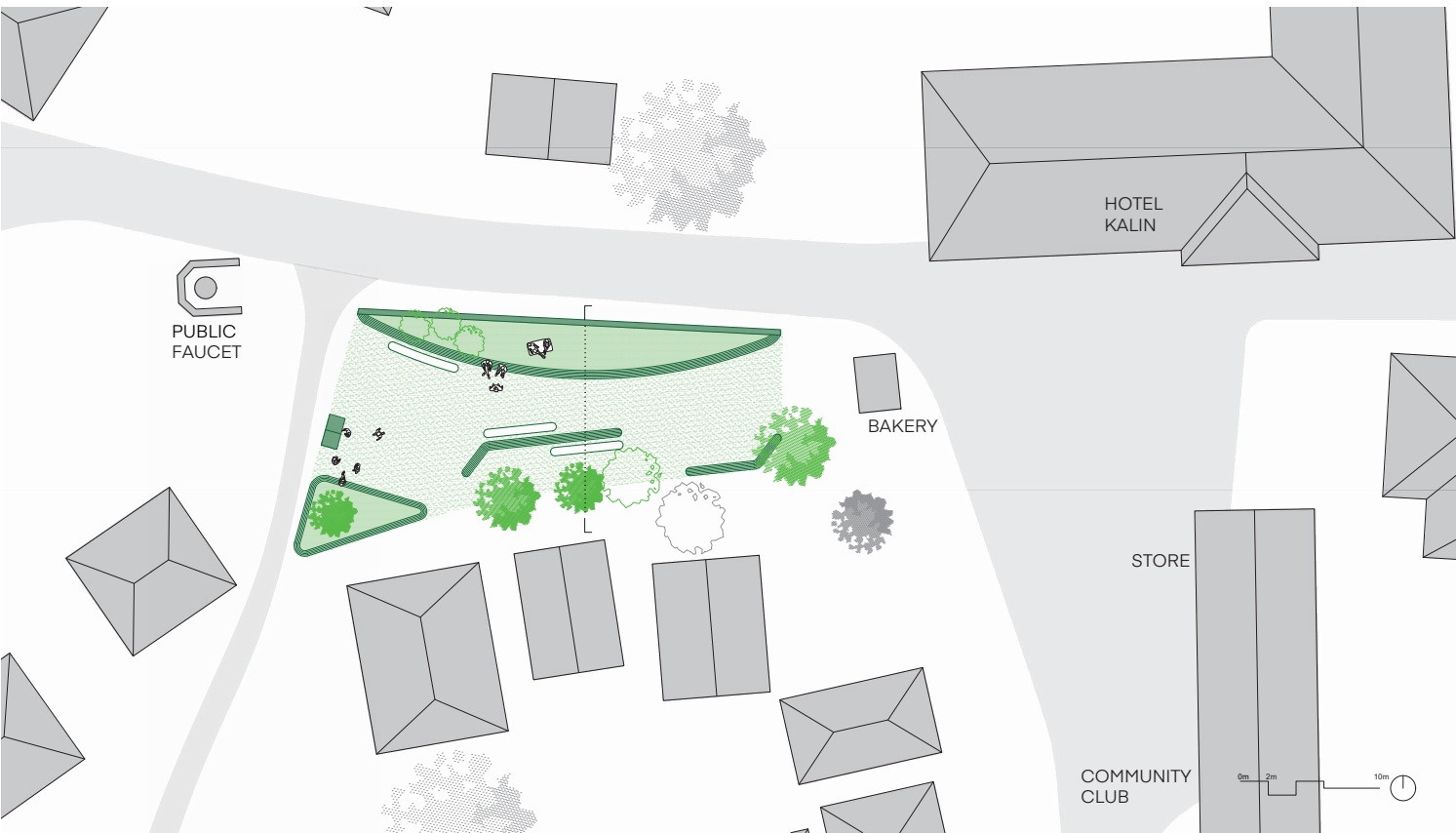


The oasis of peace and togetherness, presents a new inviting public space to residents and visitors of Lazaropole. Bordering the road that connects Lazaropole's main square and the rest of the city stretching out to the west, the area will be located on the busiest place of the city. By having a multifunctional bench that also serves a barrier for cars, its guaranteed to be a car-free place. As such, people will feel invited to walk through this area instead of the main road, which also raised the chance of them sitting down in the area. With the many cornered benches, and the tables next to some of them, the area also contributes to opening new interactions between people. During the day, people can sit down with a fresh baked bread from the existing bakery, bordering the east side of the area, whereas later on the day people can take the initiative to use the new grill on the western end. As one of the buildings at the main square is a hotel, visitors of the area might come to sit down in this new place, as it is the closest recreational spot in the direct proximity. Thus, new interactions between locals and visitors are bound to happen.



With the way the setting is planned, togetherness is the red line in the design here. With the setting being able to sit around in a circle, where in the west the grill serves as an extra central program (eastern bakery is a bit more outside the area), not only does the car free zone invite people to take a walking route through this area, people are invite to sit down. People can either enjoy the sun or find a nice spot in the shade provided by the many fruit trees bordering the south, which also provide fruits to be picked by the visitors to enjoy, or people can start op the grill and can enjoy a nice made meal.

PICTURE 1 AND 2: 3D view of the entire area



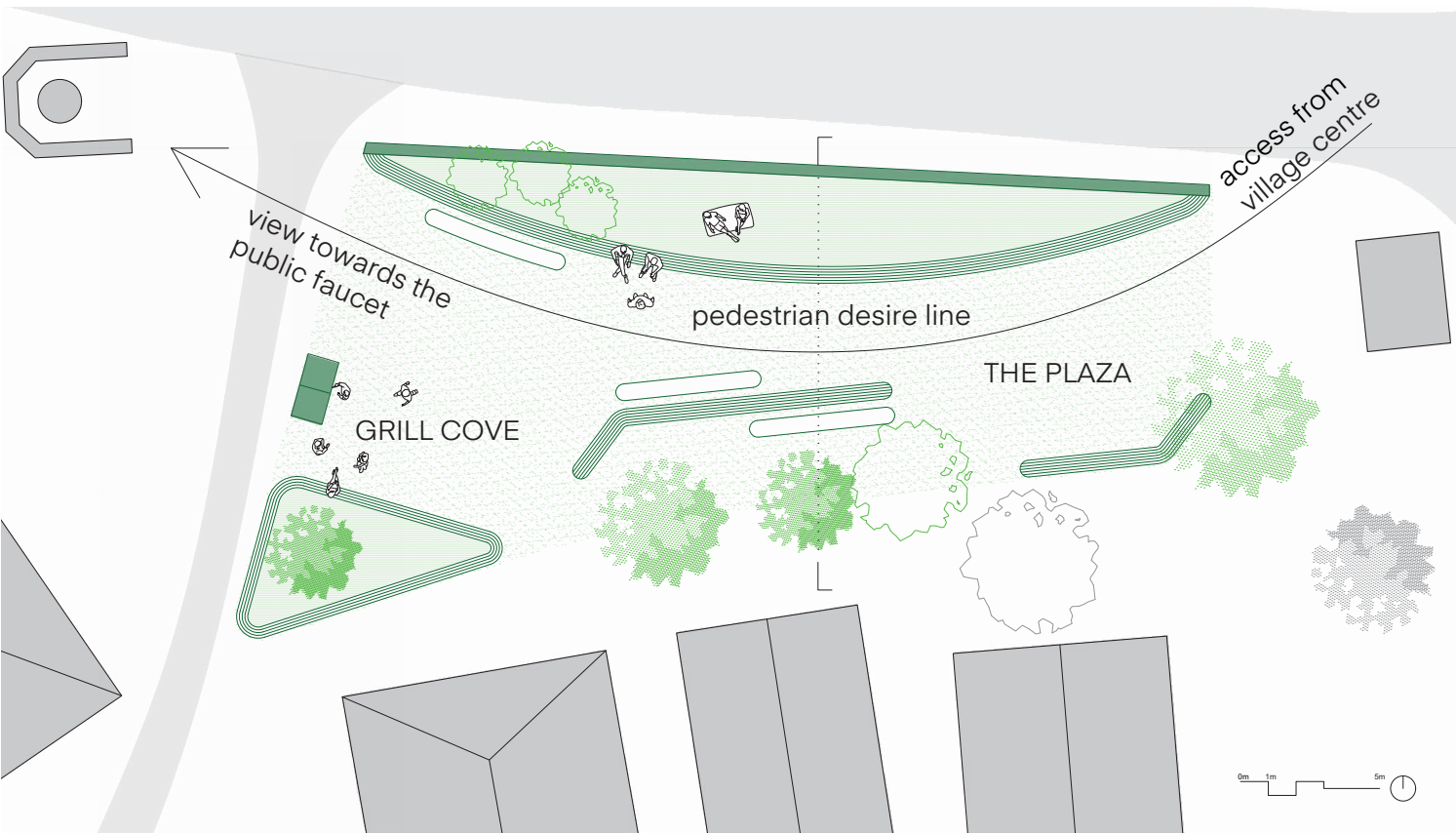
PICTURE 3: Plan of the area with village centre

The concept is to create a car free and inviting pedestrian zone between the public faucet north-west from the location and village centre on the east.

The area consists of two wide open spaces: the grill cove in the west and the plaza in the east. The main feature of the grill cove is as the name says: the grill. It is free to use, whether it be by the hotel or community club for events or for the villagers themselves. The cove is both open and surrounded by benches, so it leaves a lot of space for people gathering in the way they wish. When the grill is not in use, the setting still offers a lot of space to sit down and come together, whether it is to enjoy the sun or the shade of the trees around.

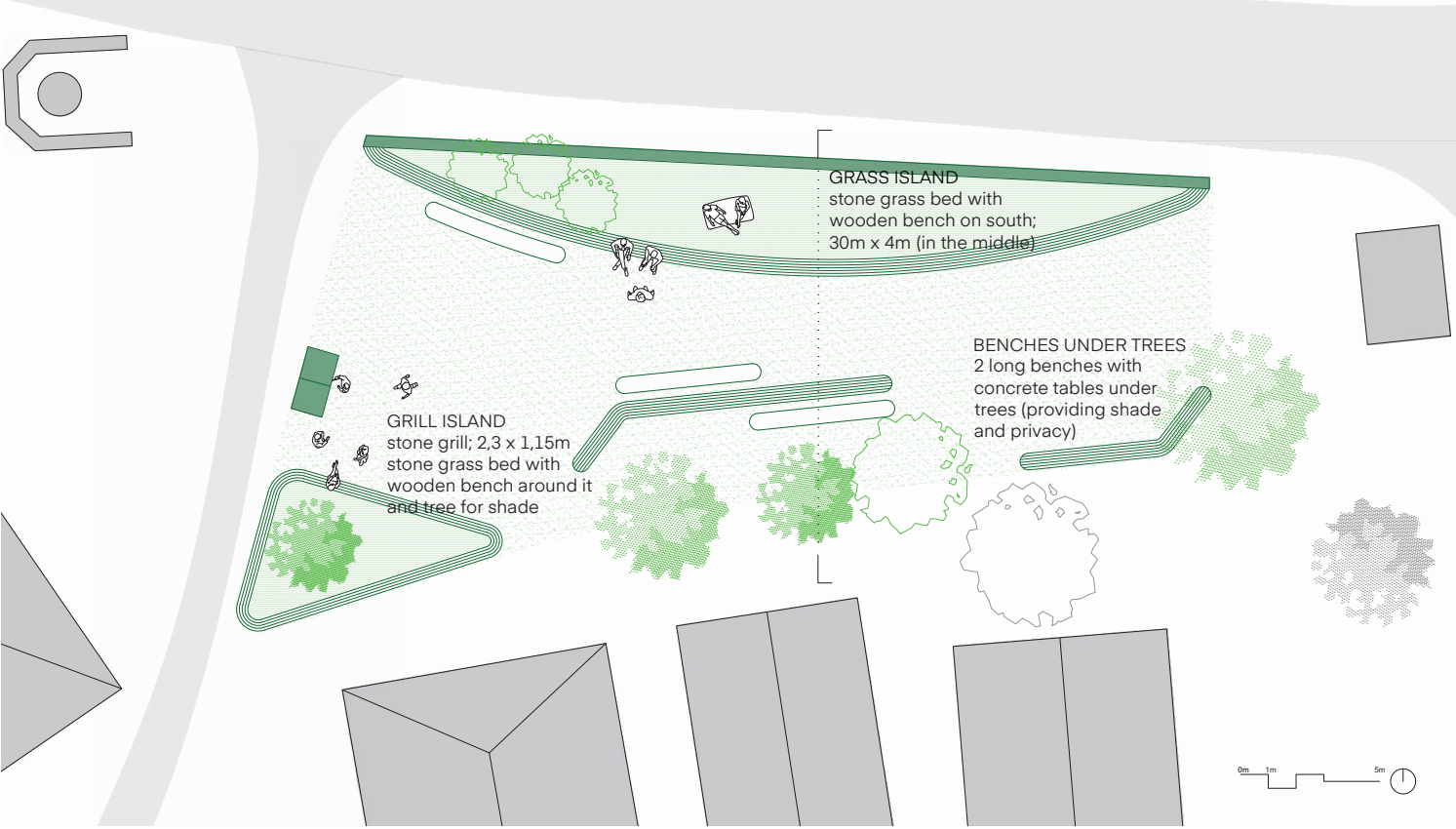
Whereas the grill cove is designed to be an open and busy place, the plaza offers a more cozy and intimate feeling. This is created by the many trees surrounding the plaza and the bench on the south-east corner that close up the square.

The programs are connected by a pedestrian desire line. People moving from west to east, can enter the area at the corners of the northern stone grass island, being offered a walk through the oasis of peace and togetherness instead of a main street in the full sun.



PICTURE 4: Conceptual plan of the area

The Oasis of Peace and Togetherness



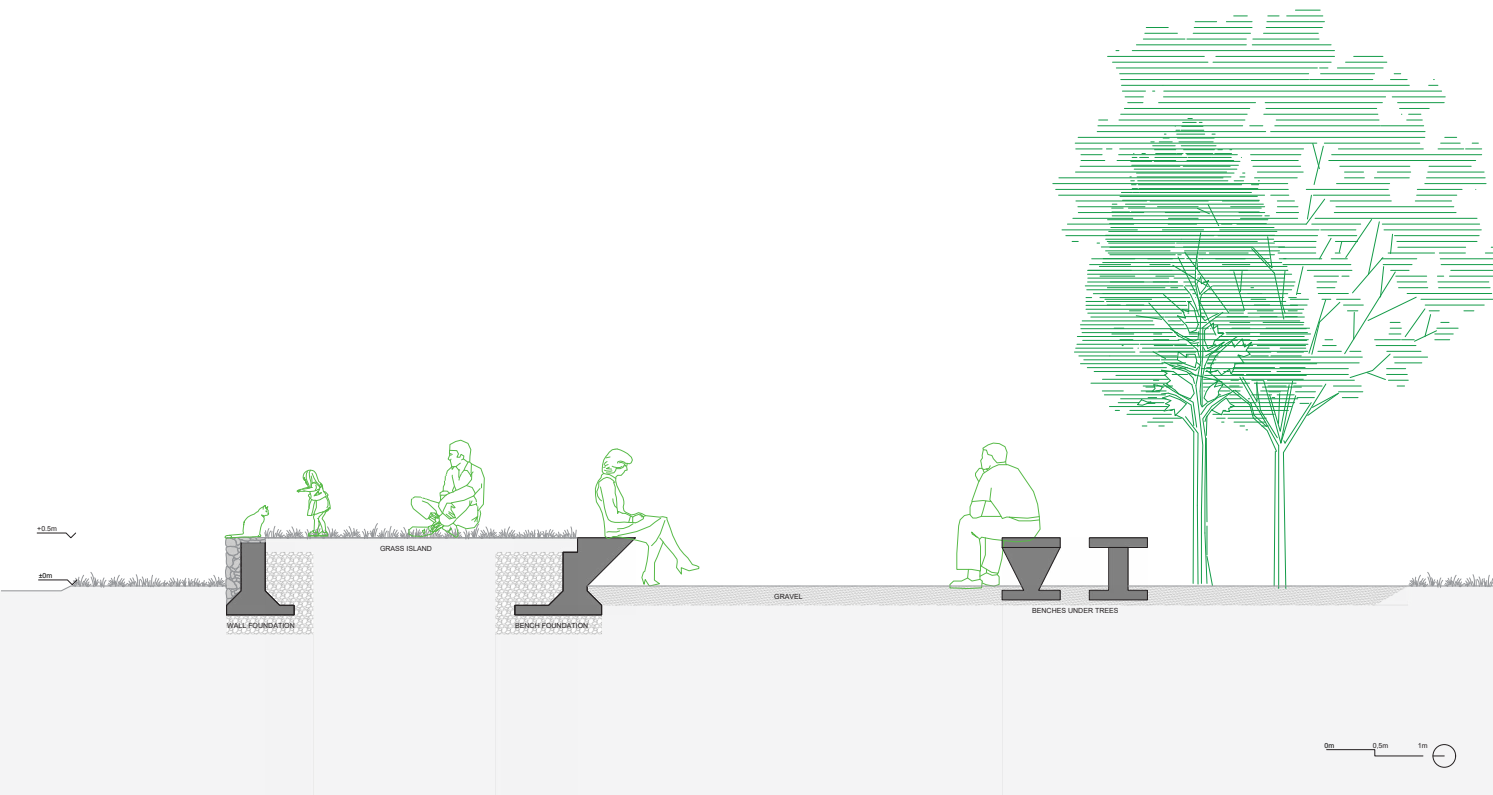
PICTURE 5: Plan with descriptions



PICTURE 7: View from the grill to the site



PICTURE 9: View to the area from bench on south-east corner



PICTURE 11: Cross-section of the site

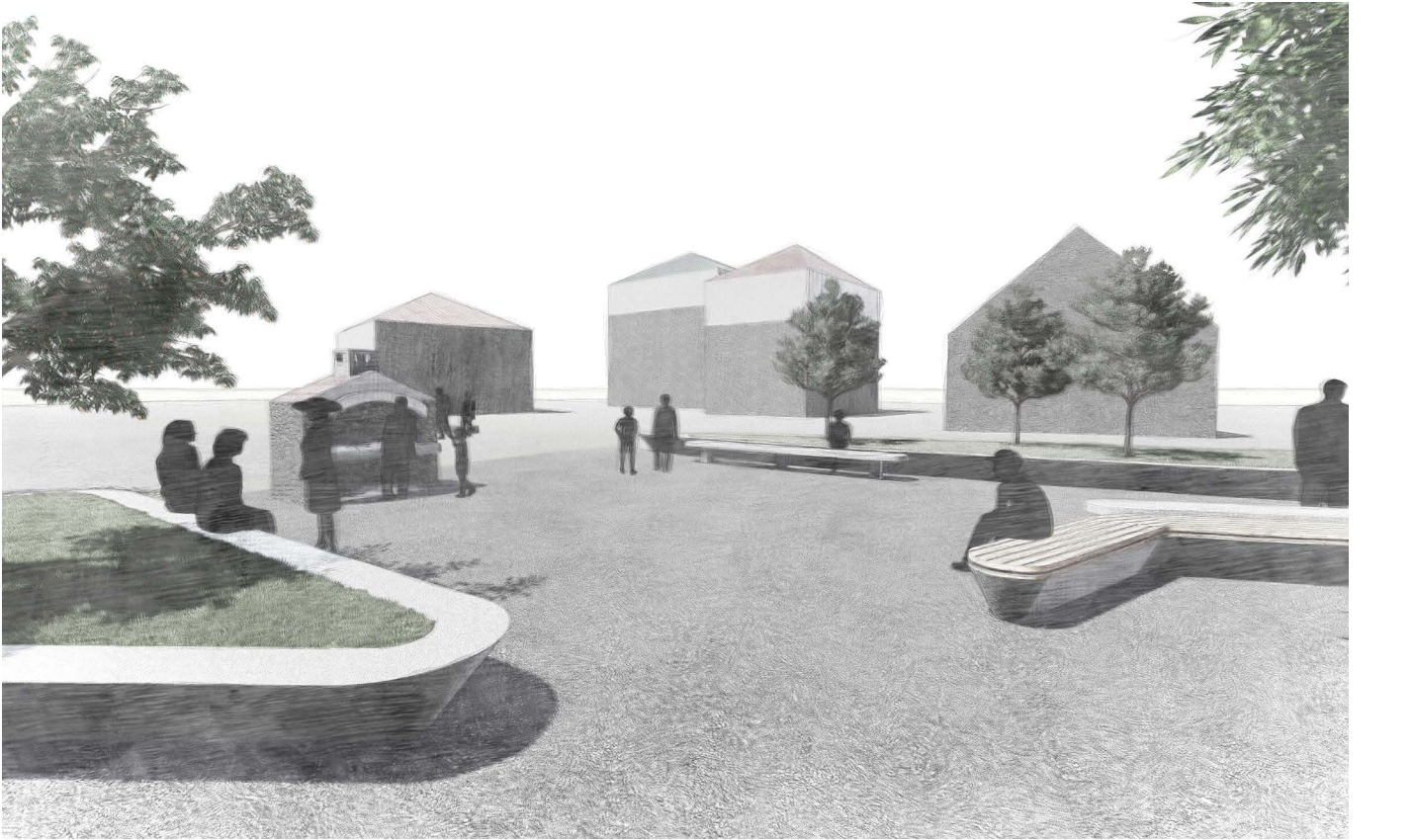
On the north side of the area is a recreational object consisting of a wall on the north side, a bench on the south side and a grass patch in between. The "grass island ensures that cars can't enter the area and also provides sitting area either on grass or bench.

The south side of the area has a tree line planned to ensure privacy to both people living in the houses bordering the area on the south, and the people sitting down on the benches. It also provides shade for benches under them.

The south-west corner is finished with another grass island with bench around it. It provides sitting area near the grill under the tree.



PICTURE 6: View towards benches under trees



PICTURE 8: View towards grill



PICTURE 10: View from the public faucet