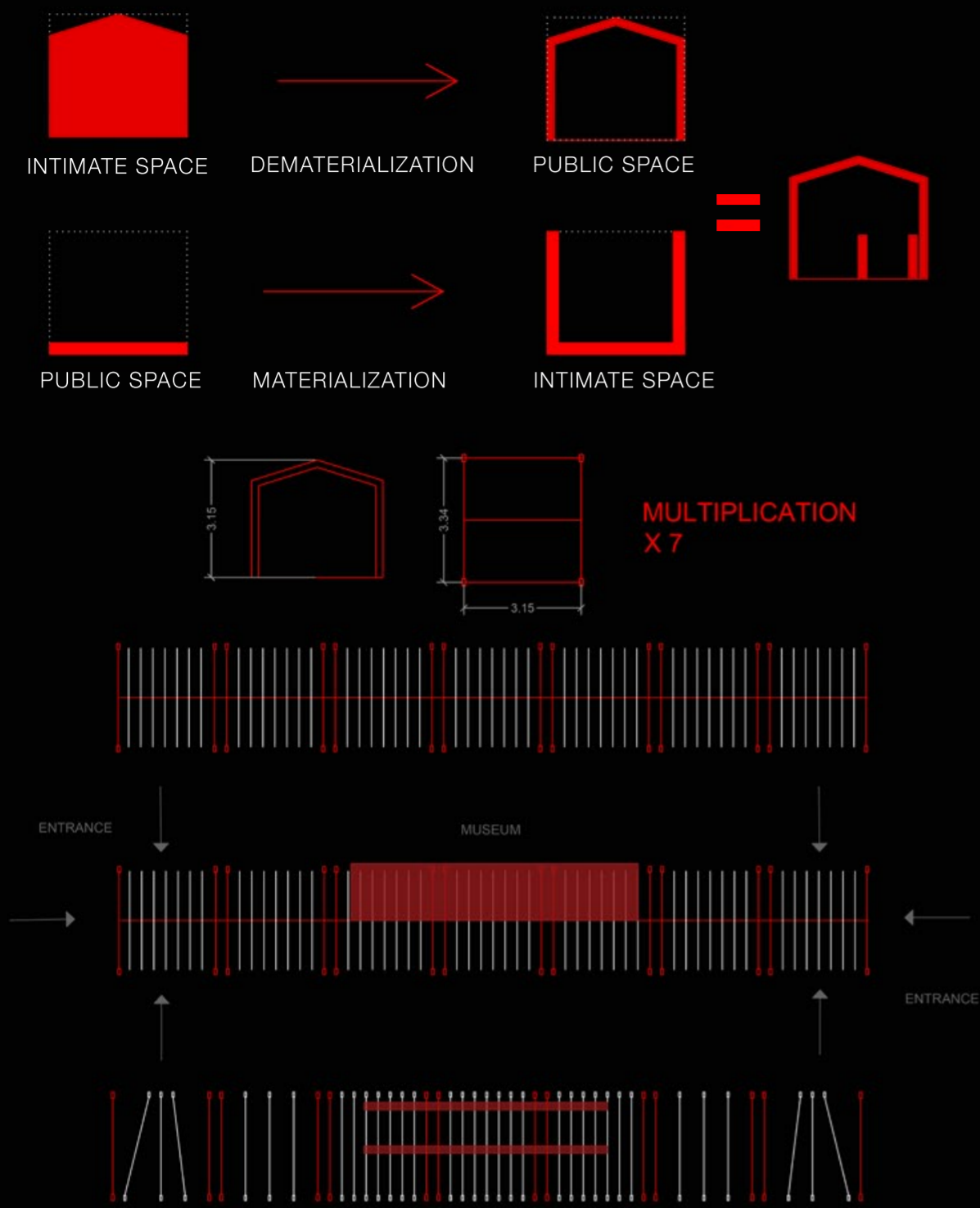


LAZAROPOLE GET TOGETHER PAVILION

A TRADITIONAL COMPLEX AS A TRIGGER FOR RETHINKING OUR UNIVERSAL VALUES

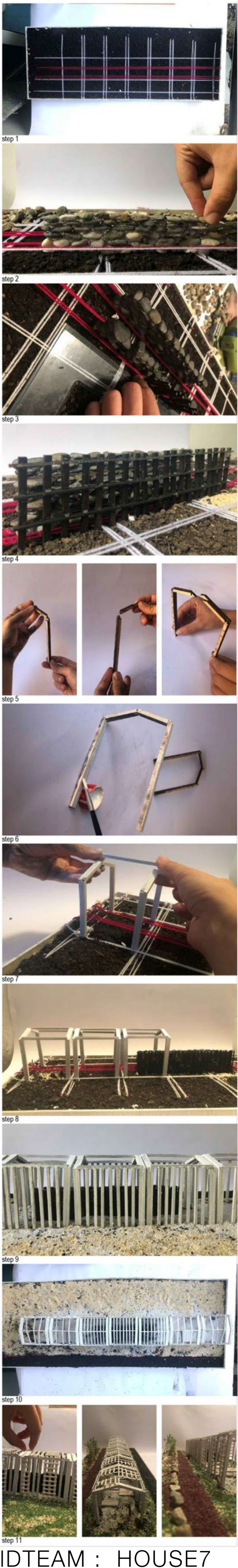
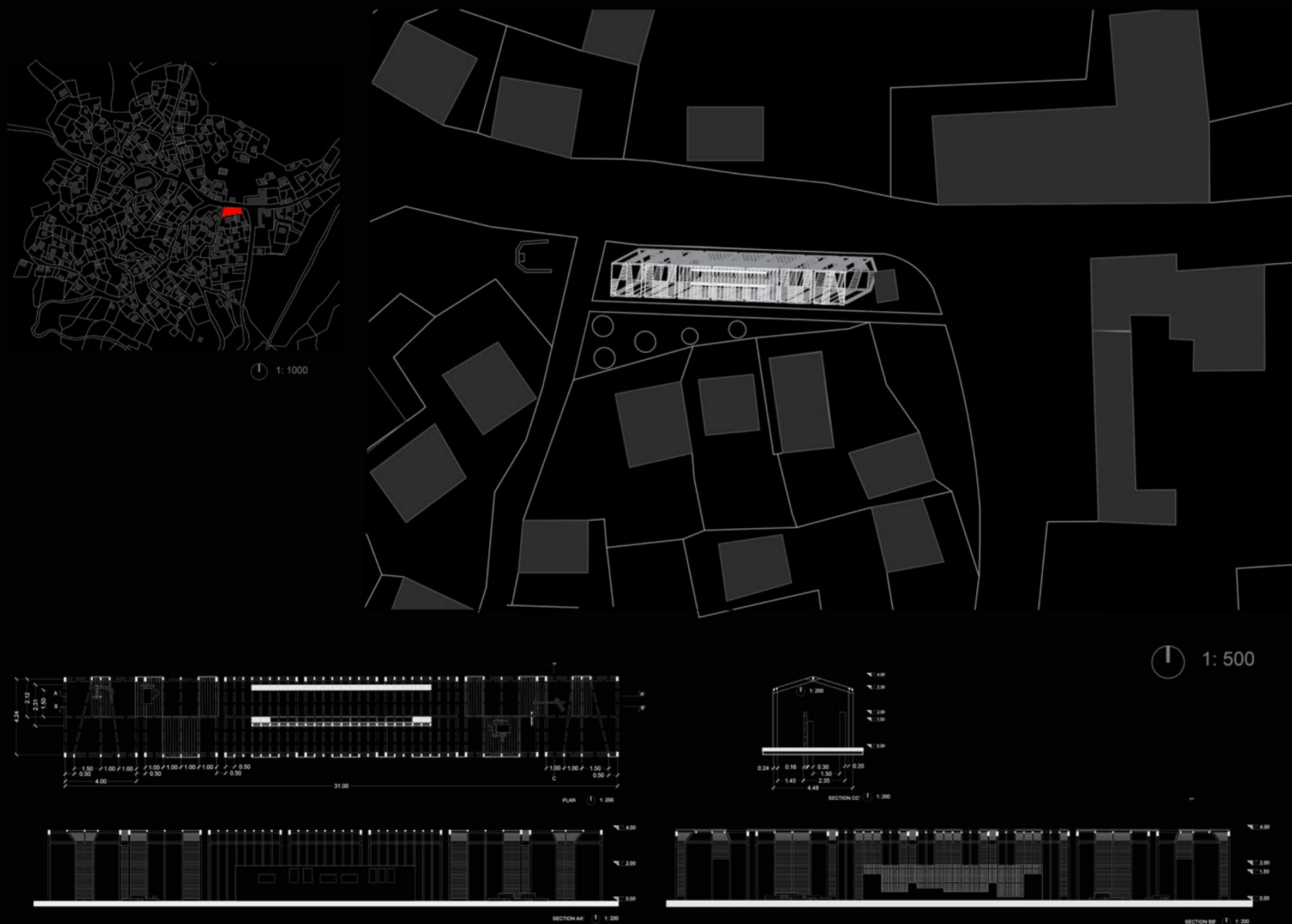


Lazaropole is an entirely displaced village in the Municipality of Mavrovo and Rostuše, located in the Mijačija area, on the slopes of Mount Bistra. Although the site is rich in mountainous nature, the local landscape of houses, as well as their interdistances, do not create natural shading. The pavilion we are intervening with is placed alongside the primary street, just next to the location.

Our common, present-day mindsets are the premise of our research, prompting us to muse upon the openness and the closure of a volume as a space for uniting and disuniting individuals. Subsequently, the pavilion, at a macro level, contains an open structure (skeleton) that integrates the internal volume. The skeleton has a shape of a so-called "mijačka" house - reflecting the tradition, the context, and the environment - representing, itself, a room open for uniting. The internal volume has a function of a closed street, integrated into the whole structure and symbolizing the disintegration of individuals. The dimensions of the street follow the traditional measurement mechanisms: holding a functional character which is 150cm which thus creates an intimate place for a maximum of two people to cross. At a micro level, the uniting structure mirrors our individual openness, while the inner street - the individual paths of cognition, thus getting the function of a mini museum (with a possibility of exhibiting artifacts on the north wall).

In terms of construction, the pavilion is made of local materials which make the object economical and easy to install. The external structure is composed of individual wooden parts (we provide a description of their assemblance in the photos) that create entire structures within each other. The inner part is made of two stone walls, with the north wall being higher (also protecting from winds and snow) and the adjacent wall holds a playful shape, has a dynamic use and provides a point for viewing the exhibition.

The final part of the complex are: the brooches, at a certain interdistance, providing shades during daytime; certain platforms for various uses at the open structure; as well as wooden chairs and tables for the visitors and tourists.



IDTEAM : HOUSE7