

AXONOMETRIC VIEW / CONSTRUCTION + SHELL

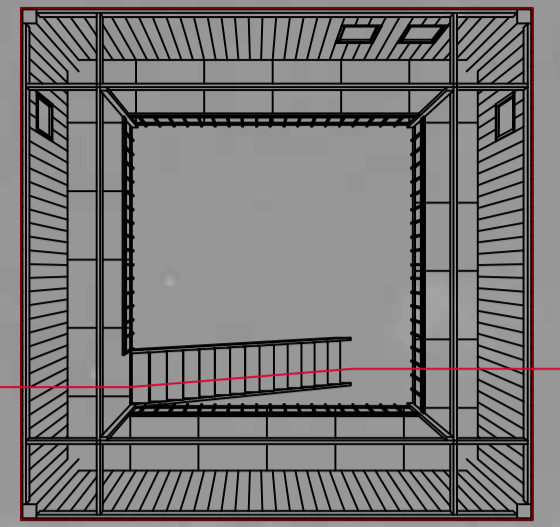
WE ARE AIMING TO CREATE A SINGLE POINT FOR THE GATHERING OF PEOPLE.

THE TYPICAL "LAZAROPLE" HOUSE IS BUILT UP ON A RAISED STONE FOUNDATION WITH MINIMAL OPENINGS FOR WINDOWS. THE FIRST STORY IS USUALLY A WOODEN BALCONY (CHARDAK) OF A CLOSED CHARACTER WITH THE MAIN FOCAL POINT OF THE WINDOW PLACEMENT BEING THE GOOD SIGHTS UNDERLYING THE VILLAGE. THE LOCAL ROOFING CONSISTS OF LOCAL MATERIALS, STRICTLY STONE PLATES. BASED ON A VERY SIMPLE AND EASY TO CREATE CONSTRUCTION SYSTEM, WE ARE FOLLOWING THE LOCAL ARCHITECTURE BUT WITH A TWIST. WE ARE CREATING A NEGATIVE VERSION OF THE TYPICAL HOUSE IN SOME WAY BY FREEING THE GROUND STORY, OPPOSITE OF THE RAISED STONE FOUNDATION WHICH SYMBOLIZES STURDINESS. THE MAIN STRUCTURE IS A WOODEN CONSTRUCTION USED TO BUILD THE LOCAL HOUSES CALLED "BONDRUK". THIS CONSTRUCTION IS A PLYWOOD SHELL WITH VERY FEW PREFACES TO SYMBOLIZE THE LOOK OF THE LOCAL HOUSES.

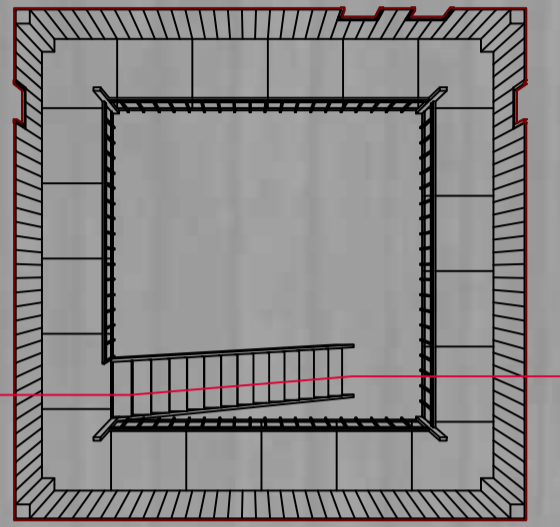
EVERY SINGLE PERSON IS WELCOME TO USE THE PAVILION IN ANY WAY THEY DESIRE. WE HAVEN'T CREATED SOMETHING WITH A DEFINED POINT OF USAGE. THE AREA CAN BE USED FOR A MULTITUDE OF ACTIONS. ONE OF THE WAYS THIS AREA CAN BE USED IS A SITTING AREA, IMPROVISED CINEMA, GATHERING, SOCIALISING, LOOKING AT THE VIEWS THROUGH THE SMALL OPENINGS AIMED AT THE BEST SIGHTS.

THE FREED GROUND FLOOR DOESN'T STAND OUT AND PEOPLE CAN FREELY MOVE THROUGH THE CONSTRUCTION LIKE IT'S NOT THERE.

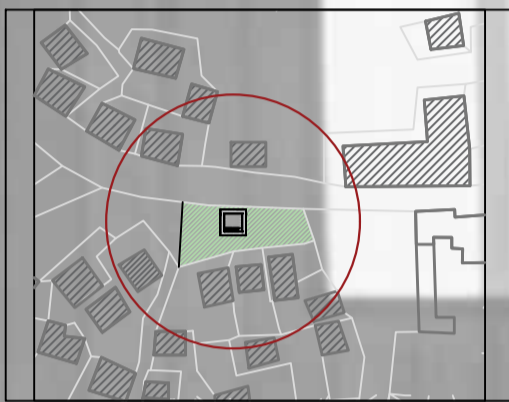
IT CAN BE USED DURING THE DAY AND DURING THE NIGHT.



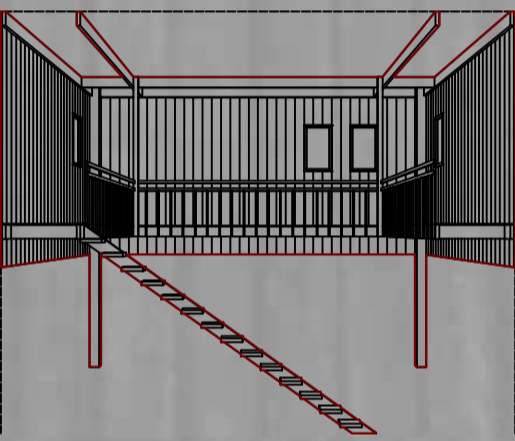
PLAN 6.00 M=1:100



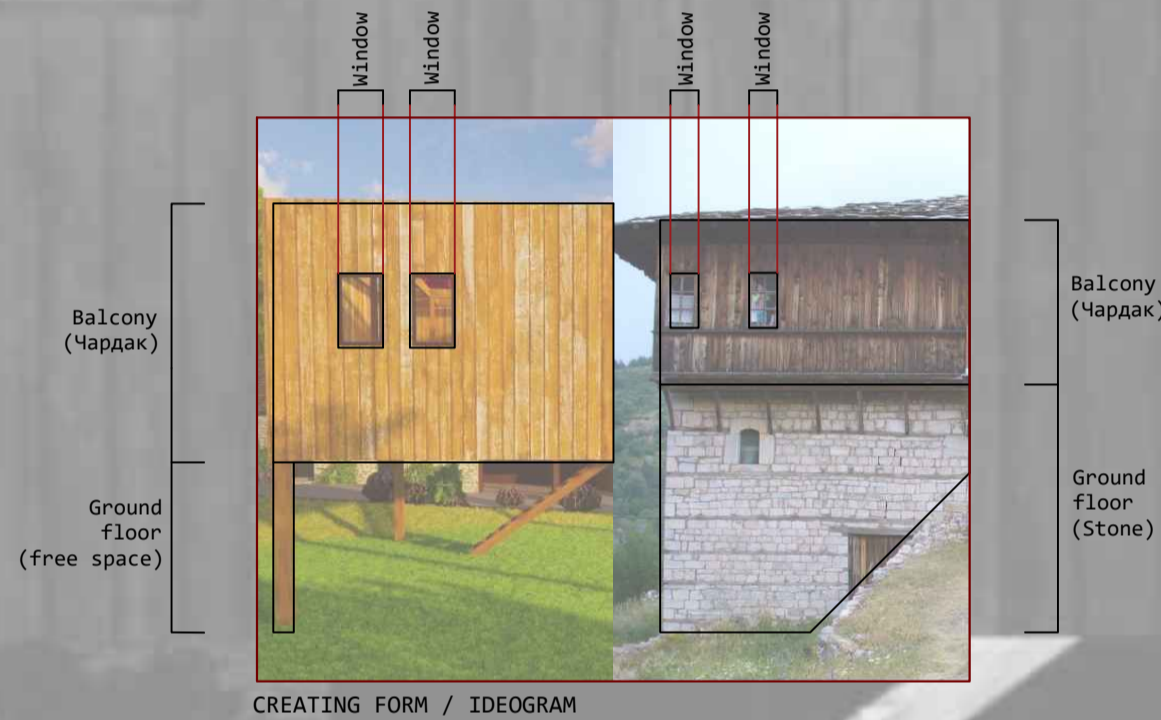
PLAN 3.00 M=1:100



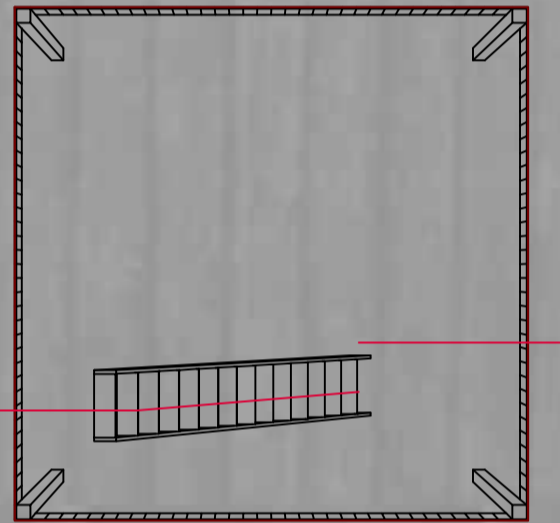
SITUATION M=1:2000



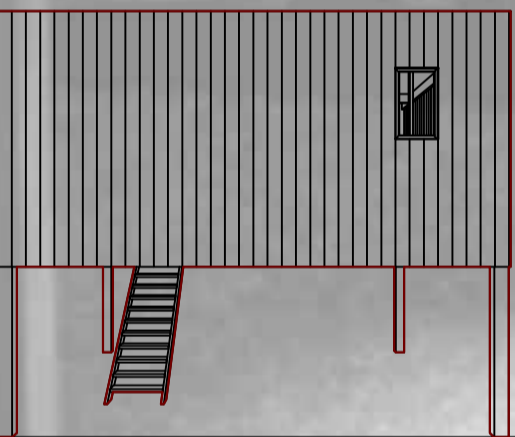
SECTION 1-1 M=1:100



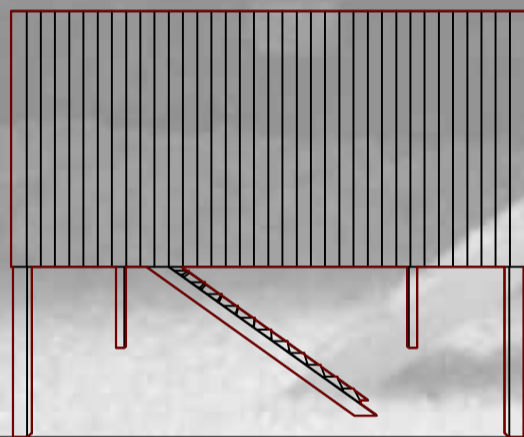
CREATING FORM / IDEOGRAM



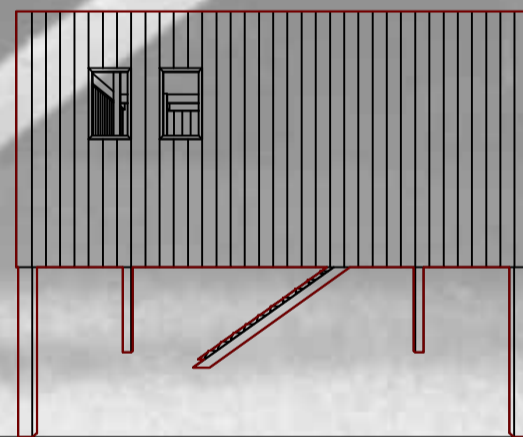
PLAN 0.00 M=1:100



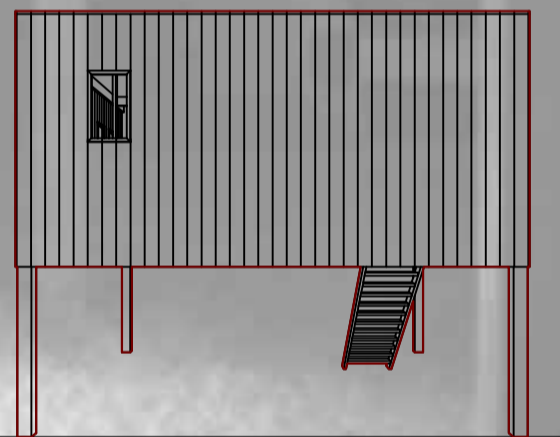
WEST FACE M=1:100



SOUTH FACE M=1:100



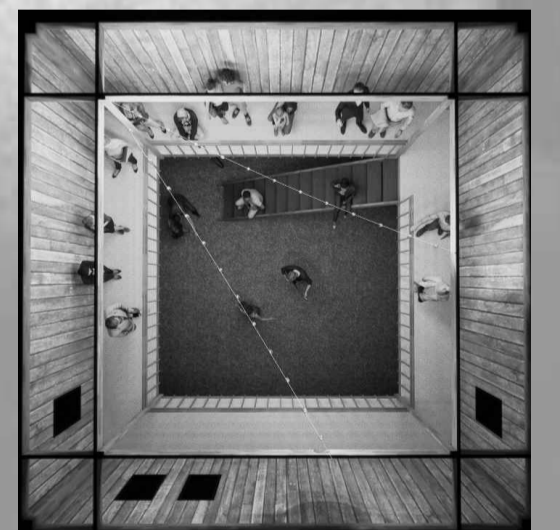
NORTH FACE M=1:100



EAST FACE M=1:100



3D PRESENTATION OF SCENARIO



3D PRESENTATION OF SCENARIO



3D PRESENTATION OF SCENARIO



3D PRESENTATION OF SCENARIO