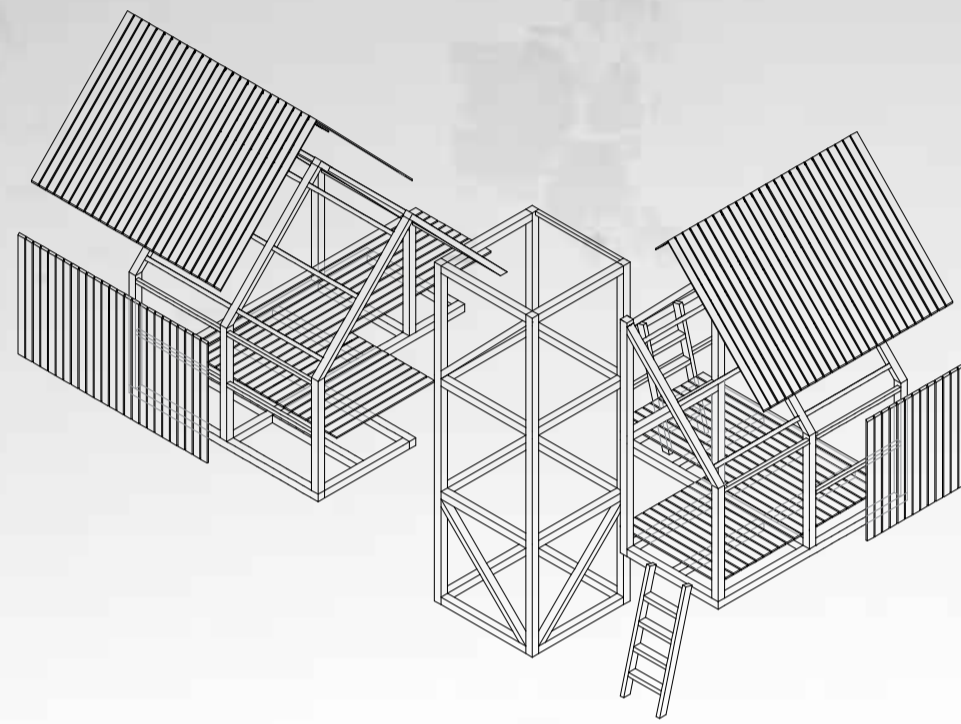




International Competition
HOMAGE TO TOGETHERNESS

Small scale | Low - Tech Architecture
Location: Lazaropole, North Macedonia
Year: 2020

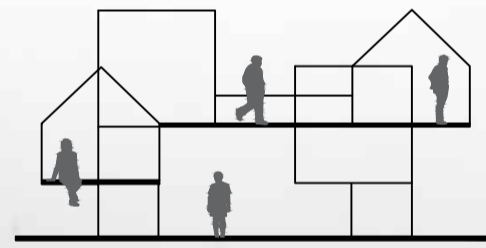
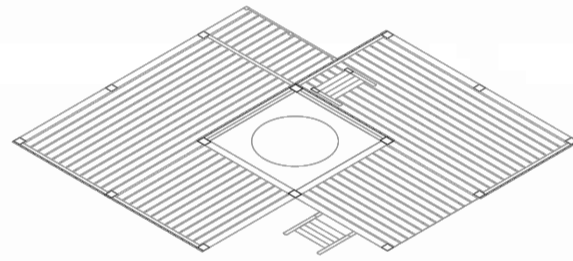
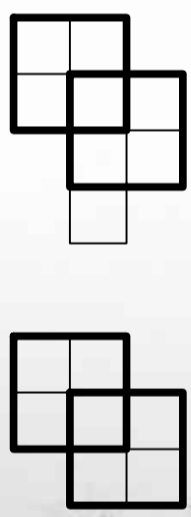
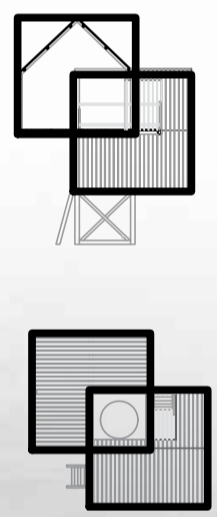


The Covid-19 pandemic changed everyday functioning by imposing sanitarian and disciplinarian measures. This taught us that in such situation what is important is to stay together, support and help each other.

As an architects, we created a design that gives an inverse response to the measures imposed by this pandemic, as a result of our association of togetherness.

The most important role of the architecture is to bring people together, to connect, to establish relationships between social groups in heterogeneous societies through shared values, trust and reciprocity. Architecture can plan the crossing points, remove barriers and make the meeting places useful and attractive.

CONCEPT



PLAN TO SECTION

TWO "PERFECT" SQUARES 3.00m x 3.00m
DIVIDED INTO 1.50m x 1.50m SQUARES

CONCEPT WHICH PROVIDES MAXIMUM INTEGRATION
BETWEEN INTERIOR AND EXTERIOR SPACE CREATING AN
EXPERIENCE OF A DIFFERENT ATMOSPHERES

In relation of our association of togetherness, we designed a project which is consisted by single type "tree house" multiplied six times, connected with bridges. The project incorporates unprogrammed spaces, while also creating surprising connections between the different functions of the houses. This design allows for people of all ages and with diverse interests to use the "houses" simultaneously while re-programming them according to their needs. The two wooden houses overlap one another as they stack up around a tree and ladders connect each floor to the one above.

Designed in wood, these houses are creating visual transparency and spatial fluidity.





ELEVATION

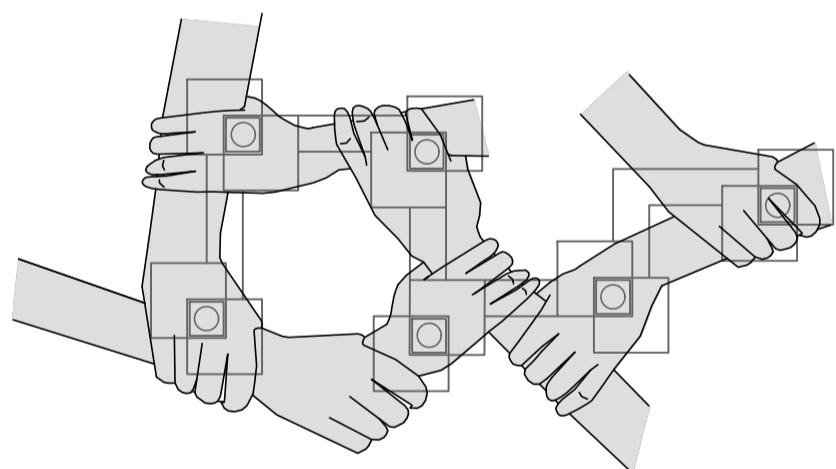


INSPIRATION

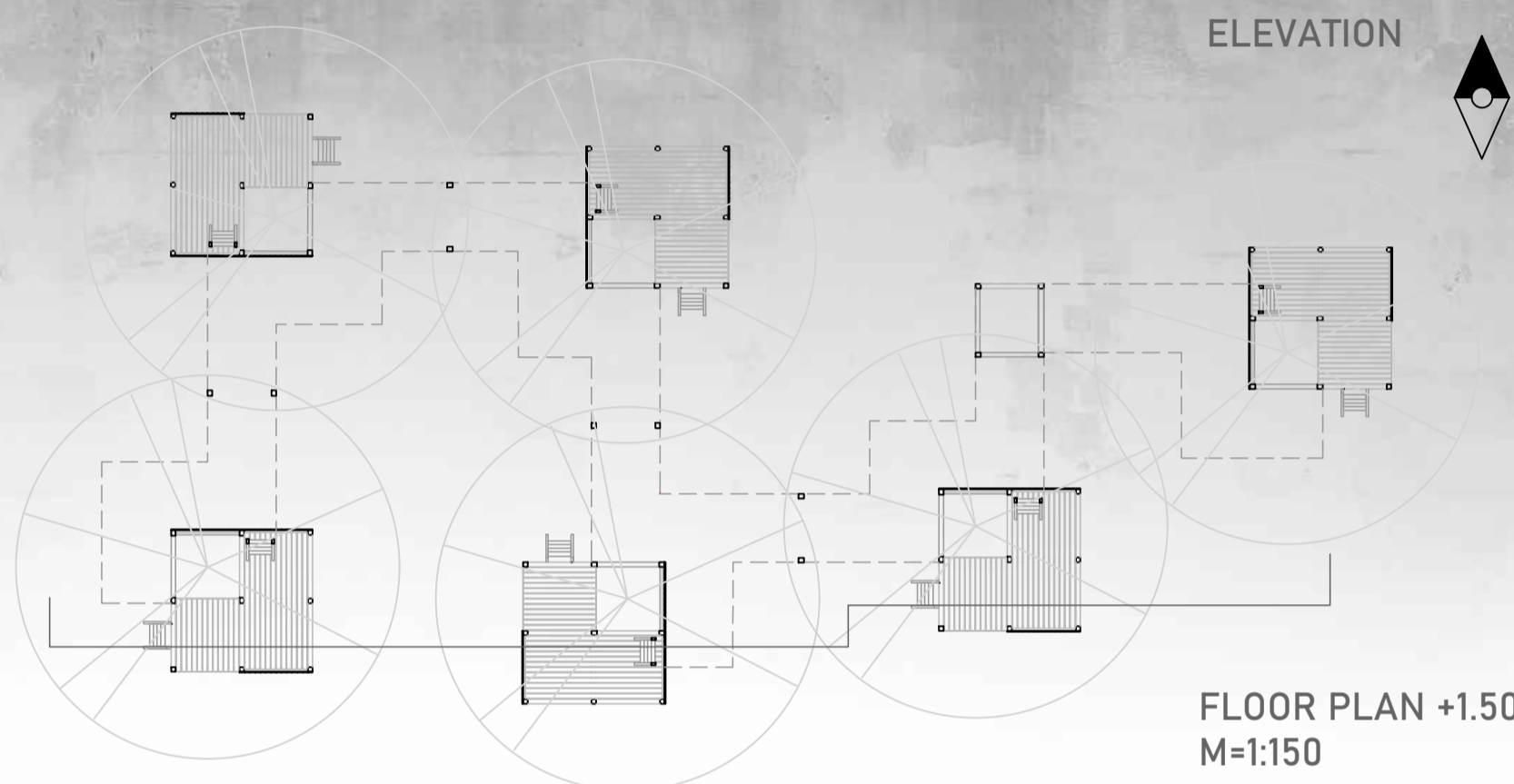


Contrafilé and Campus in Camps ,The Tree School- Bahia , Brazil,2014

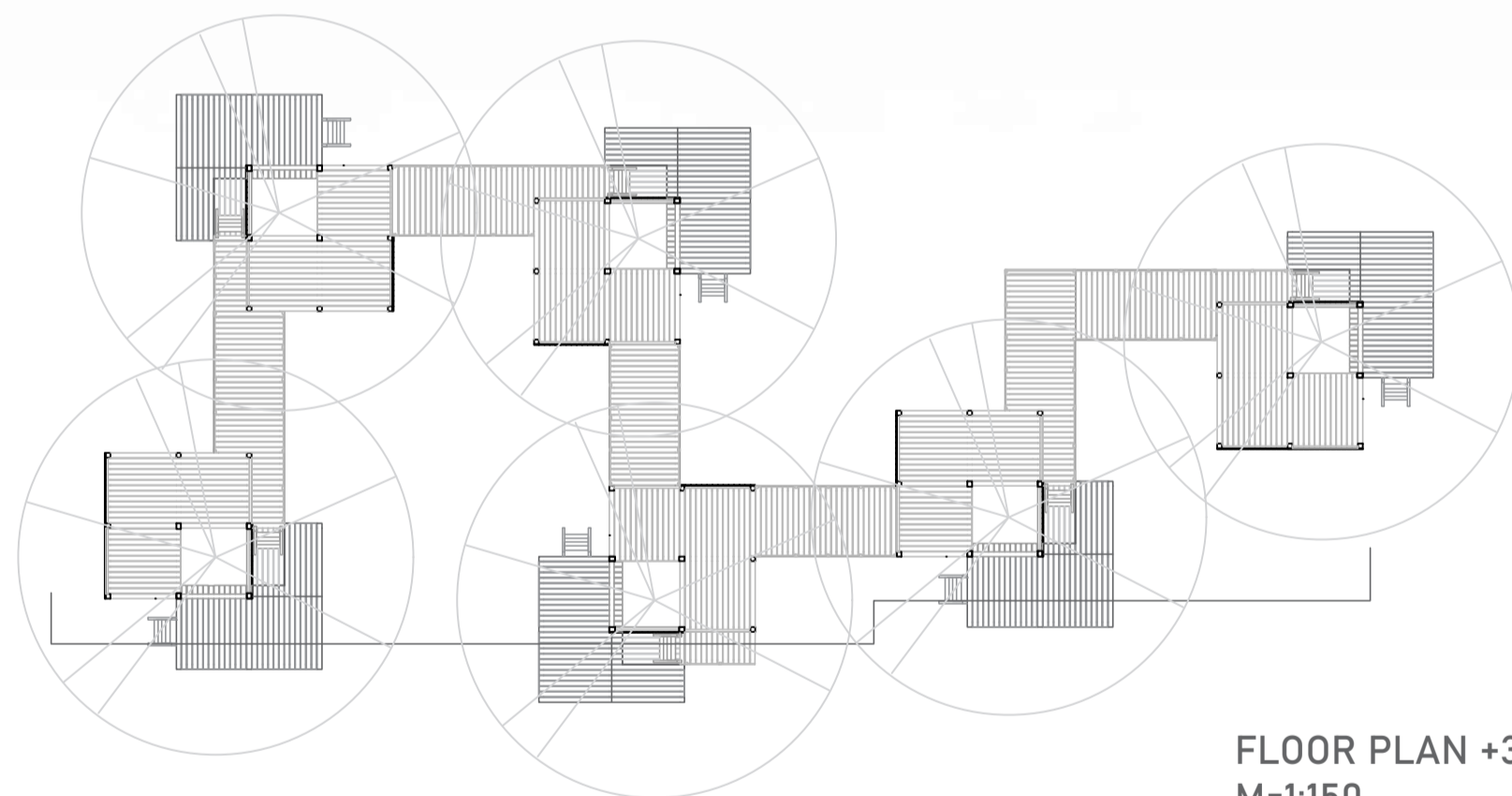
We were inspired by this illustration from the Initiative „ Atlas of Togetherness,, which represents the relationship with nature, the tree as an important element which gathers us together while creating good enviroment for everyone.



„ When "I" replaced with "We" even the illness becomes wellness. „ - Malcolm X

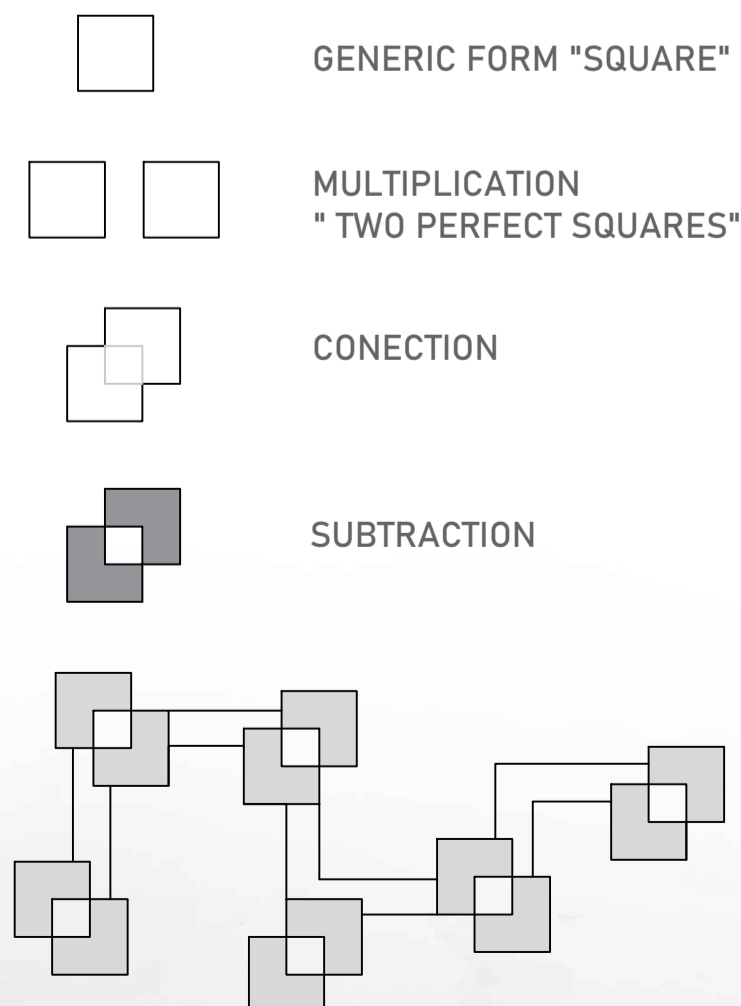


FLOOR PLAN +1.50
M=1:150



FLOOR PLAN +3.00
M=1:150

DEFINING A FORM



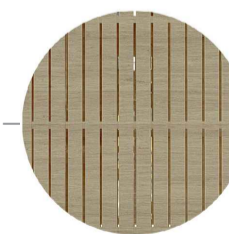
SPECIFIC FORM MULTIPLIED SIX TIMES
 CONNECTED TO EACH OTHER WITH BRIDGES



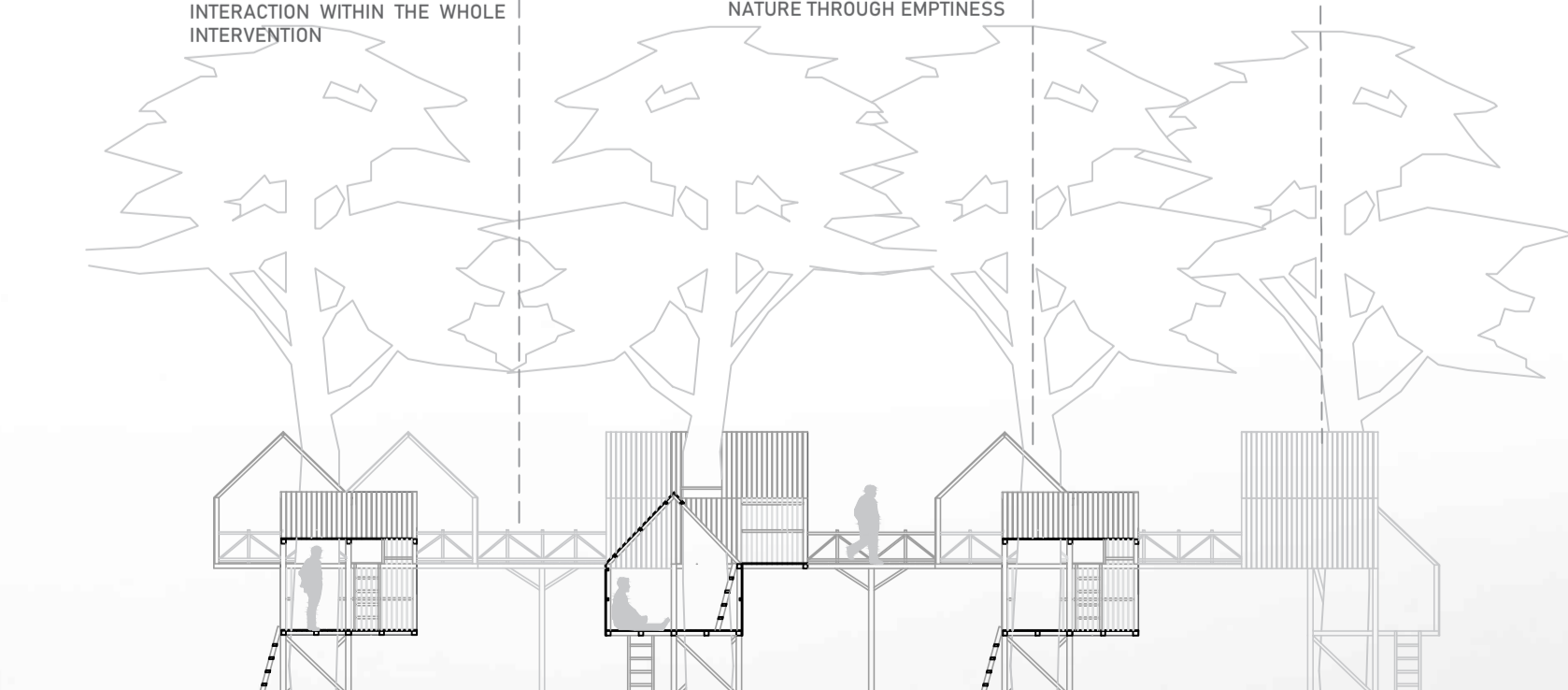
ALL VOLUMES ARE CONECTED WITH BRIDGES TO ENABLE PROGRAMATIC AND SOCIAL INTERACTION WITHIN THE WHOLE INTERVENTION



CONTRIBUTED VISUAL AND SPATIAL CONECTION WITH NATURE THROUGH EMPTINESS



USING WOOD AS A PRIMARY MATERIAL WHICH IS EASILY AVAILABLE, REDUCING THE COST OF CONSTRUCTION



SECTION
M=1:150

