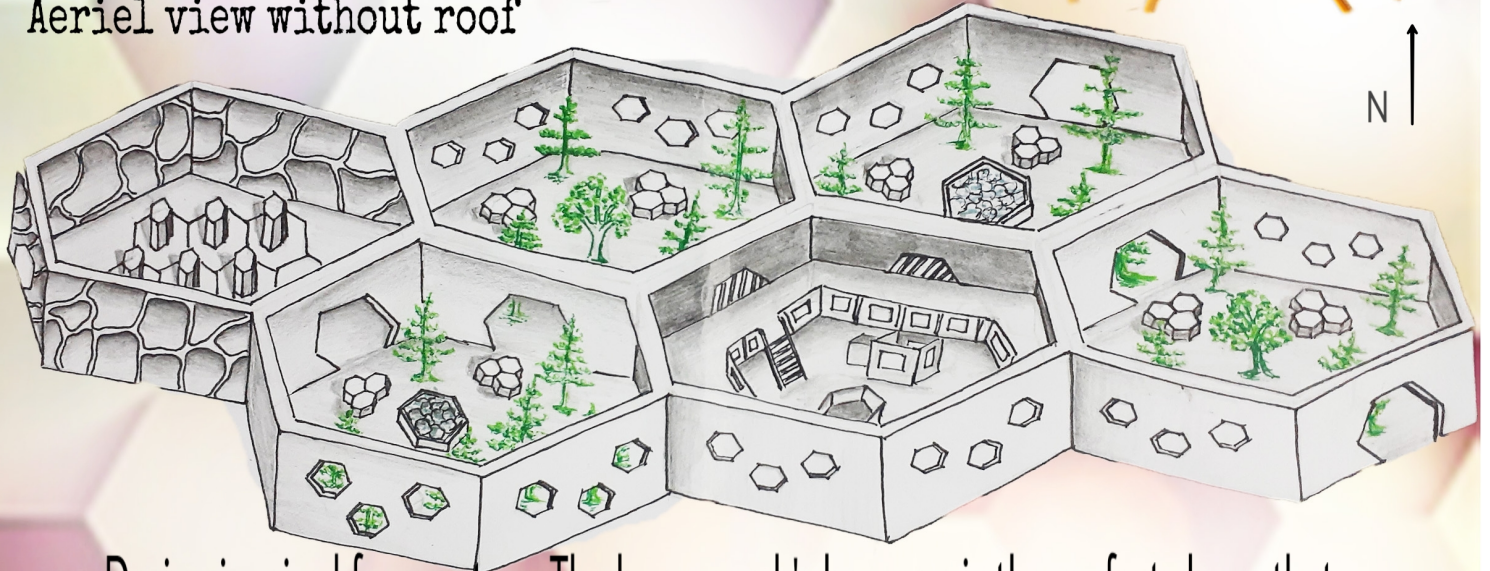


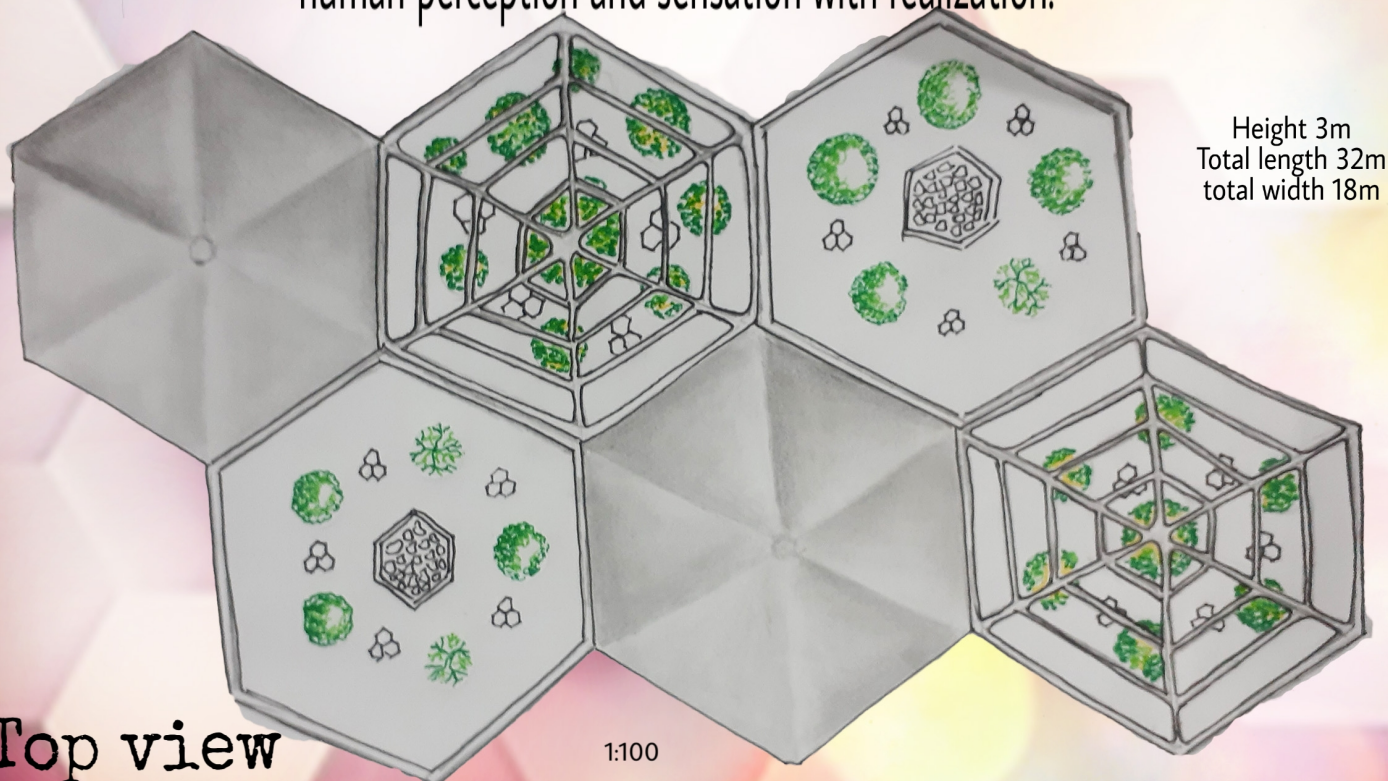
# BEE SUITE



Aerial view without roof



Design inspired from nature. The honeycomb's hexagon is the perfect shape that holds together in strength and efficiency as well as represents unity and communality. The different, unique spatial patterns with varying sun shade and closures triggers human perception and sensation with realization.



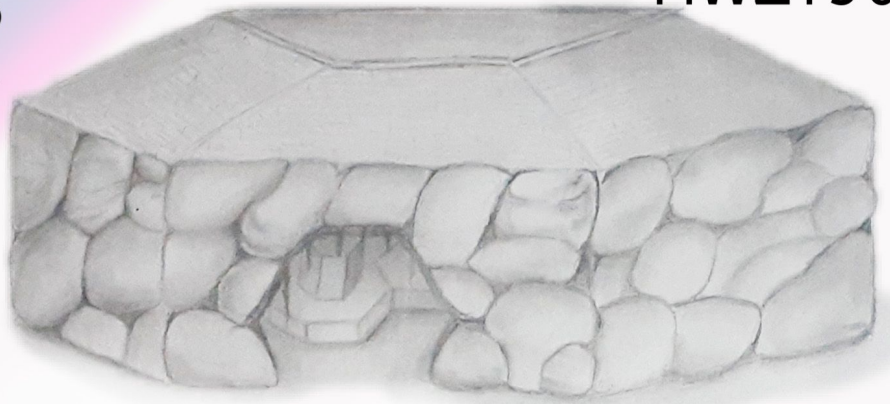
Height 3m  
Total length 32m  
total width 18m

Top view

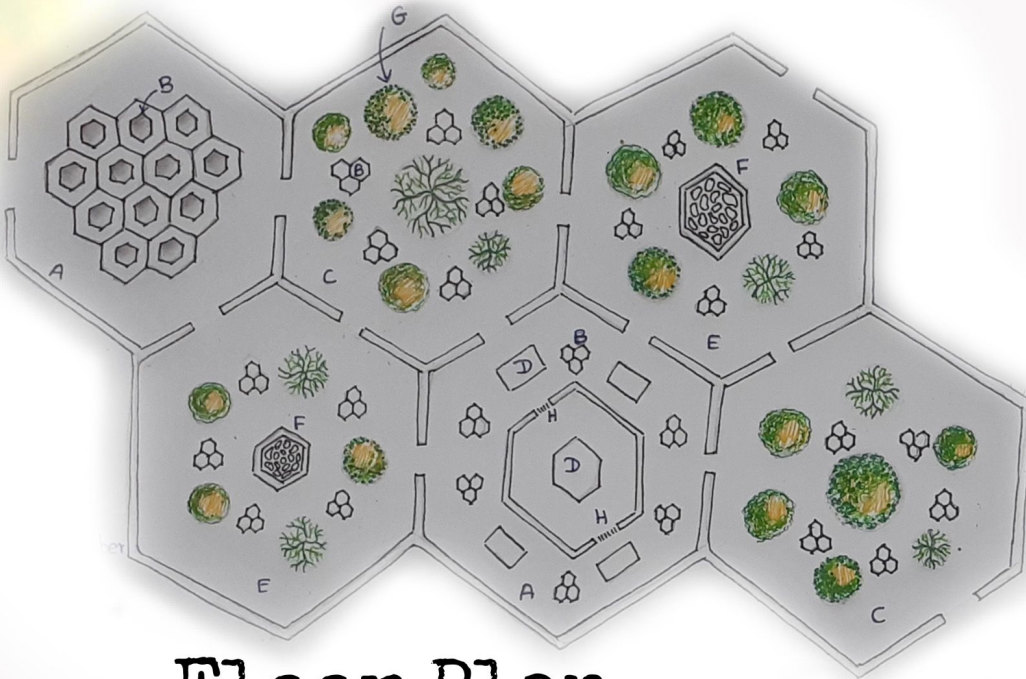
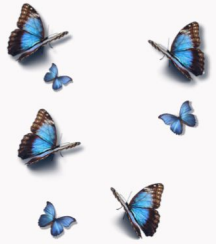
1:100

Local materials (wood, rock, earthen wood and plaster) are indigenous design aesthetic and can be more durable in the local climate and also supports local economies and reduces the environmental impacts of transportation.

Cave like entrance depicts the past history of Lazaropole. Lazar who survived by escaping through the cave is the originator of this picturesque settlement.



Entrance cave



- A- closed chamber
- B- seatings
- C- pergolated roof chamber
- D- play area
- E- open roofed chamber
- F- fountain
- G- plantation
- H- stairs

Floor Plan

Open rooftop chamber

The design theme of configuration implies interrelationships between individual arranged elements which can be the pattern of interactions and negotiation.



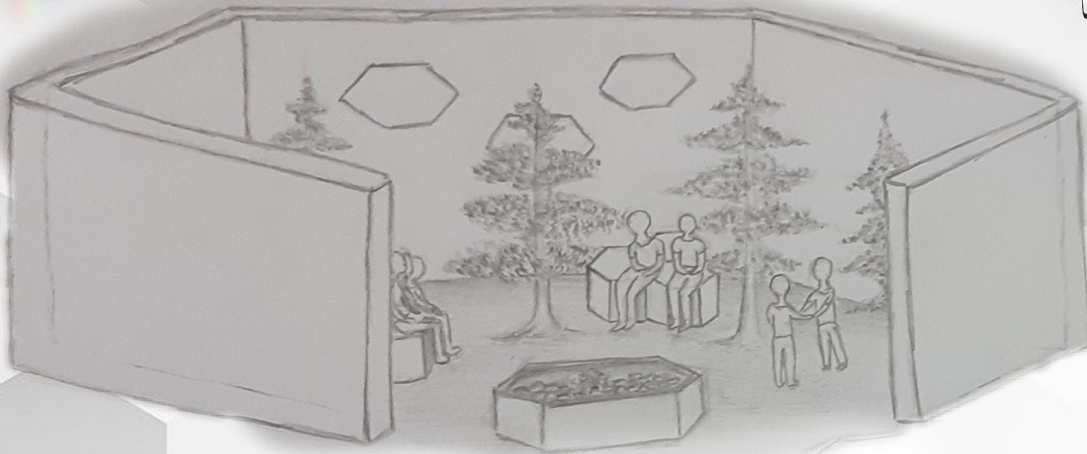
1:100





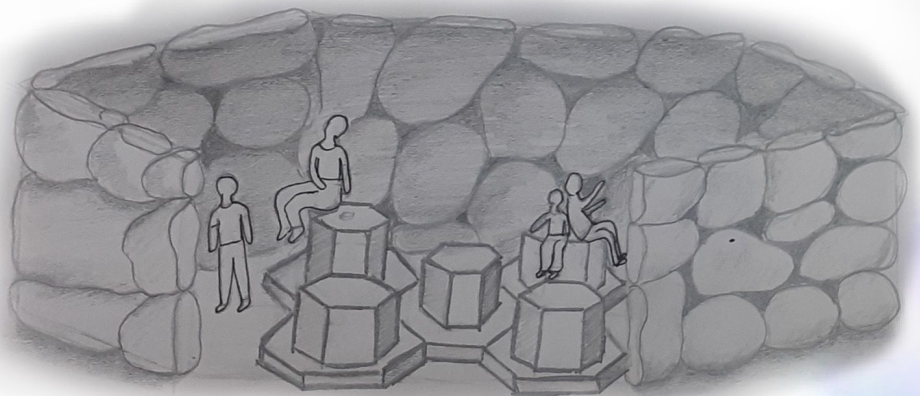
interior of other chambers

Together is a wonderful place to be...



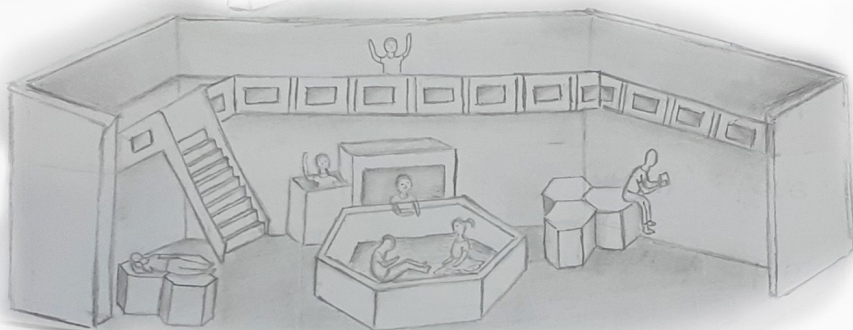
## Activities for togetherness

1. Recreational spaces
2. Play area
3. Community spaces
4. Space for relaxation
5. leisure place
6. Bandstand area



interior space of cave chamber

The material itself and the construction method exposes the vernacular tradition in lazaropole



Play area for kids

The idea of sequential chambers evolved from the chardak design of the existing settlement which allows the user to experience the togetherness.