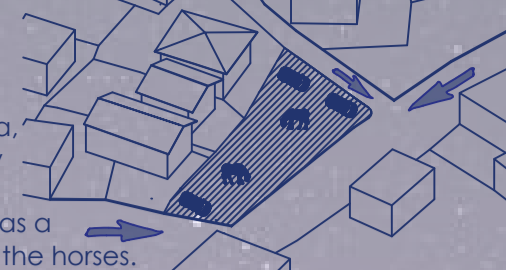


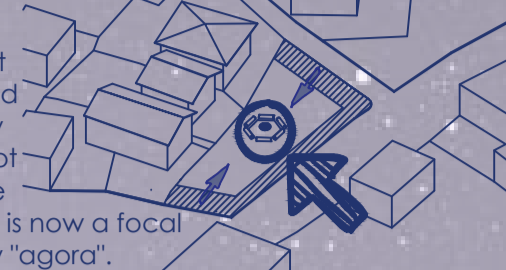
Current state

The flat terrain provides easy access to the large green area, which is used by the locals as a parking spot, or as a grazing land for the horses.



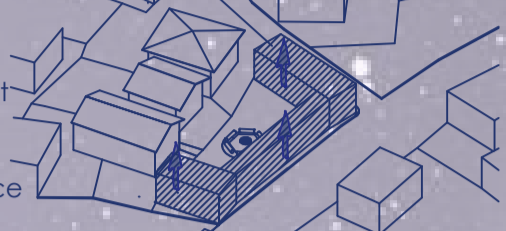
Phase 1

Creating a new core in the heart of the village and surrounding it by offsetting the plot margins. The "fire of togetherness" is now a focal point of the new "agora".



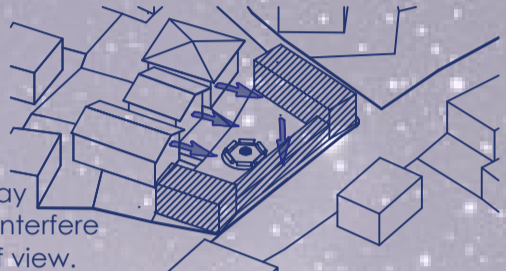
Phase 2

Adding volume to the edges - the starting point of creating a structure that defines the space in-between.



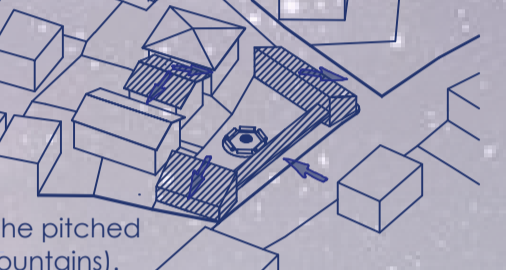
Phase 3

Decreasing the volume of the element that is situated parallel to the existing structure, in a way that it does not interfere with their field of view.



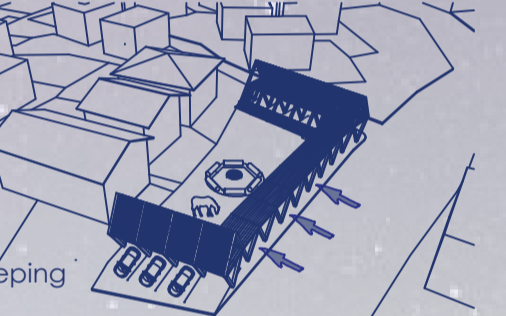
Phase 4

Subtracting volume - generating a portal to the core. Tilting the edges to relate to the context (the pitched roofs and the mountains).

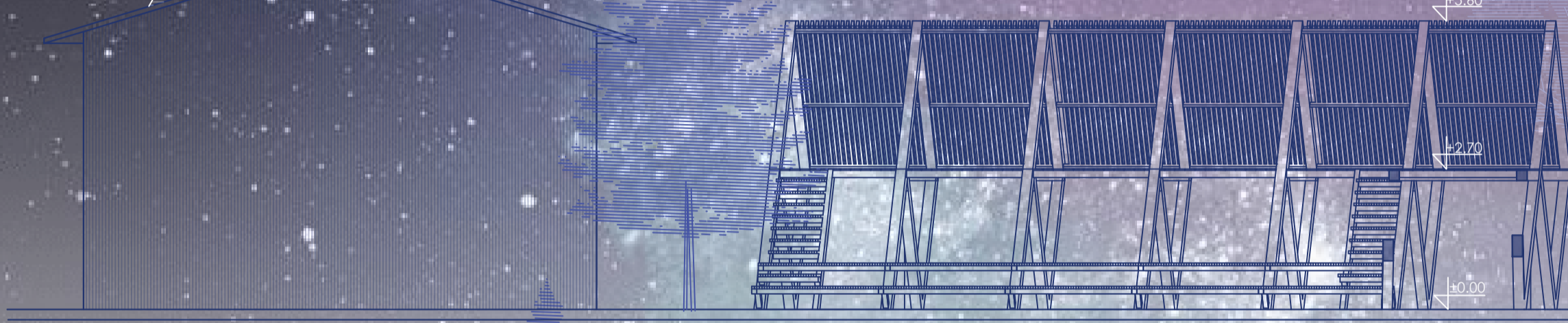


Phase 5

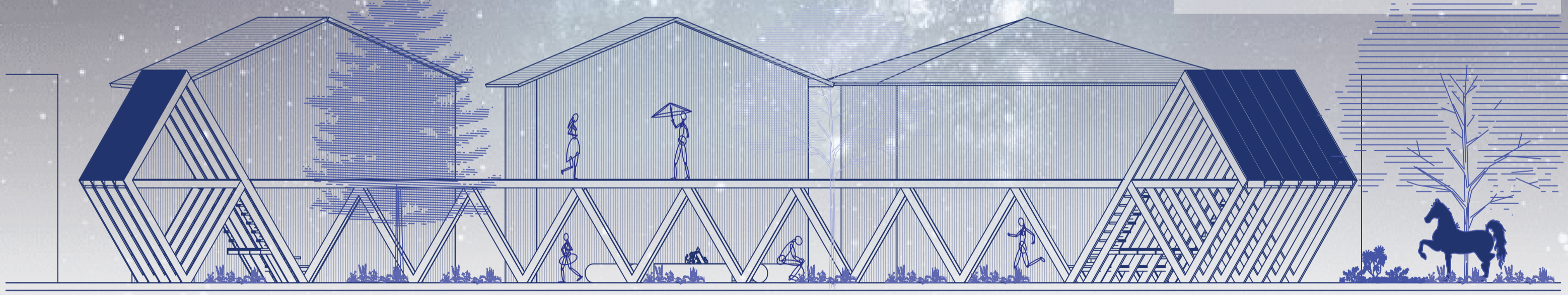
Adding elements of structure as a final step to creating a new gathering space, while keeping its original use.



Plan on ground level Scale: 1:200



Section 1 - 1 Scale: 1:100



Southern facade Scale: 1:100



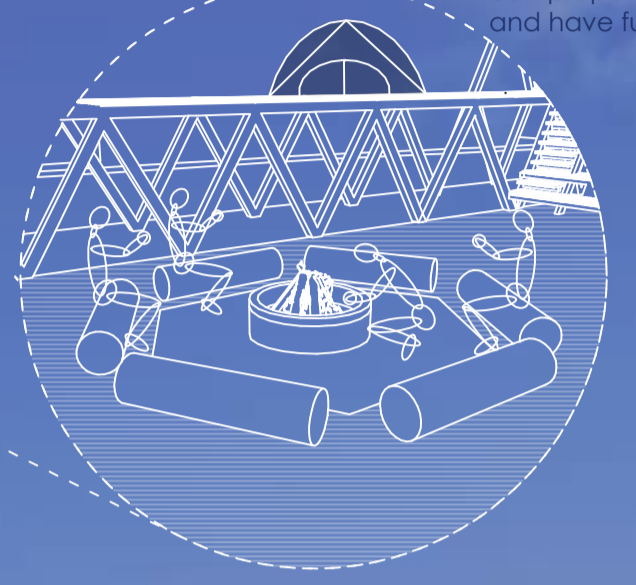
Northern facade Scale: 1:100



Camping - a place where people can stay outdoors, sleep under the stars and enjoy nature in a safe environment.



Bonfire - where campers or locals can prepare a meal and have fun.

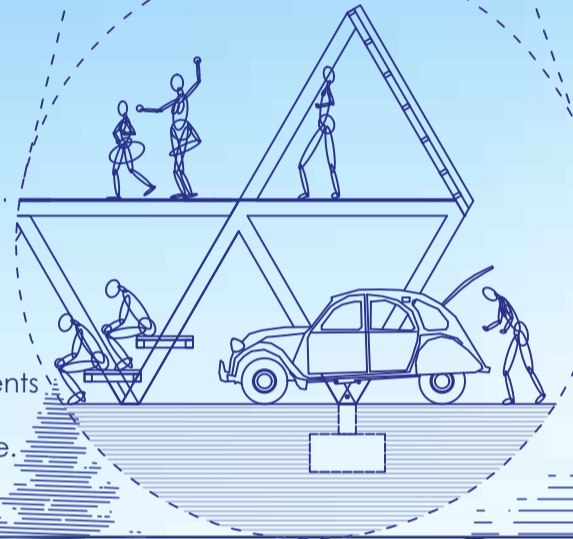


Sparkling in togetherness

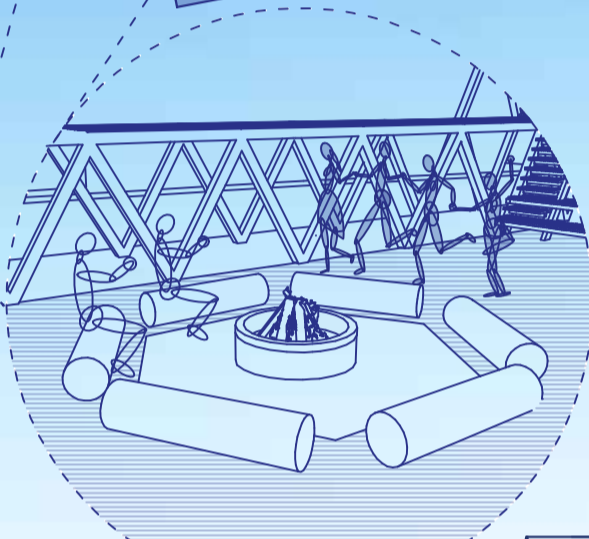
The first discovery of the earliest times, the element that provides heat and light, the place where the whole family gathers around on a holiday, a concept of togetherness - fireplace. It stands in the heart of Lazaropole, just like the Earth's core. Like a magnifying field that gives life to a piece of land. Or as we architects like to call it - a multifunctional space. Here one can experience the festive energy of a village fare, or enjoy the performance of a talented musician, or even join a group of campers around the bonfire, all under the sky full of stars. The wooden structure is inspired by the natural environment and it is assembled in a way that it stands along with it. You can see the mountains, feel the breeze, hear the sounds of nature, all while being "inside". The topography of the terrain also plays an important role. Considering the flat surface of the given location, the locals from the hills can see the sparks of the fire from afar and come down to be part of the event. To be part of the big family, coming together in Lazaropole.

Plan on level 2.70
Scale: 1:200

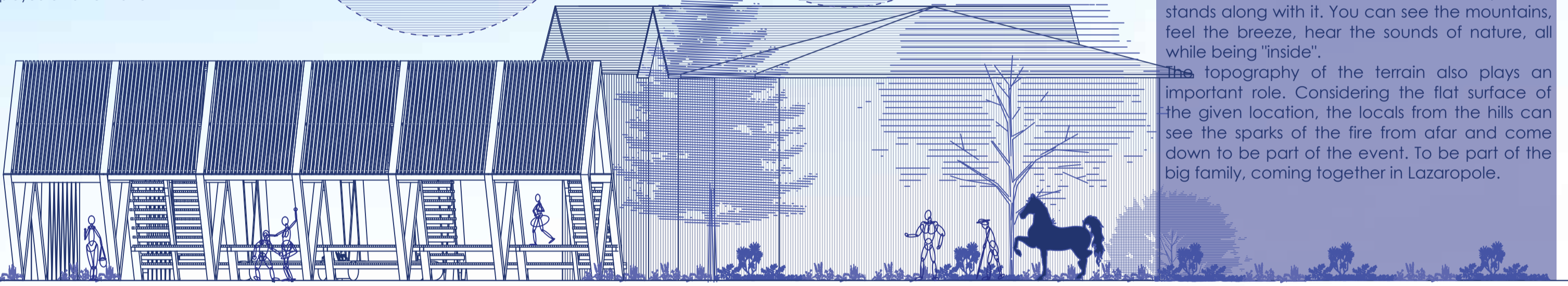
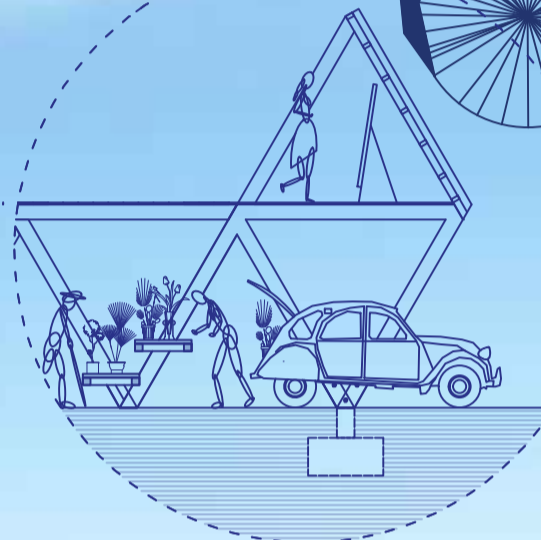
Auditorium - a place where people gather to attend a cultural event.



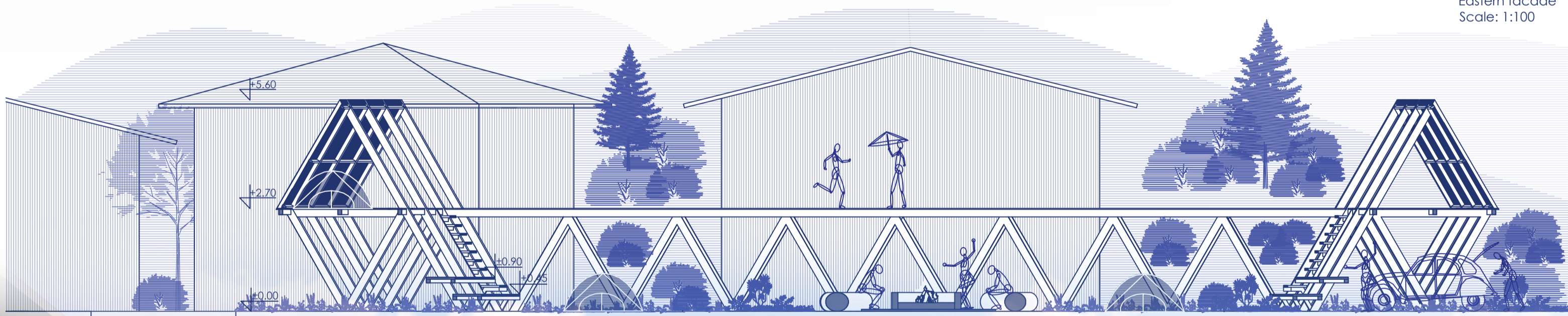
Traditional dance - celebrating special moments and uniting around the fire.



Stall - a place for selling / buying goods
Exhibition - a place where one can admire artworks and various projects displayed on an exhibition



Eastern facade
Scale: 1:100



Section 2 - 2
Scale: 1:100



