

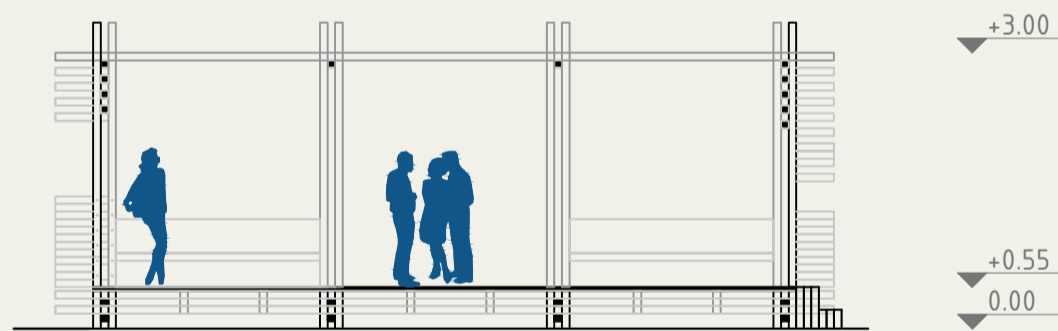
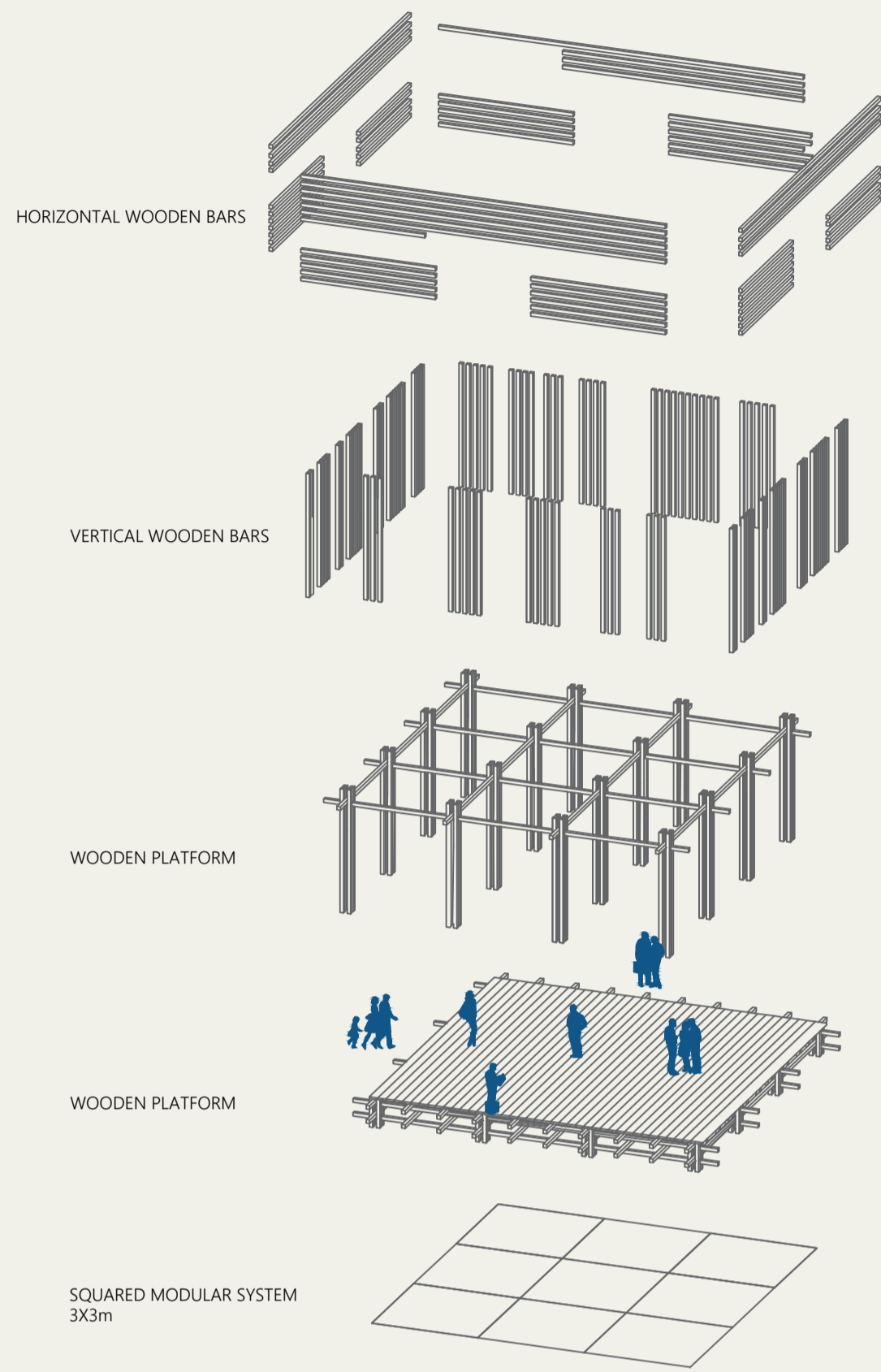
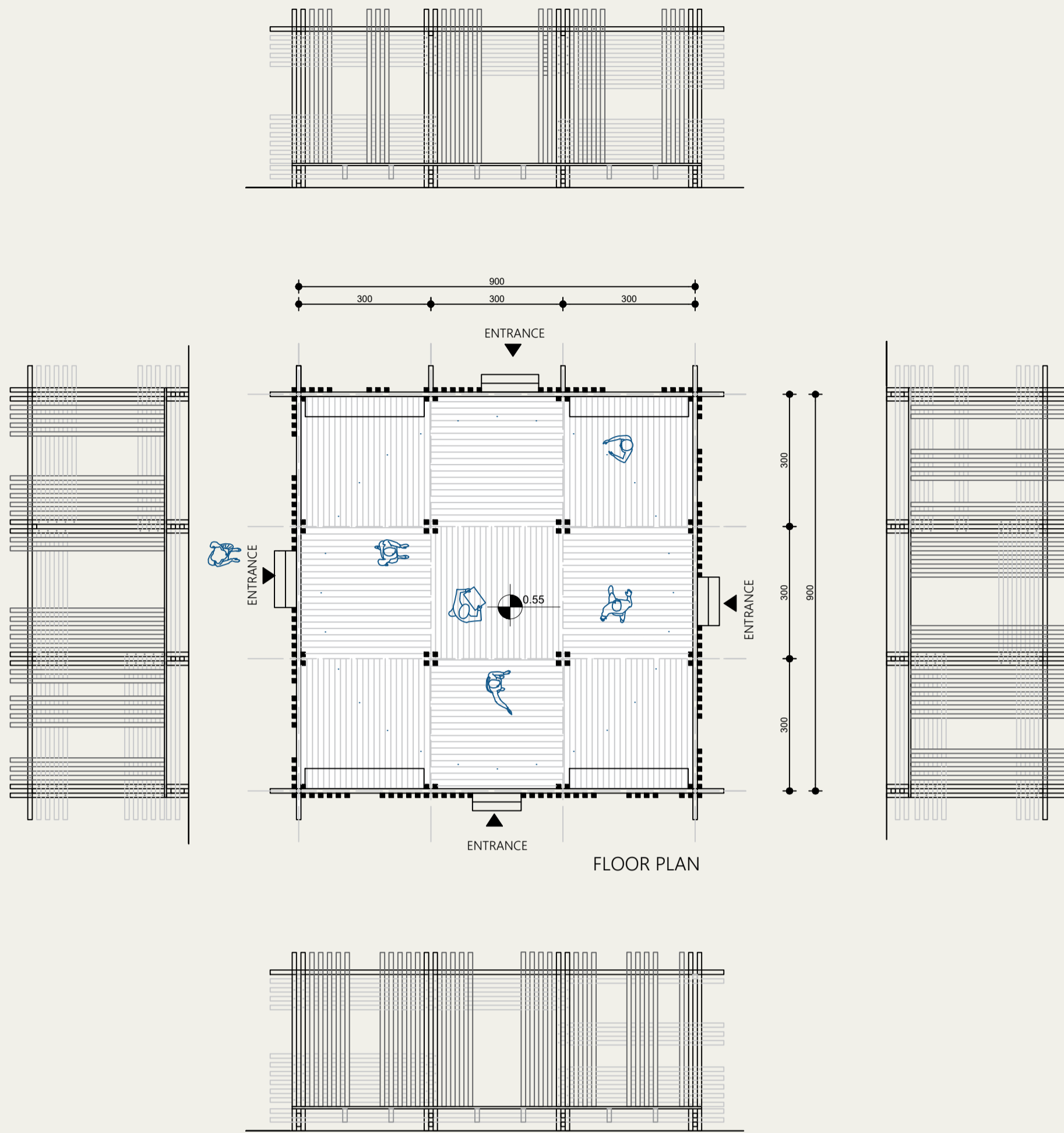
HOMAGE TO TOGETHERNESS

The Covid-19 pandemic has completely changed our lives. With the world slowly adapting to the "new normal" we start to learn how to interact with each other, how we work, how we move and travel. The practice of social distancing means staying home and away from others as much as possible. But also the physical distancing which means staying at least two meters away from other people.

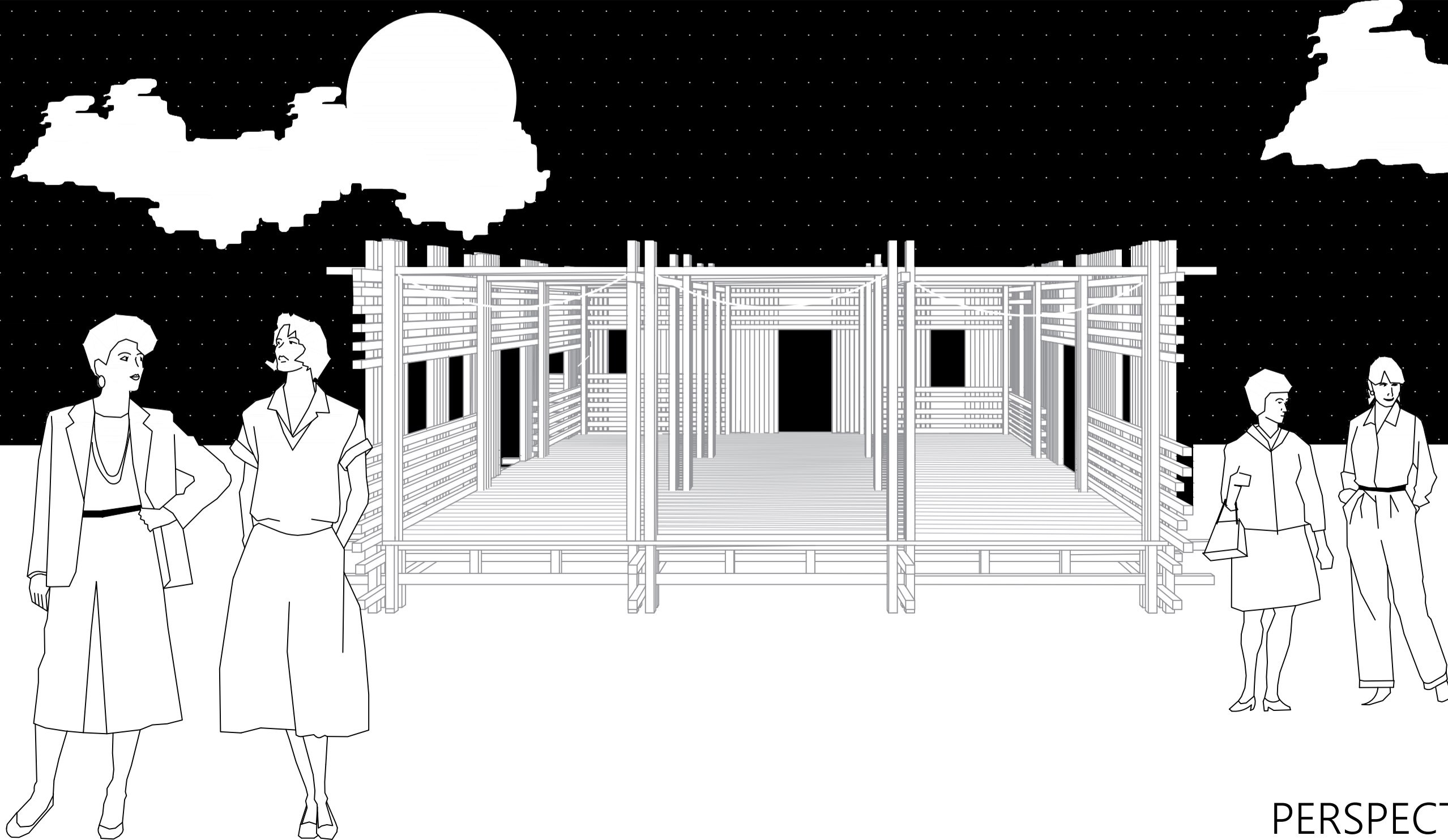
This pavilion is designed by the idea of creating intimate space for people where they slow down, relax and enjoy the serenity of its surrounding landscape. The pavilion sits down on an empty grassy area near the Kalin hotel which is the main meeting place, surrounded by the traditional houses and the beautiful nature of Lazaropole.

The design of the pavilion is minimal and simple. The flexibility of modules makes it adaptable to any type of need and requirements. This modular wooden structure is made out of horizontal and vertical wooden bars with the same size and high creating a rhythm by columns and empty windows. The wooden structure is covered with fabric in order to protect the place from the sun.

The access to the pavilion is from four different sides meeting in one central spot. The seating spots are in the angles of the pavilion circulating around.



E=1:100



PERSPECTIVE VIEW