

HOMAGE TO TOGETHERNESS

THE LAST RESORT
REMEMBERING SPATIAL PATTERNS OF TOGETHERNESS

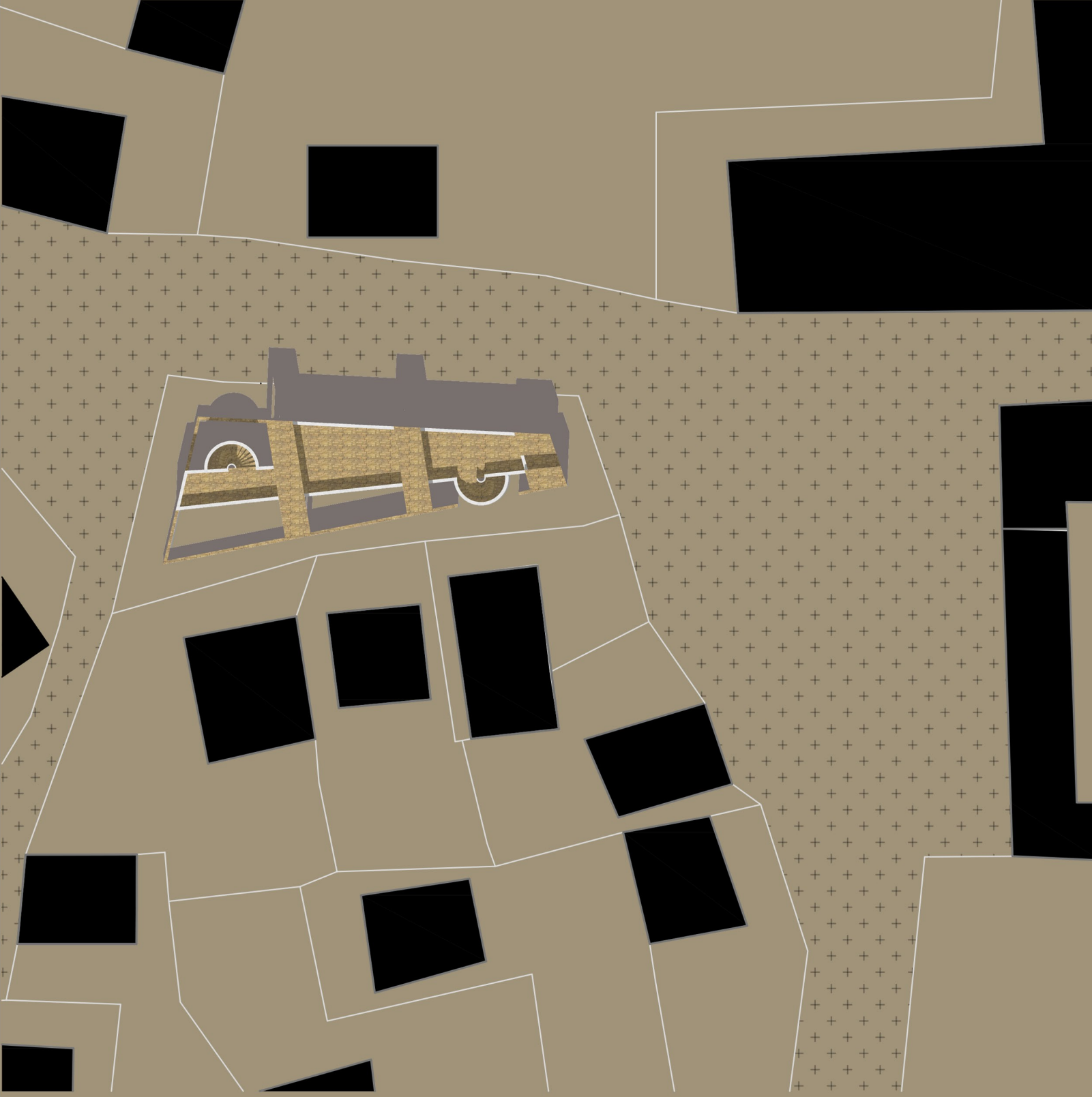
DIGGING DEEPER TO EXPLORE
THE MEANING OF TOGETHERNESS,
THE IDEA BEHIND THIS DESIGN PROPOSAL
IS A COMBINATION, OF MATERIALS,
OF FUNCTIONS, AND OF INDIVIDUAL ACTIVITIES
THAT PUT TOGETHER A COLLECTIVE WRAPPED IN
A MONUMENTAL PIECE OF SOLITUDE AND UNITY.

THEREFORE, EACH ASPECT COMES AS
A COMBINATION OF PERSONAL FEELS AND
LOCAL MARKS IN ATTEMPT TO CONSTRUCT A
FORM OF GRATITUDE BEHIND
THE IDEA OF TOGETHERNESS.

DIVING IN THE ANALYSIS PROCESS,
THE SITE SPOKE FOR ITSELF
IN DIFFERENT MANNERS BY REPRESENTING
A PART OF THE VILLAGE'S PUBLIC CORE,
AN EXTENSION OF FEW FAMILY HOUSE YARDS
AND OF THE STREET AT THE SAME TIME.

DRONE PHOTO-MONTAGE

SITE PLAN 1:2000

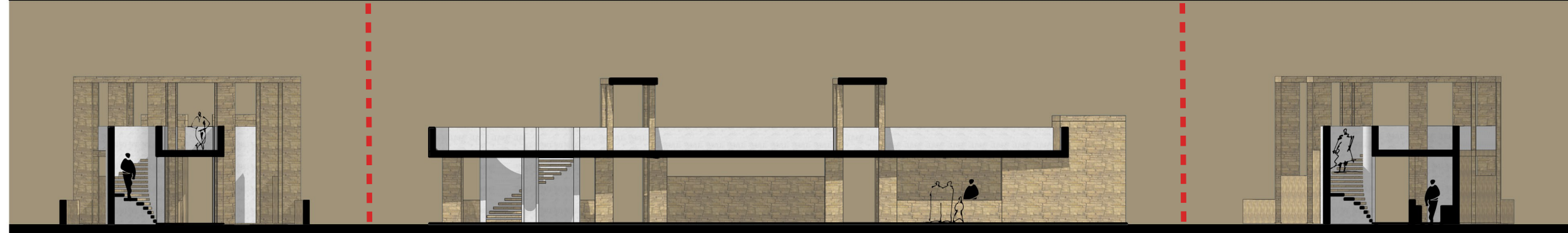


FLOOR PLANS 1:200

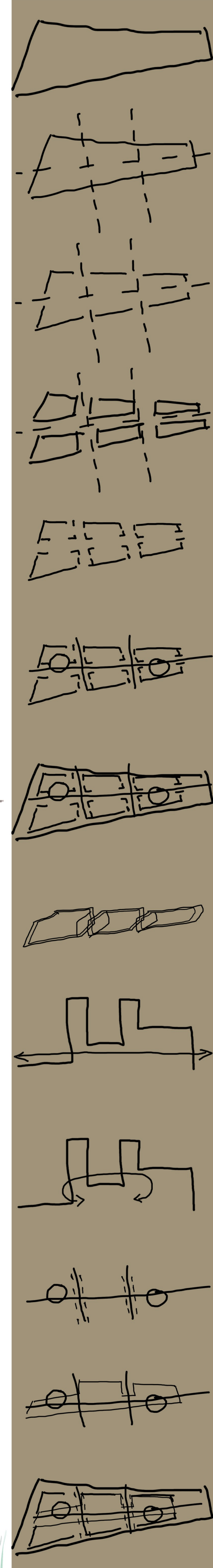
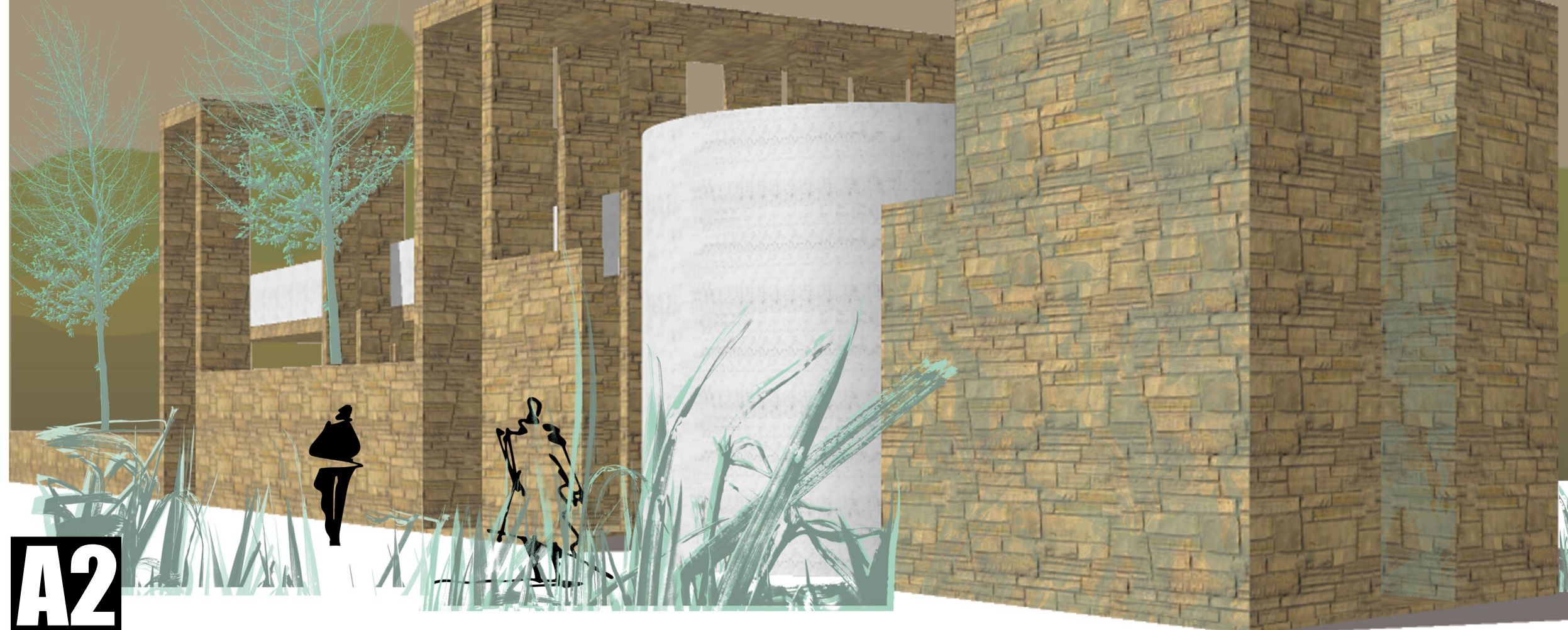


THE COMPOSITION MANIFESTS THE SITE FORM DIRECTLY,
DIVIDED BY CORRIDORS POSITIONED OVER READINGS OF
THE NEAREST CONTEXT.
THE LONGEST ROUT,
NARROWS ITSELF TOWARDS THE PUBLIC PLAZA,
MIMICKING THE TEMPORARY BAKERY BUILDING
FOUND THERE, AND FURTHER HOUSES IT.
HERE LIES A PRIMARY ACTION
THAT SYMBOLIZES TOGETHERNESS BY
INDIVIDUALLY PARTICIPATING IN AN EXPERIENCE.
KEEPING IN MIND THAT THE VILLAGE LAZARPOLE
FUNCTIONS ONLY AS A TOURIST DESTINATION
NOWADAYS, IT BRINGS UP VISIONS
OF PLACES WE VISIT AS AN INDIVIDUAL
OR GROUP EXPERIENCE
DURING TOURIST'S SEASONS.
THIS GOES AS A PRIMAL INSPIRATION
IN CREATING A PUBLIC SPACE
THAT'S BEYOND EVERYDAY CITY EXPERIENCE,
THAT ROOTS ITSELF IN THE CONTEXT
AS A LANDMARK OF PEACE AND SOLITUDE.

**CROSS-SECTIONS
1:200**

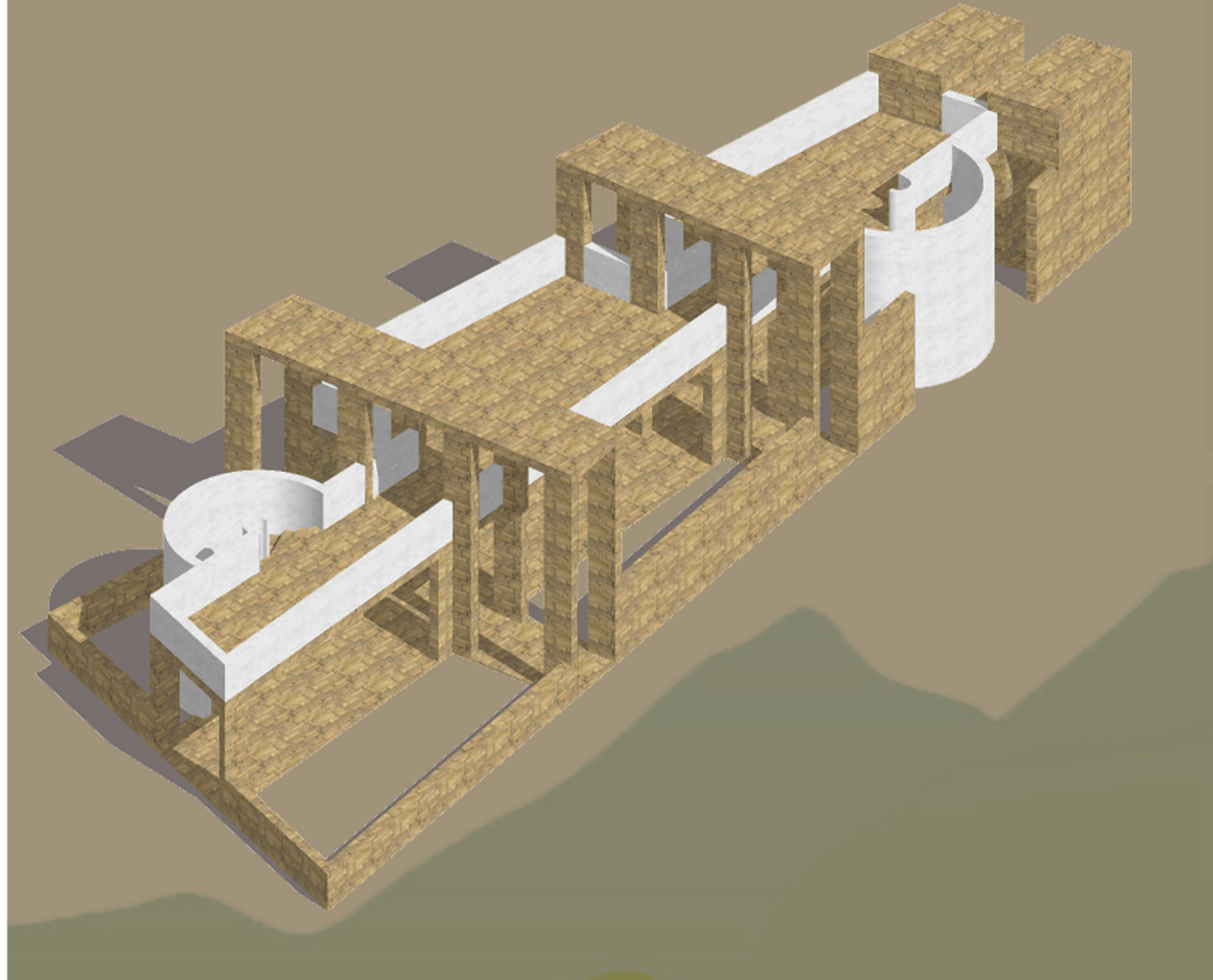


MAINLY, THE STRUCTURE STANDS AS A STONEY MONUMENT, A FOUNDATION, A RUIN.
IT REPRESENTS AN INTERPRETATION OF A LOCAL EXPERIENCE.
THE INTUITIVE APPROACH CONTRASTS IN CONCRETE,
BOTH SELF EFFICIENT AND UTILITARIAN IN ITS CORE MEANING,
YET DEPENDENT ON THE TRADITIONAL BASIS,
LIKE FLOWING THROUGH IT.





AXONOMETRY
SOUTH-WEST ORIENTED



APPROACHING FACADE
WEST SIDE

