

# HOMAGE TO TOGETHERNESS

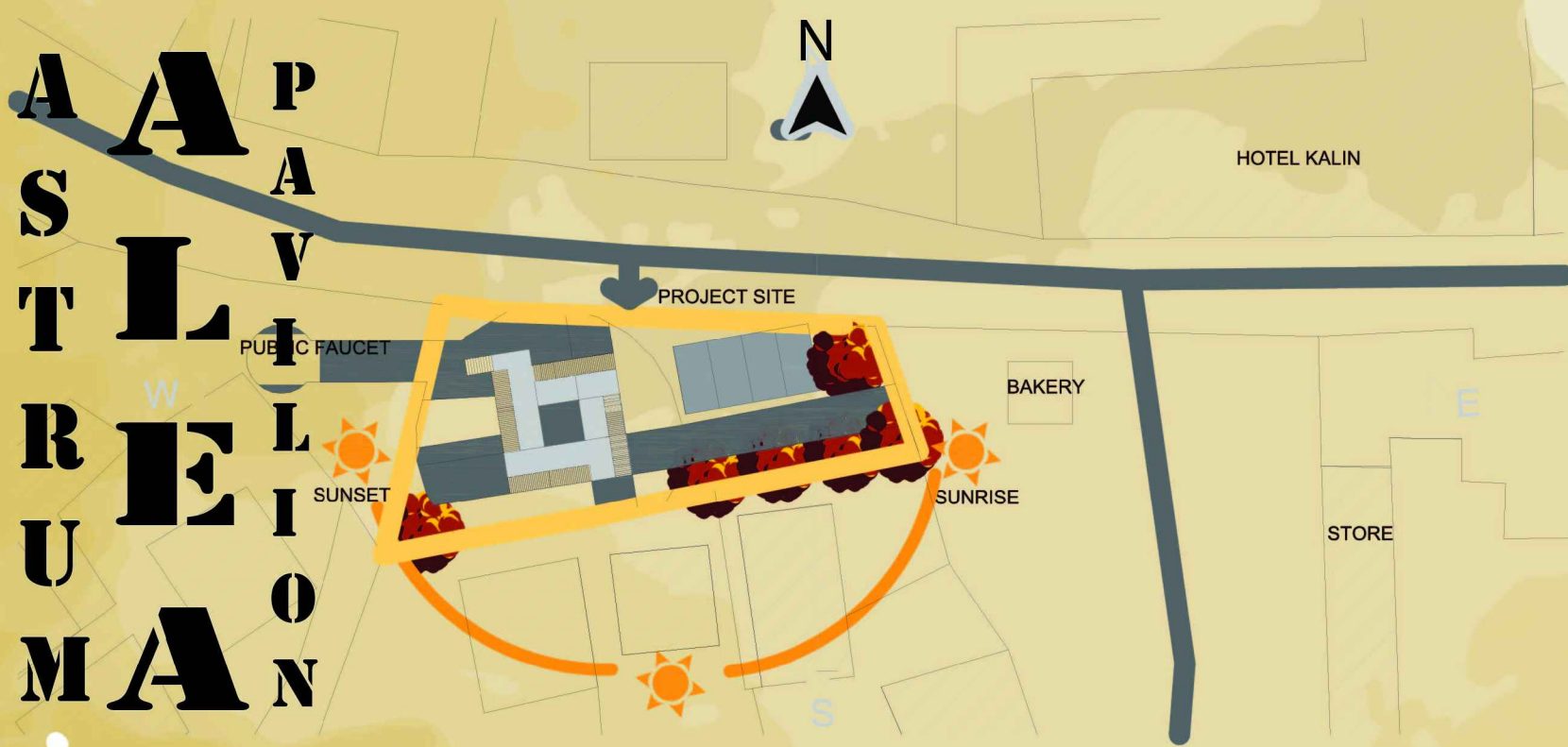
## ASTRUM



The pavilion's structure is inspired by this pavilion design in London



The pavilion's site plan conception is inspired by the painting of the artist El Lissitzky



SITE PLAN

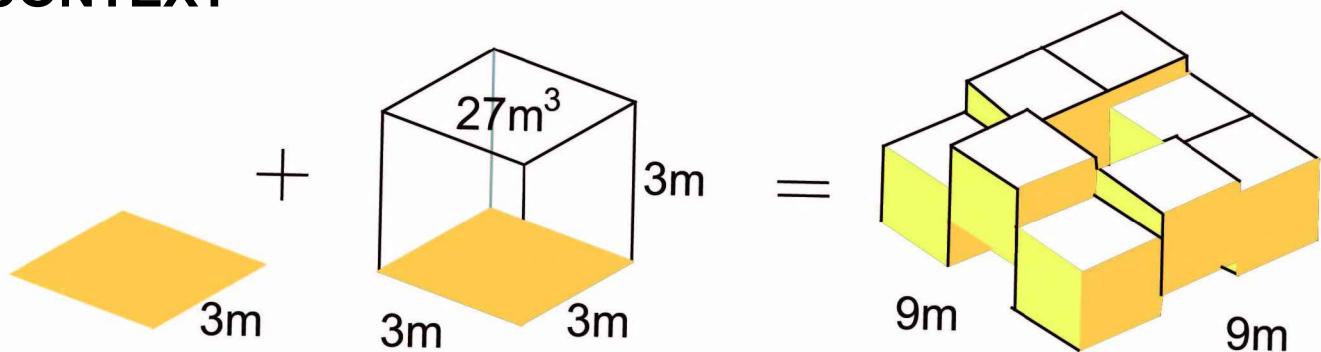


FLOOR PLAN



One of the most important things for this project was the connection with the village and its context. The resemblance is in the main structure of the village houses. Almost all of them have square shaped floor plans, so the pavilions structure is made out of squares. The houses are scattered all around the hills, so that way they create an interesting silhouette that is very organic even though the houses themselves are very structured.

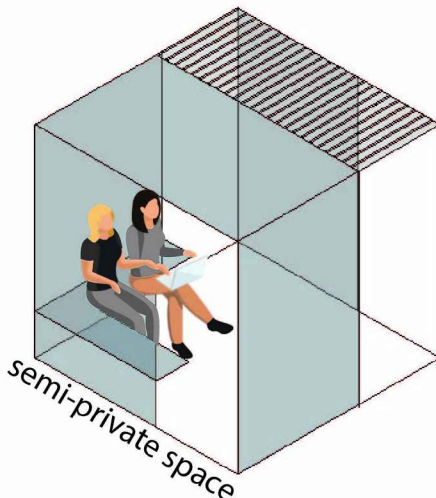
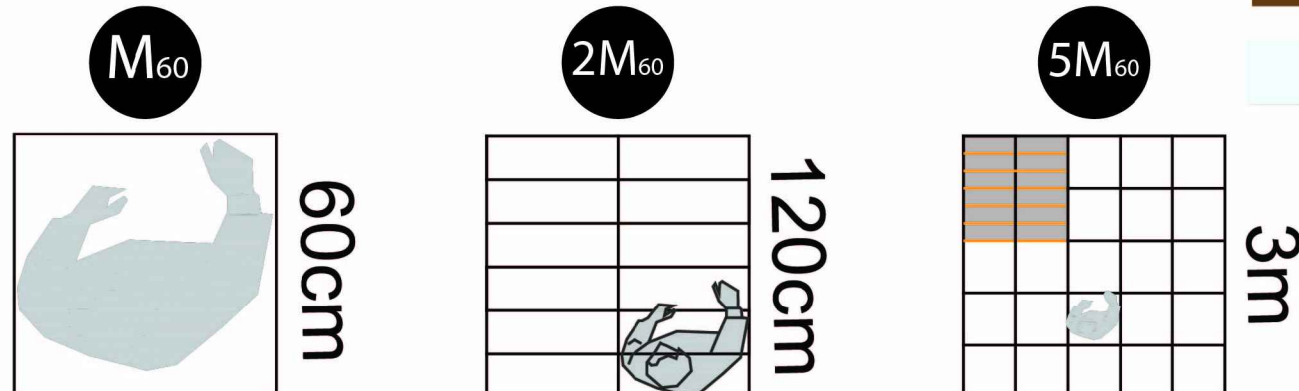
### CONTEXT



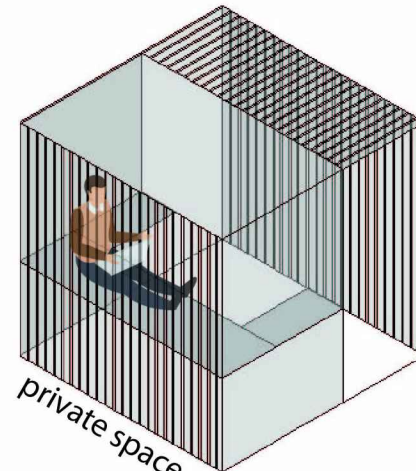
### FORM

The module used in the pavilion is ergonomical. This module is also used in Corbusiers work.

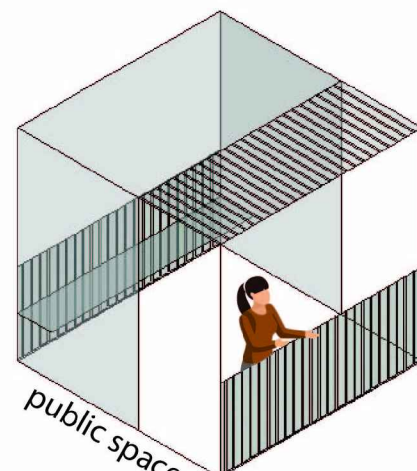
### MODULOR



semi-private space



private space



public space

The pavilions have multiple purposes. The first and main purpose is relaxation, meaning you can seat/ lay while enjoying nature and the view of the beautiful landscapes.

The second and more "attractive" purpose is looking at the night sky with the telescopes that you can find in some of the cubes.



### FUNCTION



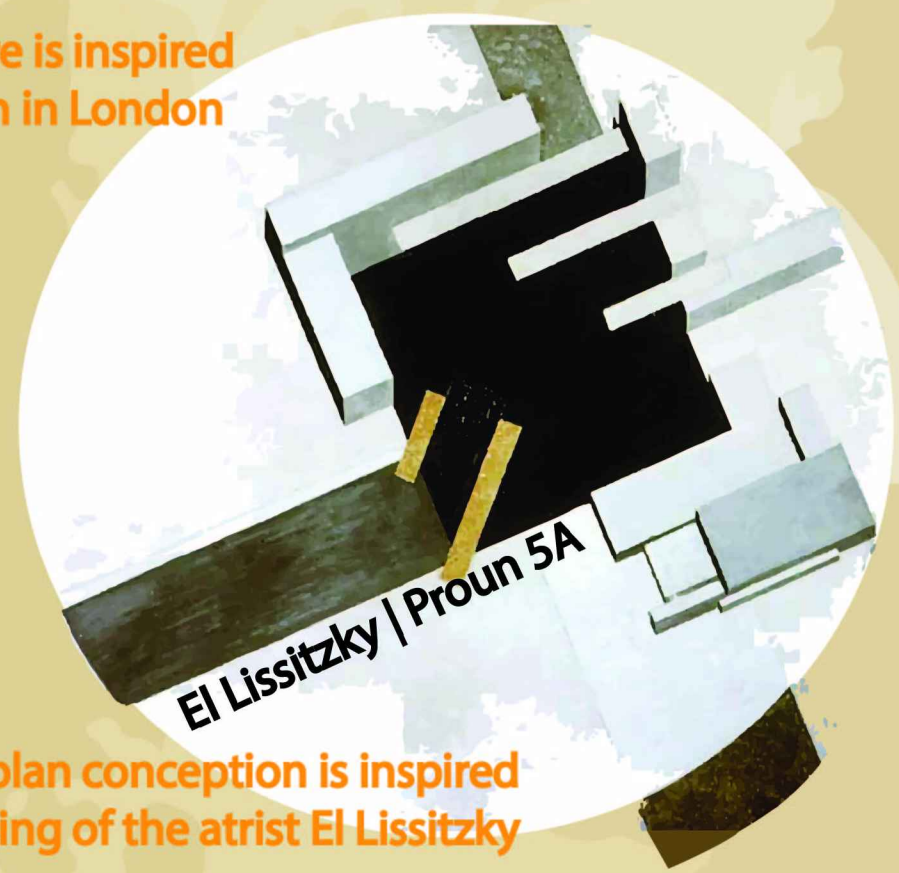


# HOMAGE TO TOGETHERNESS

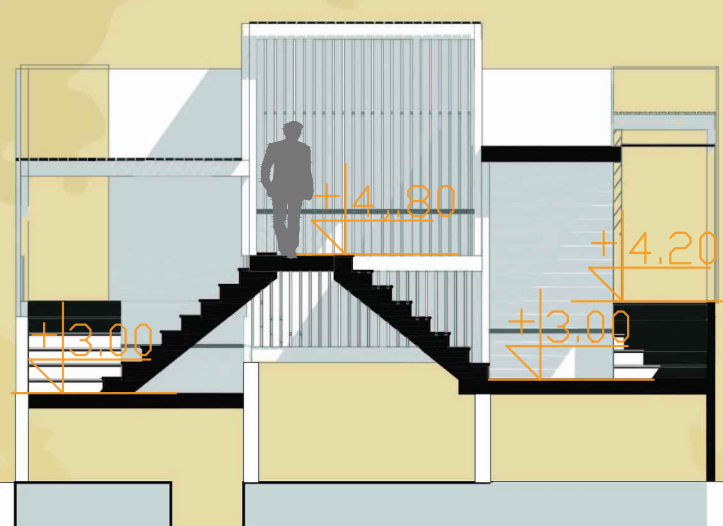
## ASTRUM PAVILION



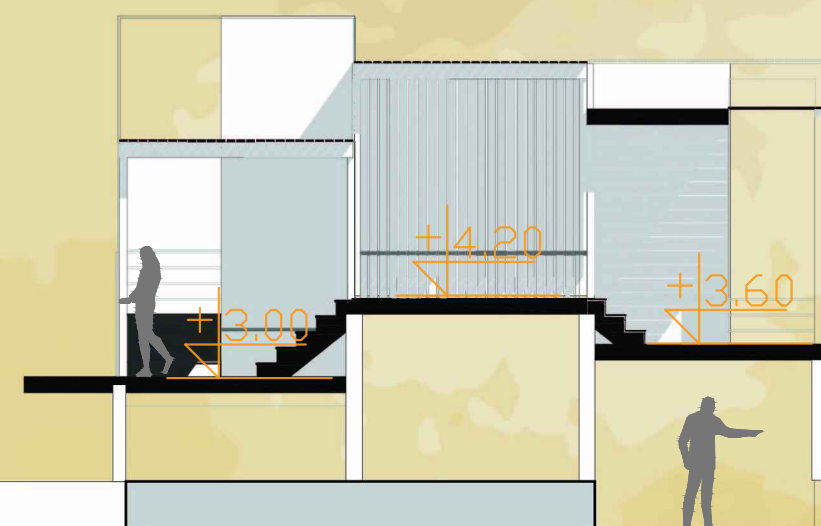
The pavilion's structure is inspired by this pavilion design in London



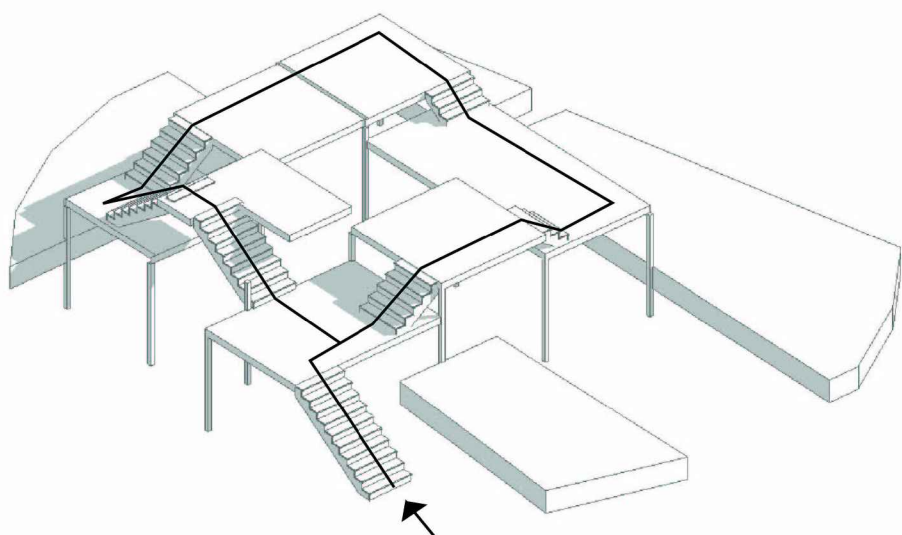
The pavilion's site plan conception is inspired by the painting of the artist El Lissitzky



SECTION 1-1



SECTION 2-2



The movement in the pavilion is continuous and is circulating across the edges of the structure.

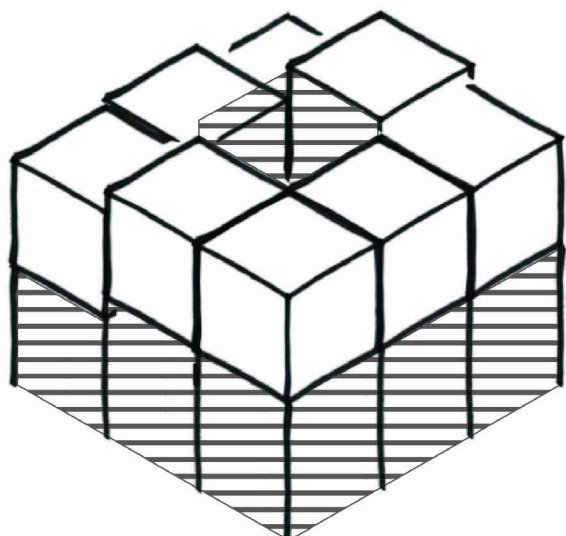
When entering the first cube the movement is undetermined, meaning you find yourself in a point from which you can see that there are two different paths that lead you to two end points of the pavilion.

Every cube is designed in a similar manner. The introvert concept of the cubes and the movement make a unique experience where you almost feel like you are intrigued and want to explore the space, like a maze just without the claustrophobic feeling.

### MOVEMENT

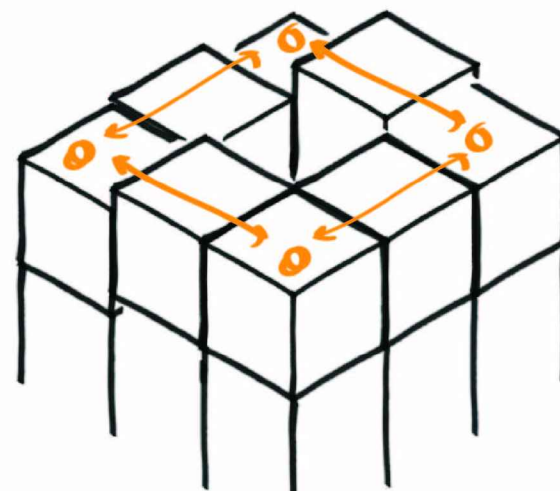
The pavilion is elevated 3m above the ground so they create an open space, almost square like, where people can unite and socialize. Although the cubes have different characters, when it comes to their level of sociality, they are still much more private than the ground level.

□ PRIVATE = SOLID  
▨ PUBLIC = VOID



### PUBLIC/PRIVATE

In each corner of the pavilion there is an opening so that they become viewpoints from where you can look outside. This way the edges become "transparent", and they incorporate in the landscape.

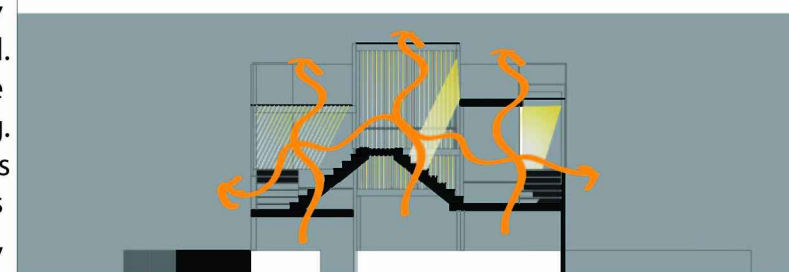
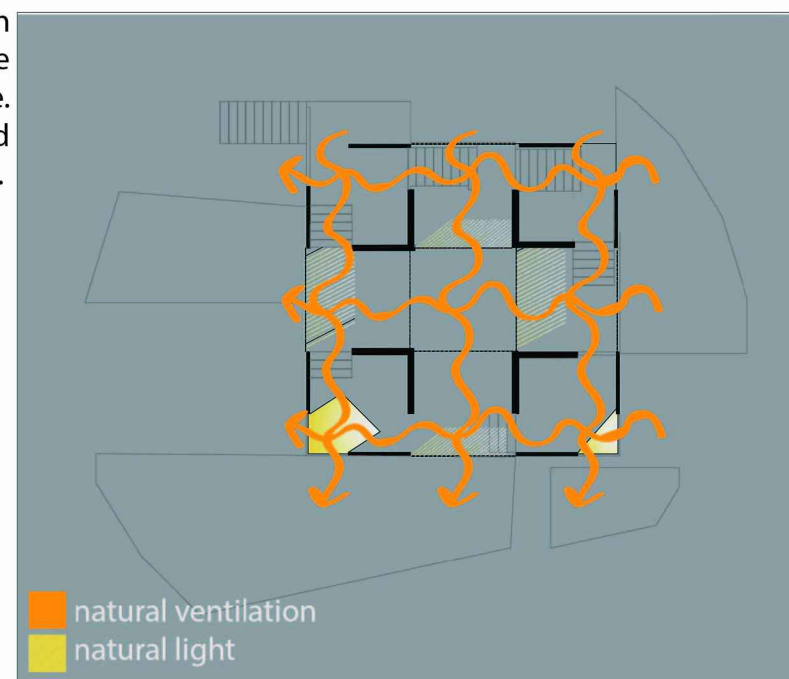


The natural lighting of the pavilion comes mainly from the edges of the squares. They are completely opened.

Also for feeling more comfortable every staircase is illuminated from the ceiling.

A very relaxing atmosphere is created in the cubes where there are transparent walls (wooden planks with slits). When the light hits directly at them, playful shadows make a very peaceful atmosphere.

### VIEW POINTS



### ILLUMINATION



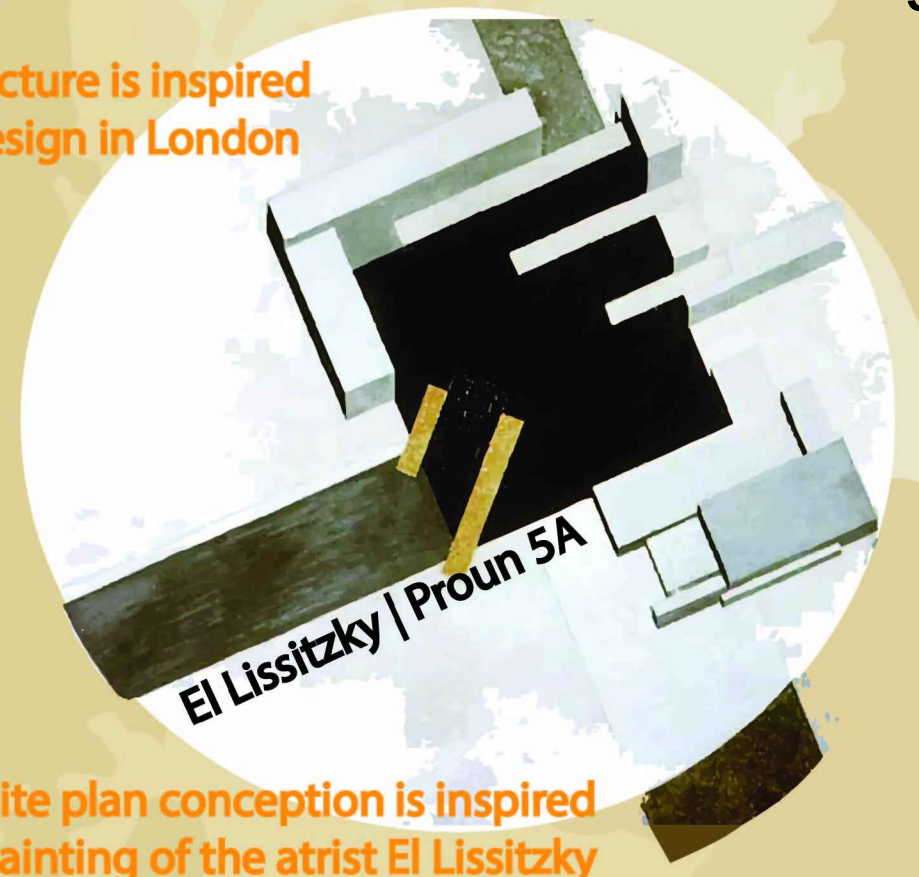


# HOMAGE TO TOGETHERNESS

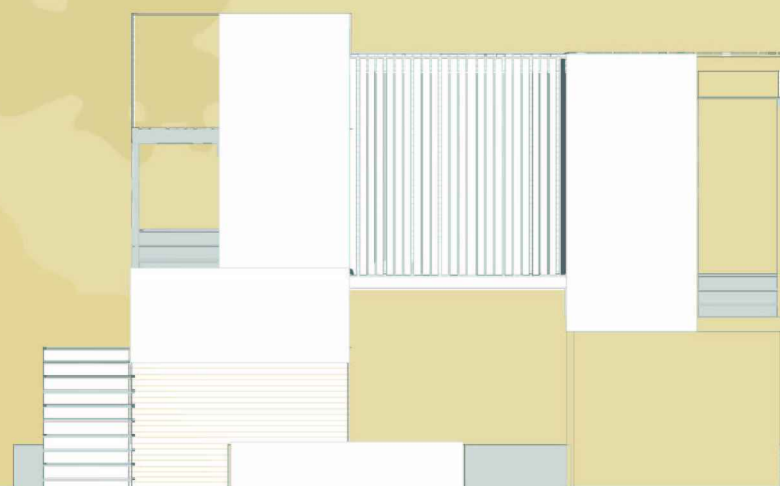
## ASTRUM PAVILION



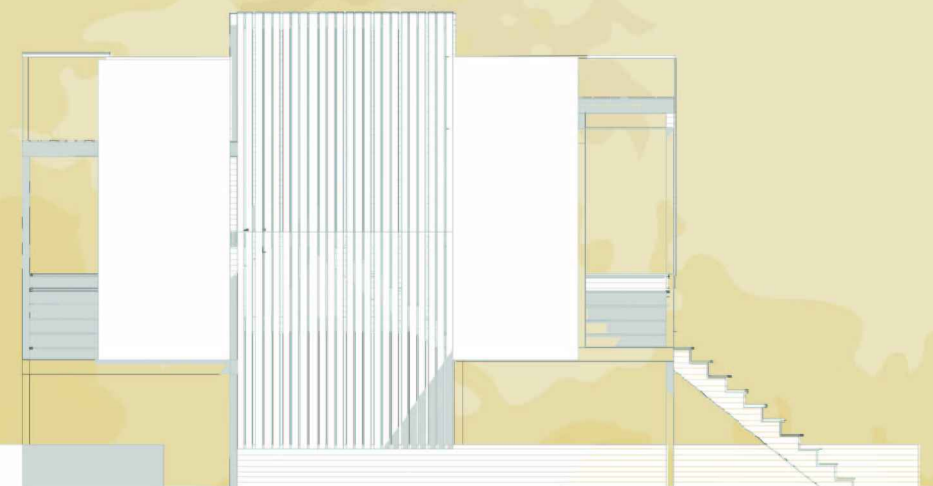
The pavilion's structure is inspired by this pavilion design in London



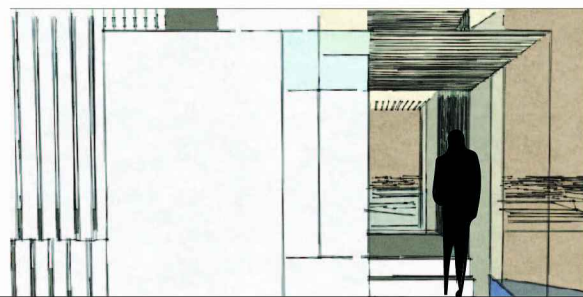
The pavilion's site plan conception is inspired by the painting of the artist El Lissitzky



WEST ELEVATION



NORTH ELEVATION



The site plan has parking lots for the tourists and the locals. The public faucet is connected with one of the paths. The circular shape is also integrated in the concept. The open space is meant to bring people together and create a place where you can enjoy nature, the mountains and the beautiful night sky.

### ATMOSPHERES

### MATERIALIZATION CONSTRUCTION STRUCTURE

The pavilion is made with wooden construction system. The main construction elements are wooden beams (15/30) wooden columns (15/15). They are connected with wooden panels 5/10. The transparent parts are made with glass.

