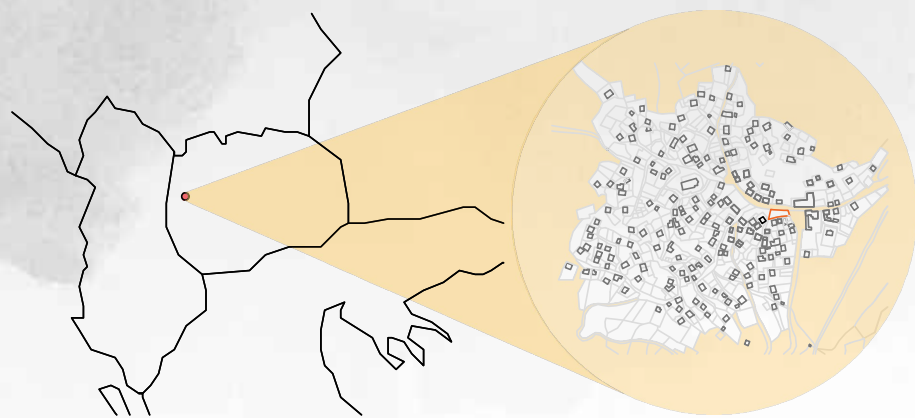
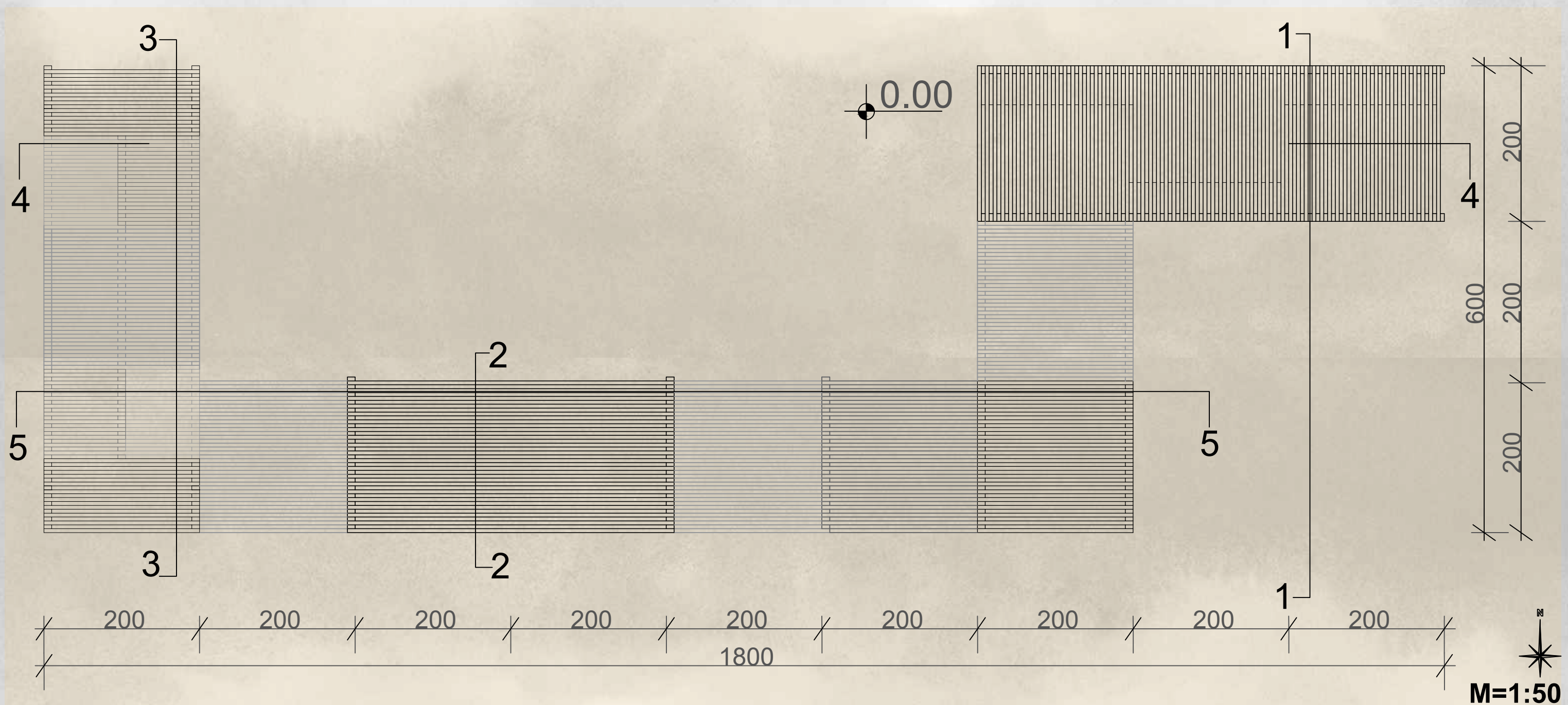
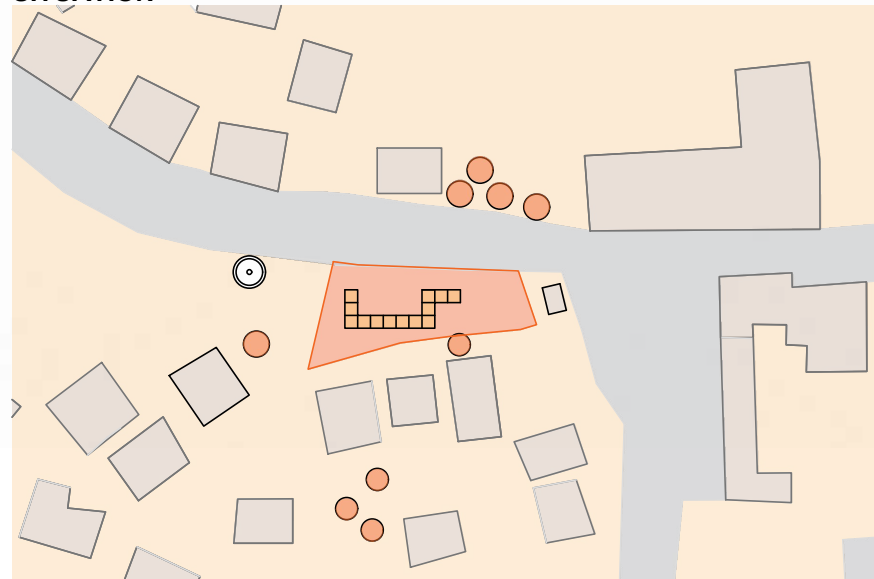


CUBIC REPTILE



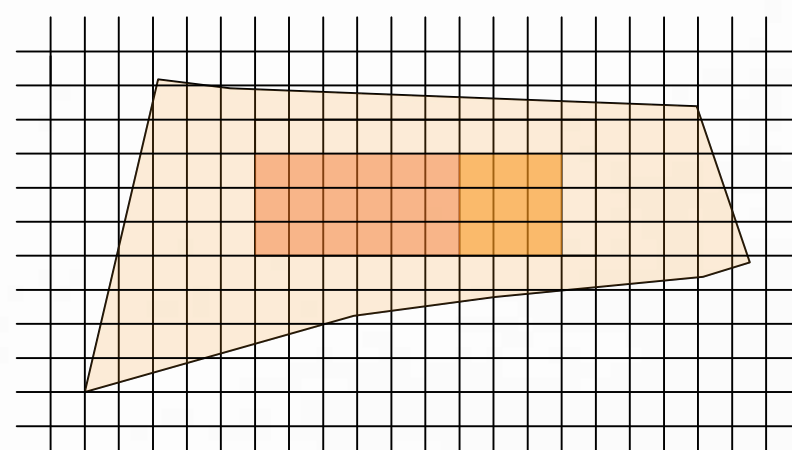
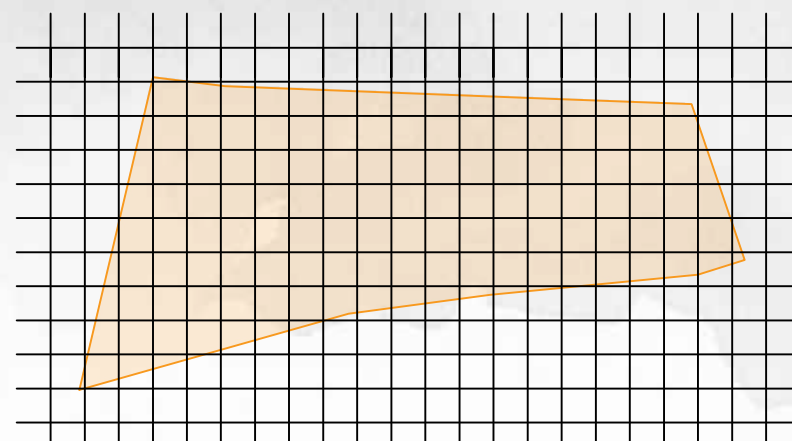
Location:
The pavilion is located in the Macedonian village of Lazaropole which is a large area without forest. The village represents a tourist destination.

SITUATION

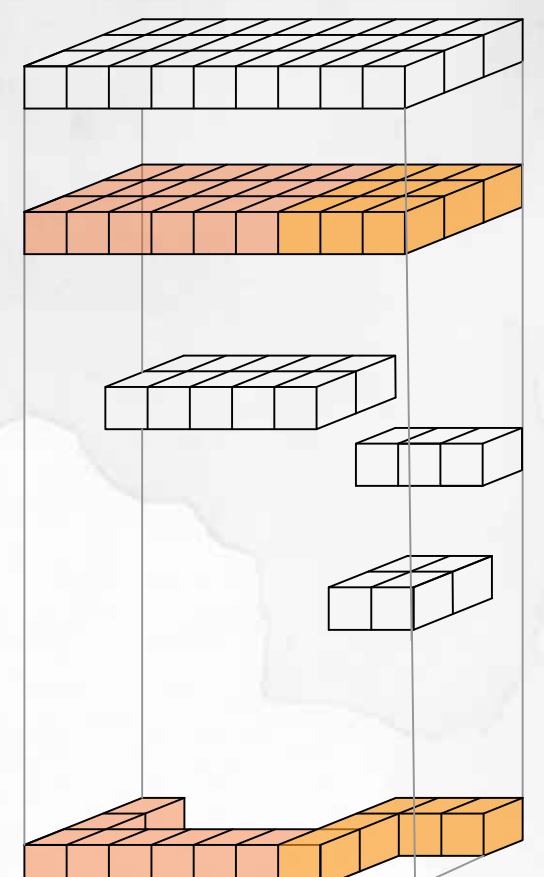


Site Location:
The site where the pavilion is located is very intensive because there are some public places around it. Some of them are the hotel Kalin, public faucet which is frequently used by the locals, restaurant and bakery. That place also forms the square of the village Lazaropole.

Area of the site: 457.5 m²
Area of the pavilion: 52 m²

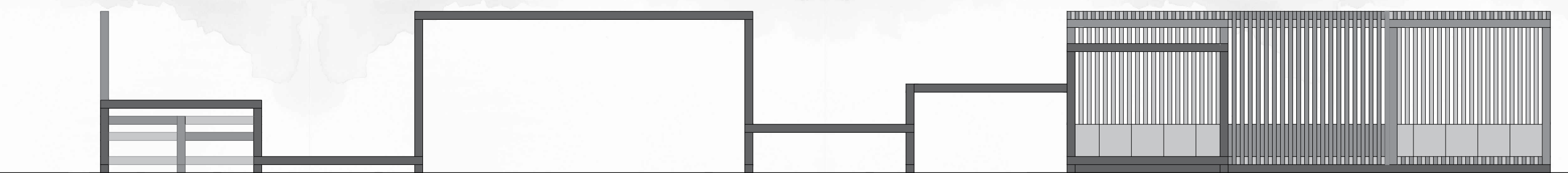
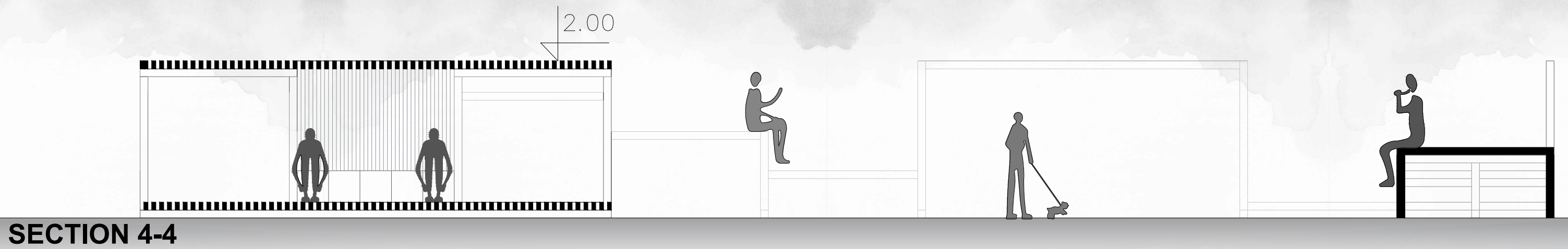


The site is divided with a squared net with sides of 2 meters. We created a rectangle and divided it into two parts for two different functions and took out the volume that was needed for the functions of the pavilion.



a a $a=2m$

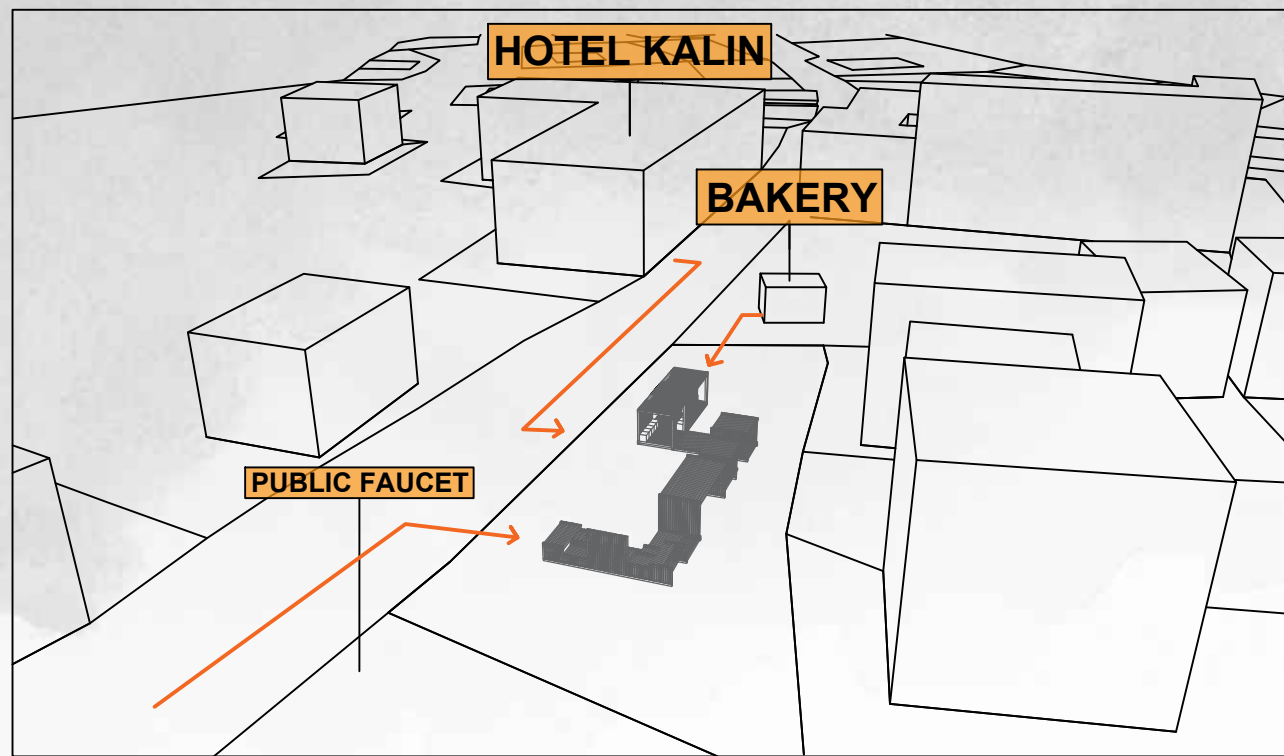
ELEVATIONS AND SECTIONS



NORTH ELEVATION

M=1:50

ANALYSIS



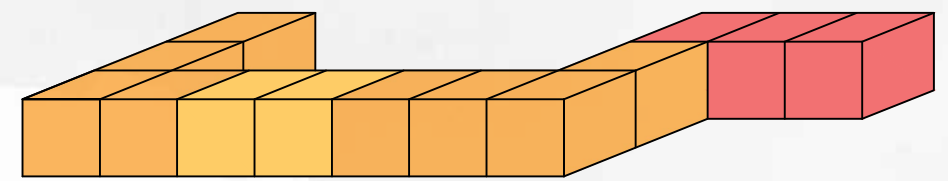
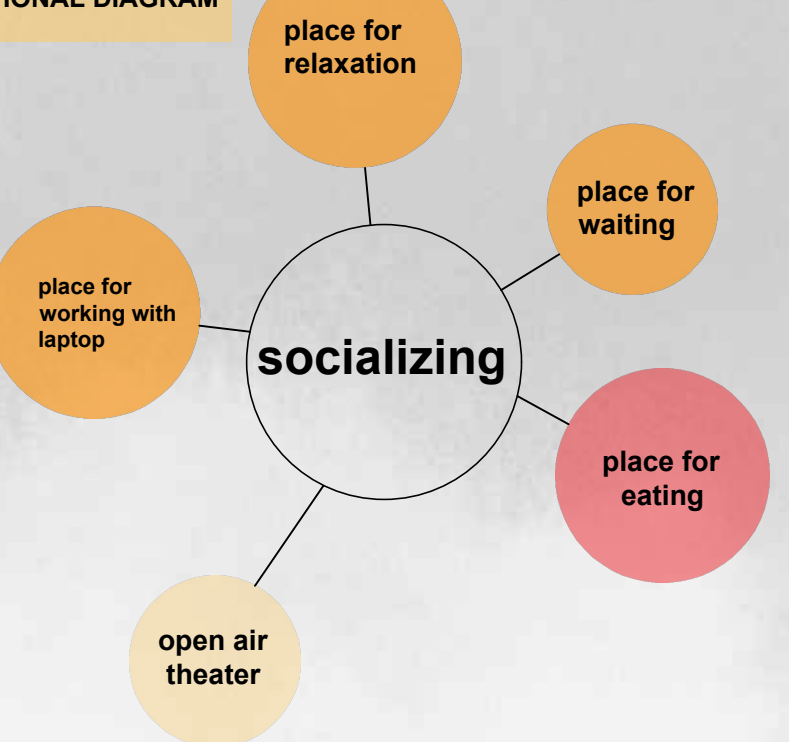
Axonometric view of the site and pavilion. The pavilion has strategic location, east part of the pavilion has connection with the bakery. The other paths has connection with hotel Kalin and the public faucet where people can easily reach to the pavilion.

who can use it?

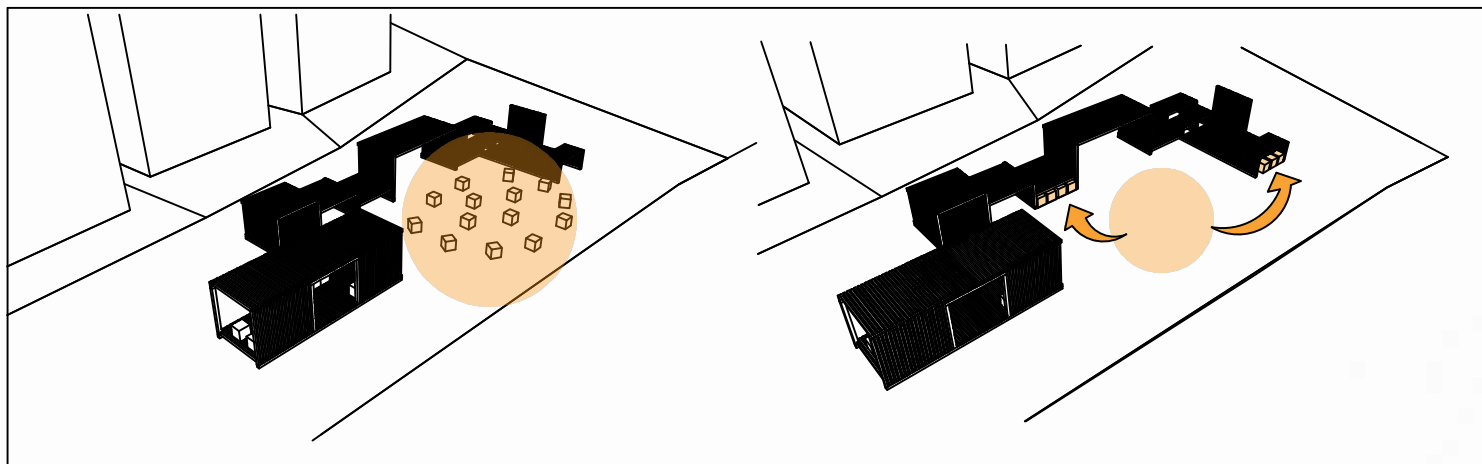


As the concept says we created a place where all people can use. We brought the togetherness to an object which creates a special place that is accommodate to everyone.

FUNCTIONAL DIAGRAM

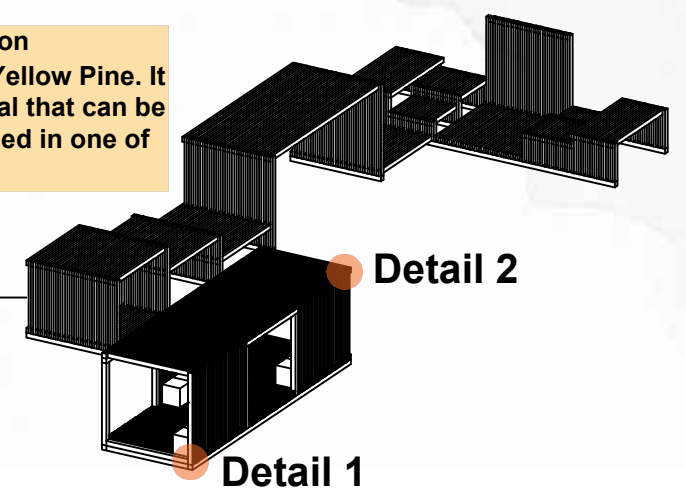


The wooden cubic chairs can move easily and can be placed in front of the open air theater. They can be stored under the platforms.

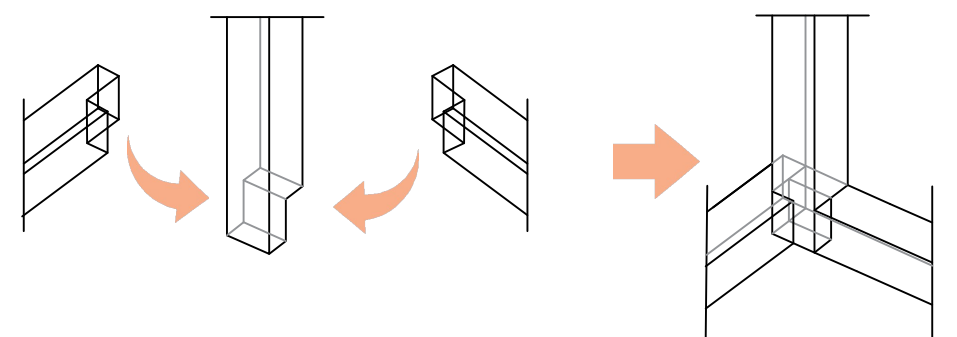


CONSTRUCTION

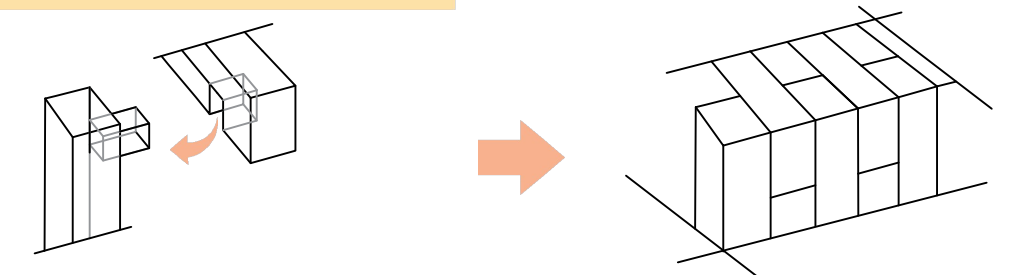
wooden construction
Pressure-Treated Yellow Pine. It is a durable material that can be left natural or stained in one of several colors.



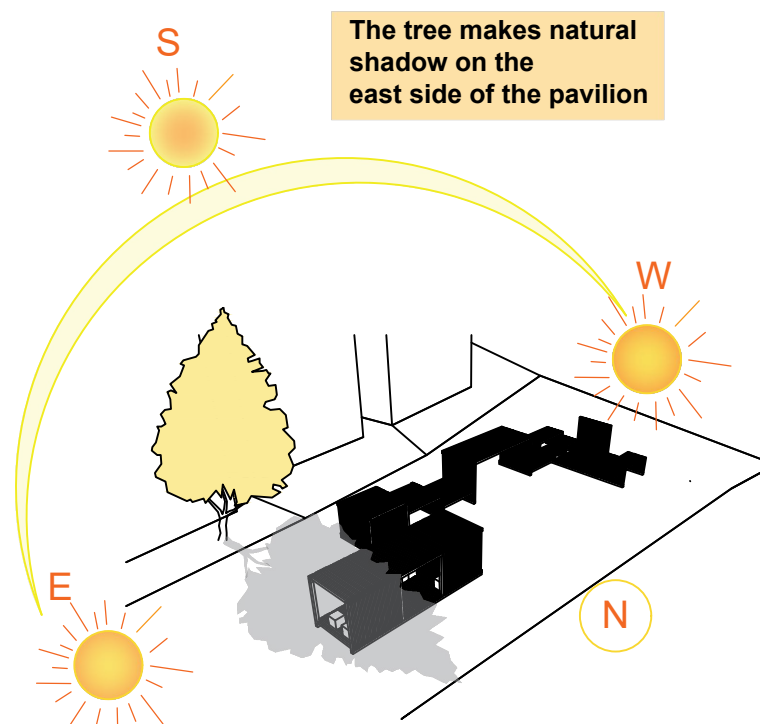
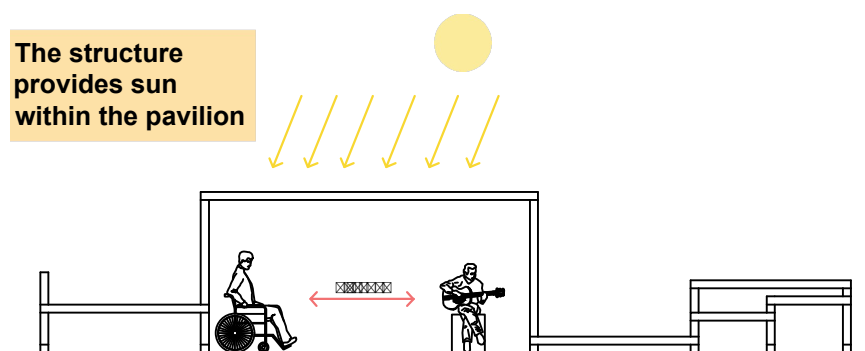
DECONSTRUCTION OF DETAIL 1



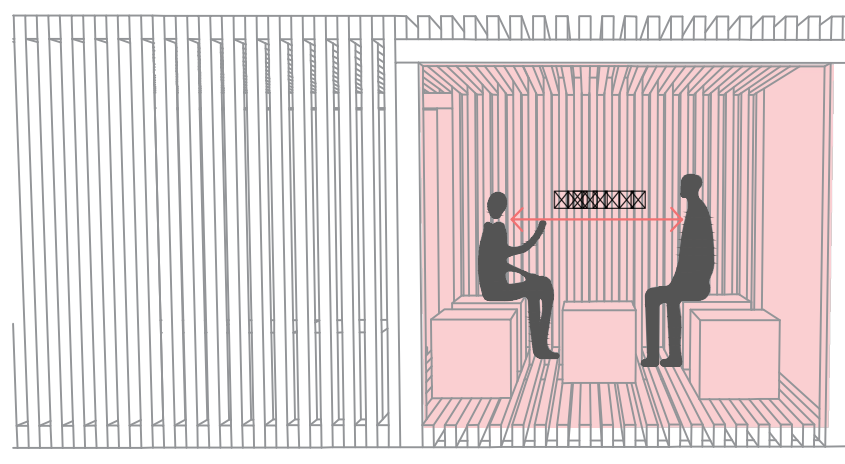
DECONSTRUCTION OF DETAIL 2



The beams for the roof also share a common interlocking detail, the vertical post taking on the loads from the two beams it supports.

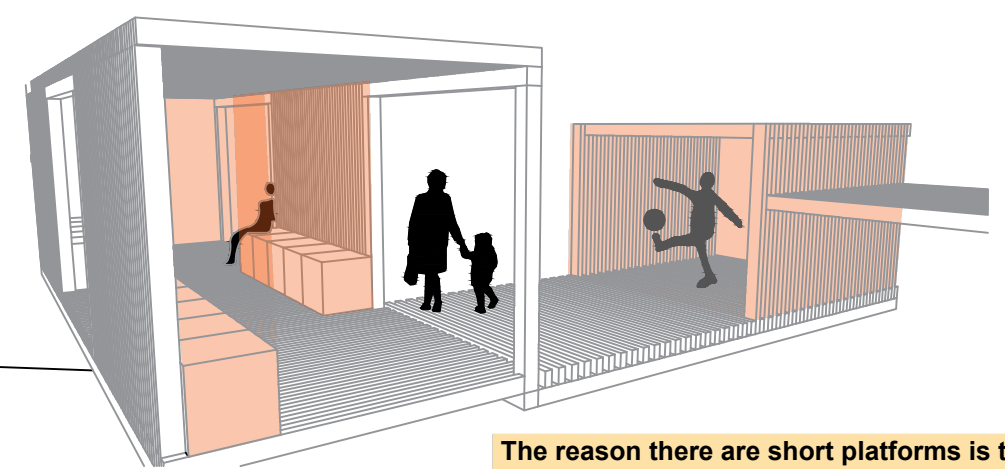
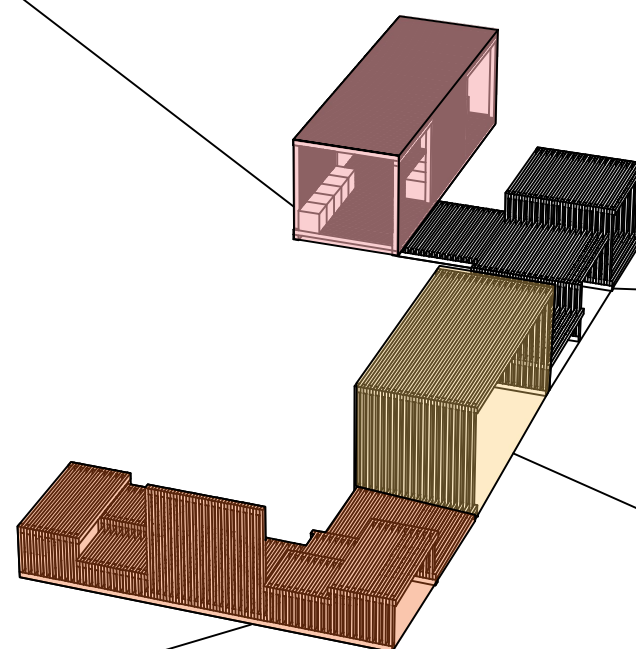


The tree makes natural shadow on the east side of the pavilion

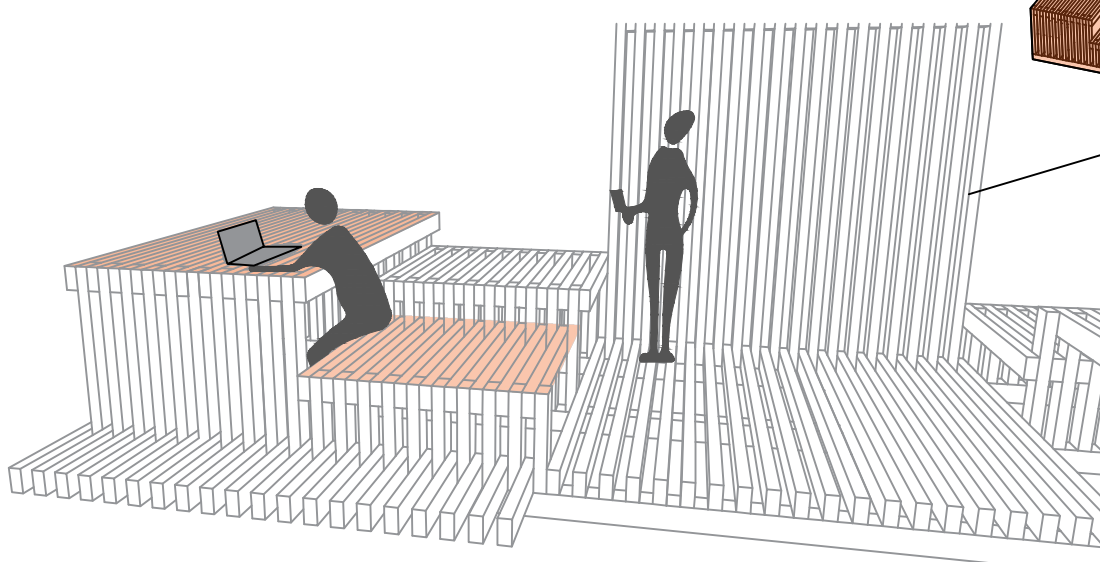


The entrance from the east side contains a passage and adjustable chairs so that they can be placed according to the social distance rule.

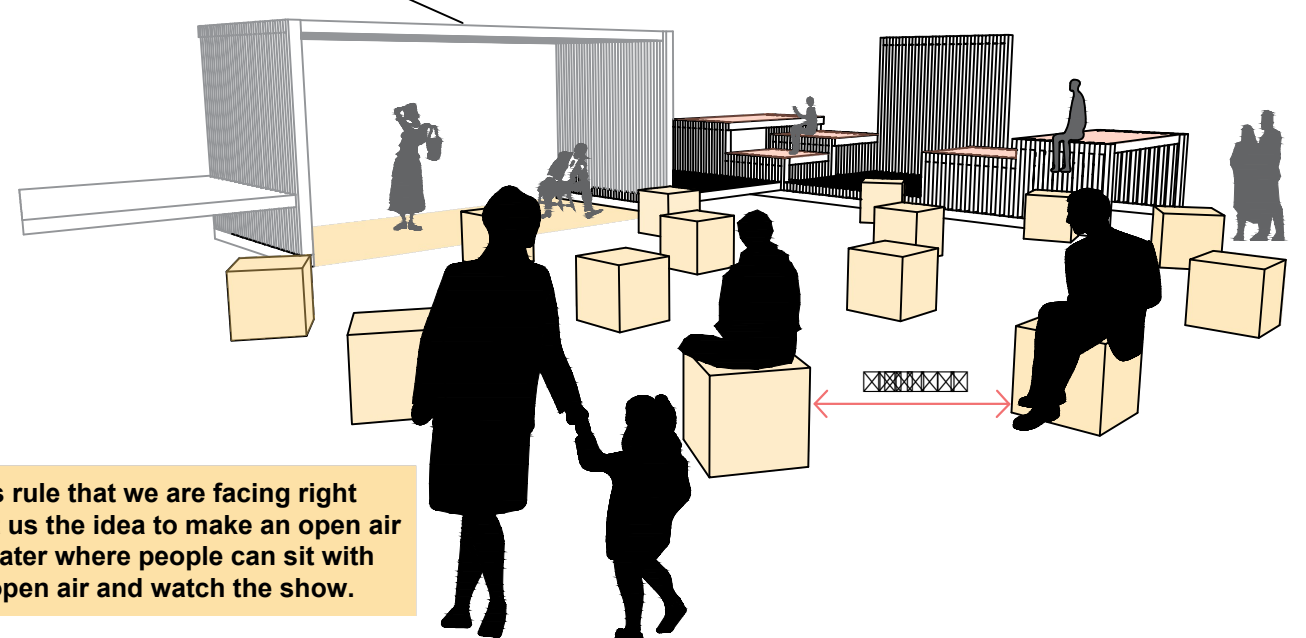
The pavilion can be divided into three components, an entrance, a viewing and relaxing area looking towards the mountains and the open air theater.



The reason there are short platforms is that children can pass under them and play under them. The low height creates a comfortable zone for them.



The sitting platforms are multifunctional. They can also be used as tables which creates an area for eating or working.



The 2 meters rule that we are facing right now brought us the idea to make an open air part time theater where people can sit with distance in open air and watch the show.