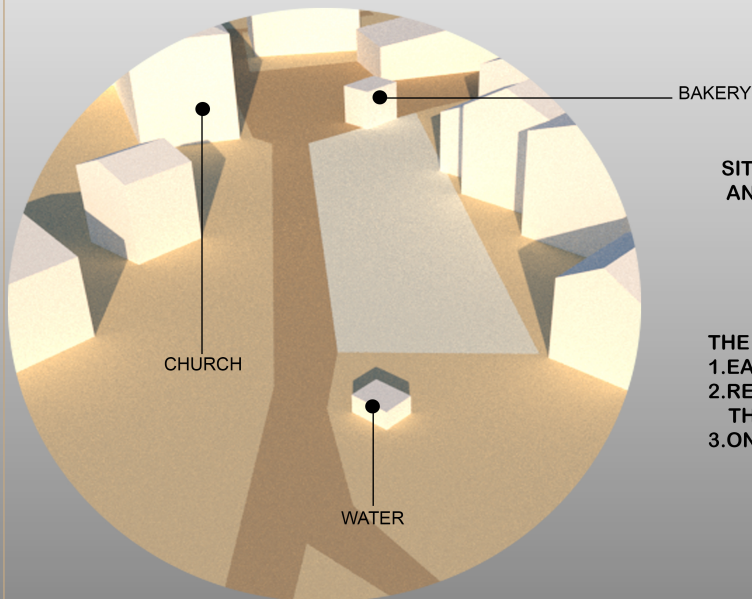


POLYVALENCY

171duj

LIFE IS AN DYNMIC AND ALWAYS EVOLVING AND CHANGING PROCESS.
FROM CHILDHOOD TO ADULthood OUR NEED ,PREFERENCES CHANGE
WITH TIME. INFACt OUR PREFERENCES AND MOOD CHANGES EVERY MOMENT
MEANING OF TOGETHERNESS IS DIFFERENT FOR EVERYONE
FOR SOME TOGETHERNESS IS BONDING WITH OTHERS OR COMING TOGETHER
AS A SOCIETY WHILE FOR SOME TOGETHERNESS CAN MEAN BONDING WITH
THEMSELVES OR THEIR SOUL

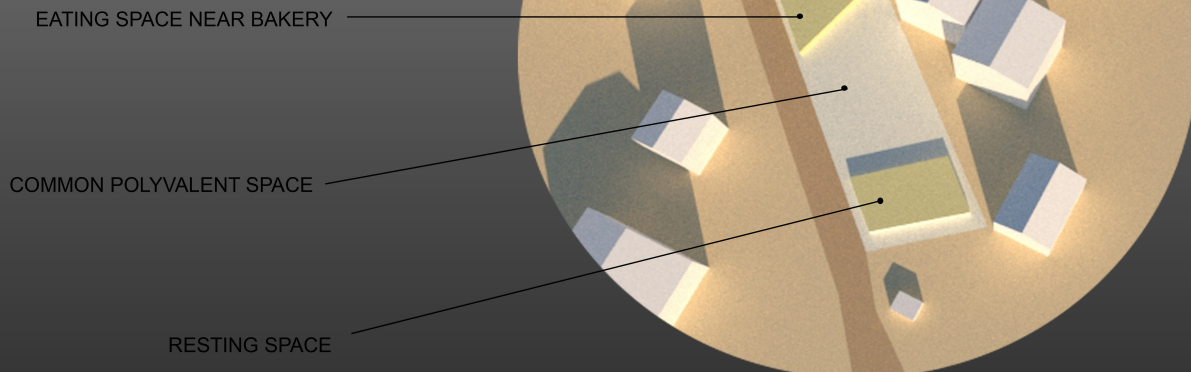


SITE IS SURROUNDED BY A CHURCH, A BAKERY
AND A WATER POINT

THE SITE AS PER MY OPINION NEEDS TO PROVIDE:
1.EATING SPACE FOR BAKERY
2.RESTING SPACE FOR TOURISTS COMING INTO
THE CHURCH
3.ONE COMMON SPACE FOR THE VILLAGERS

THUS THE SITE AS WHOLE IS DIVIDED INTO THREE PARTS:

1. EATING SPACE
2. PLAYING CUM RESTING SPACE
3. COMMON OPEN SPACE



CONCEPT

TRAMPOLINE

2M X2M TRAMPOLINE WITH SPACE BELOW
IT ATTRACTS PEOPLE AND IGNITES INTERACTION

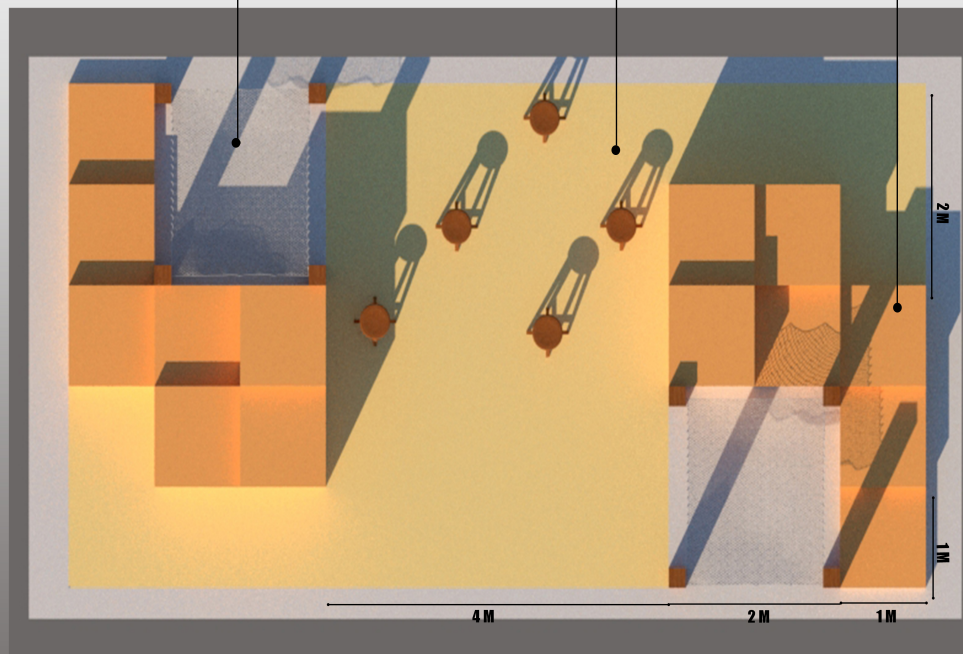
OPEN SPACE WITH STOOLS

ITS A POLYVALENT SPACE WITH
STOOLS PLACED
IT CAN BE USED FOR COMMUNITY
ACTIVITIES LIKE DINNER, GET TOGETHER ETC.

STEPS

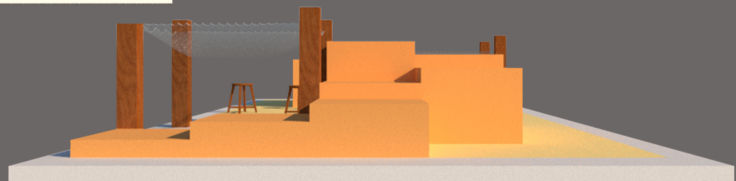
1MX1M STEPS ACT AS PLACE OF
INTERACTION AND SOLITUDE
DEPENDING ON THE MOOD OF USER

5 METRES WIDE



10 METRES WIDE

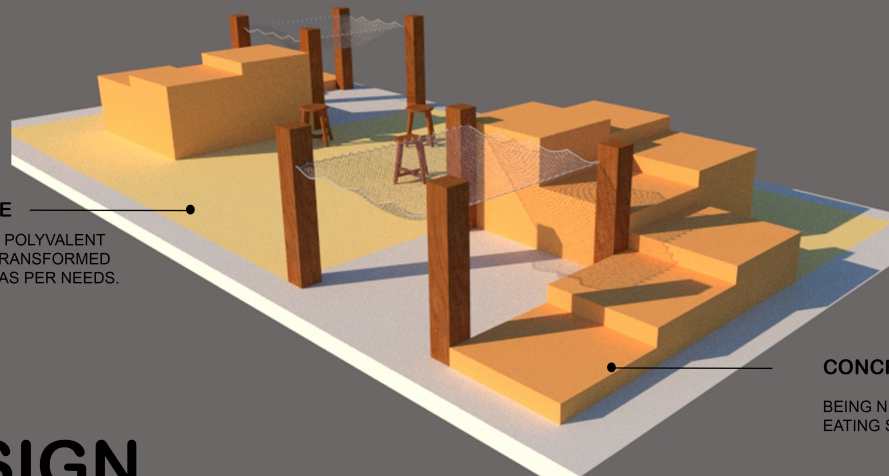
PLAN



ELEVATIONS

OPEN SPACE

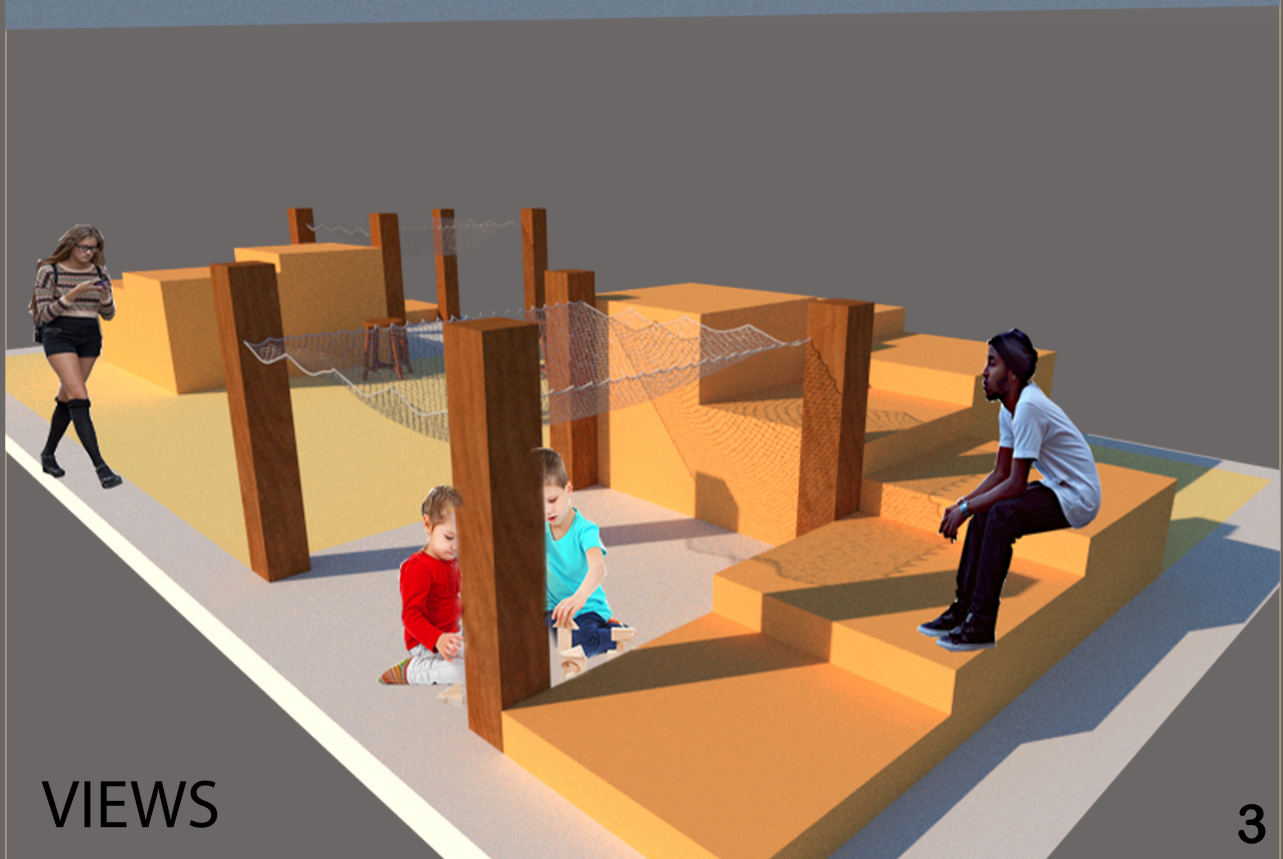
THIS SPACE IS POLYVALENT
AND CAN BE TRANSFORMED
OR CHANGED AS PER NEEDS.

**CONCRETE STEPS**

BEING NEAR TO BAKERY THEY ACT AS
EATING SPACE FOR VISITORS

DESIGN

171duj



VIEWS