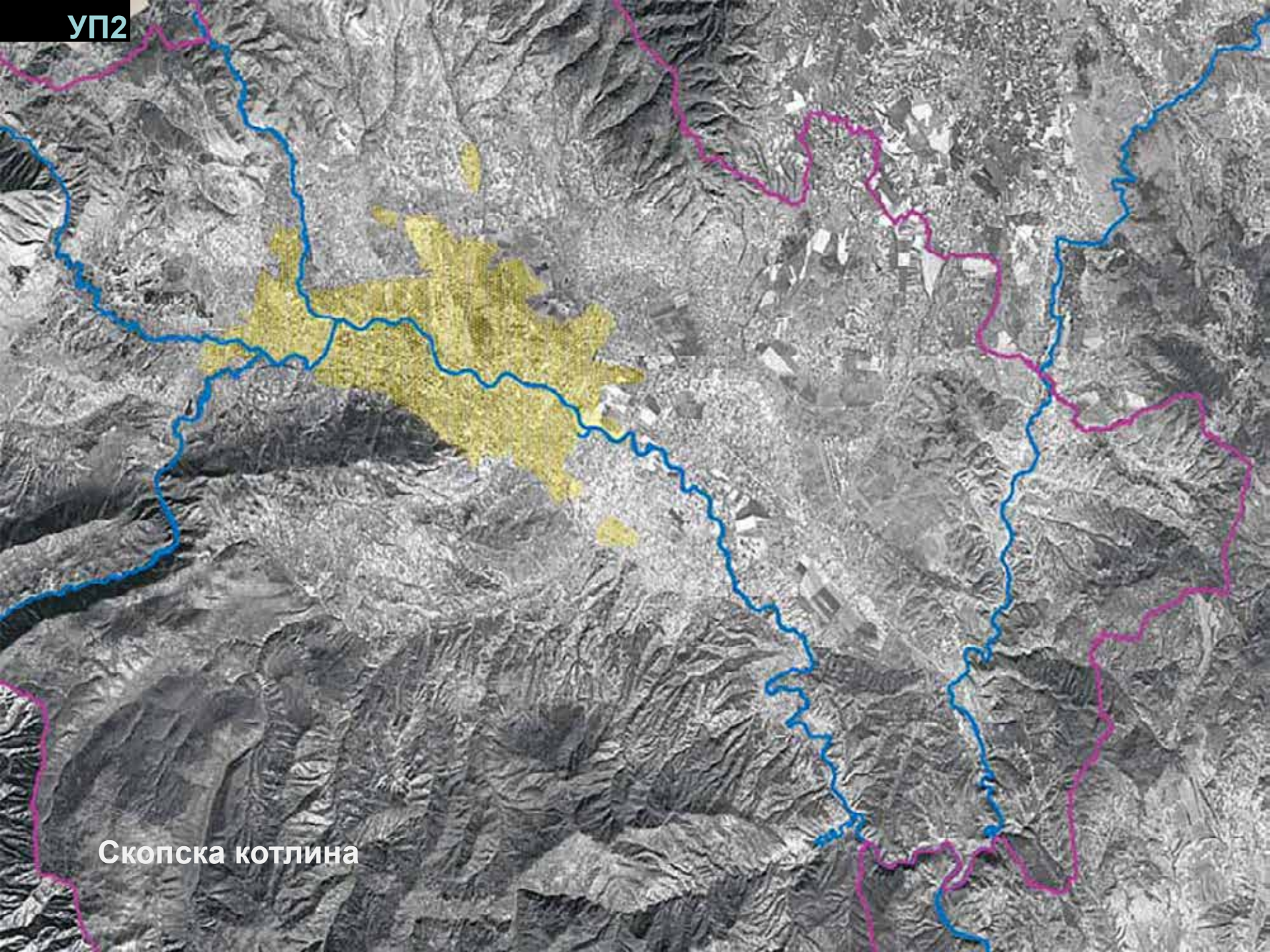


УРБАНИСТИЧКИ ПЛАНОВИ ЗА СКОПЈЕ
планско-просторен развојот на
градот во XX век

УП2



Скопска котлина

УП2

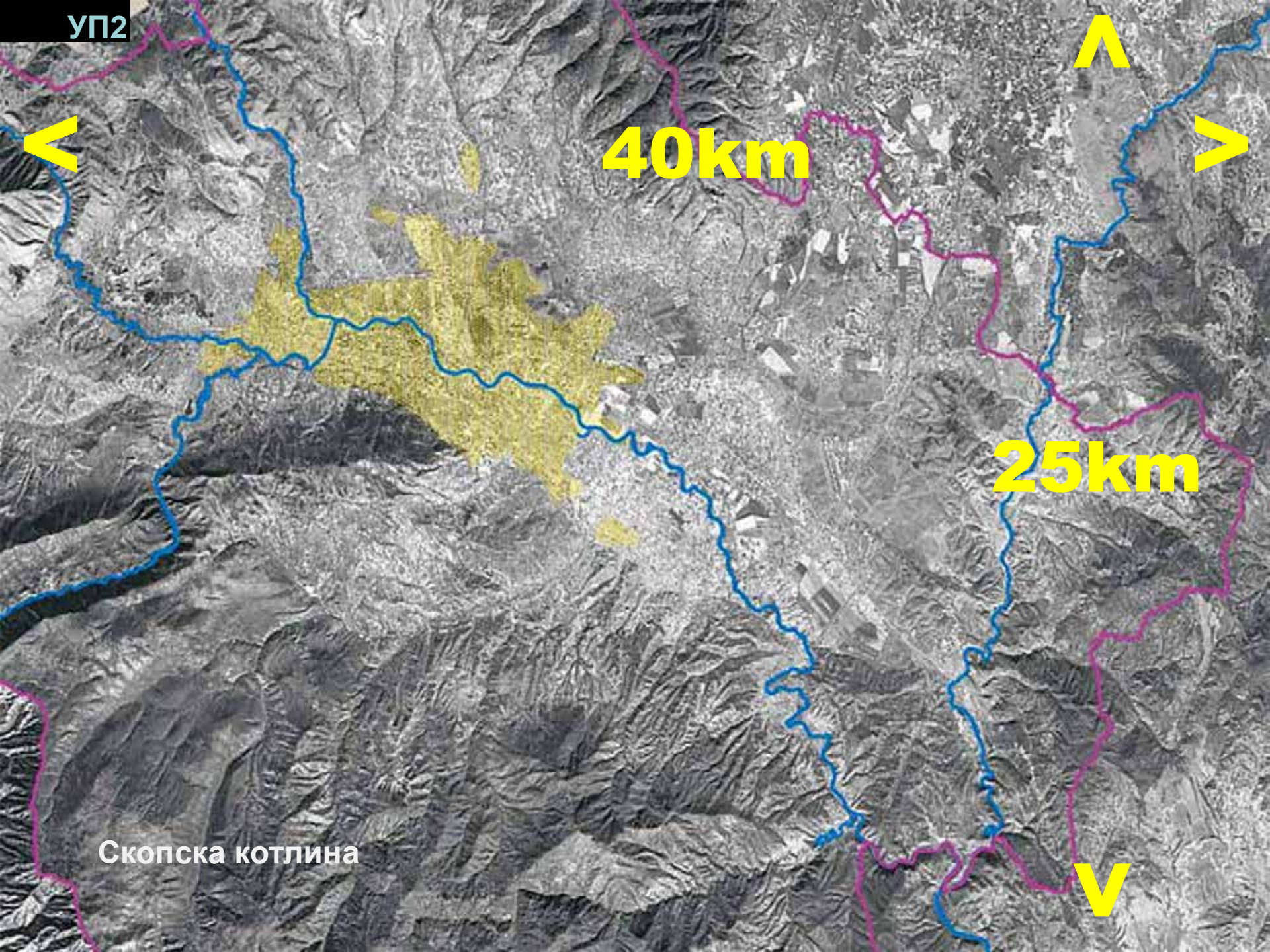


40km



25km

Скопска котлина



УП2



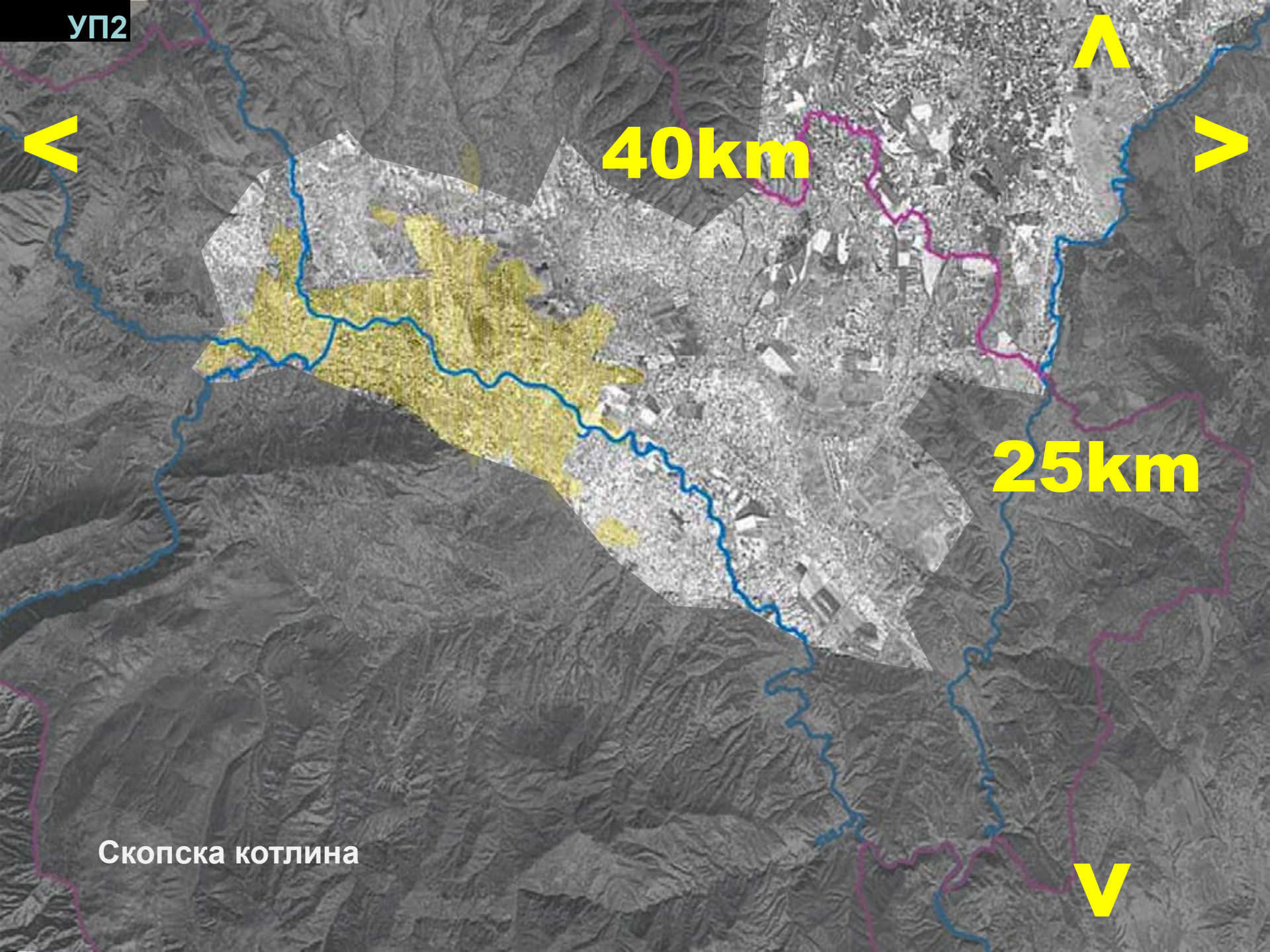
40km



25km



Скопска котлина



УП2

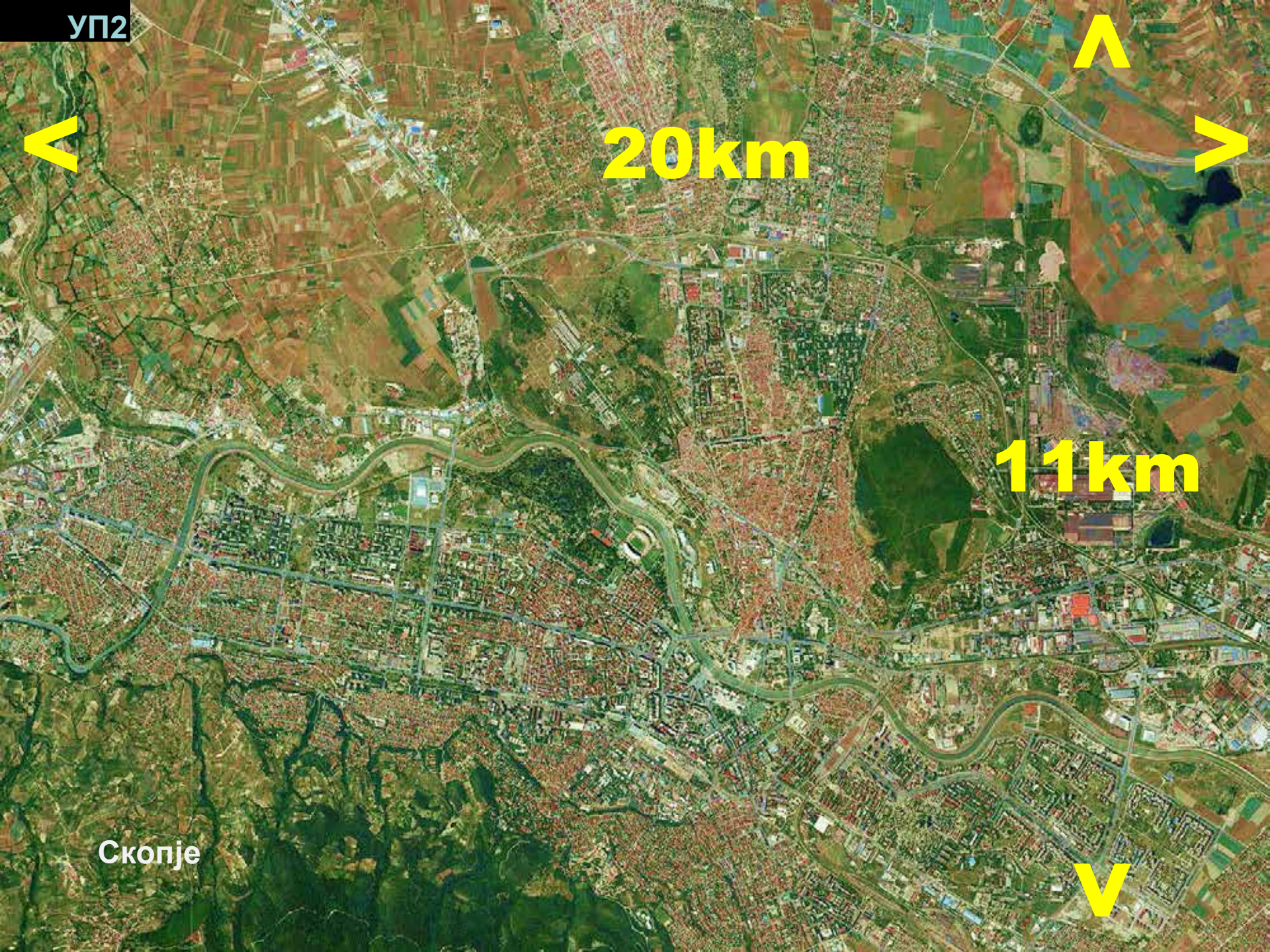


20km

11km



Скопје



УП2



20km

Вардар

Градски
парк

Парк
Гази Баба

11km

Скопје - природни структурирачки елементи

Водно





2km

Централно подрачје

2km



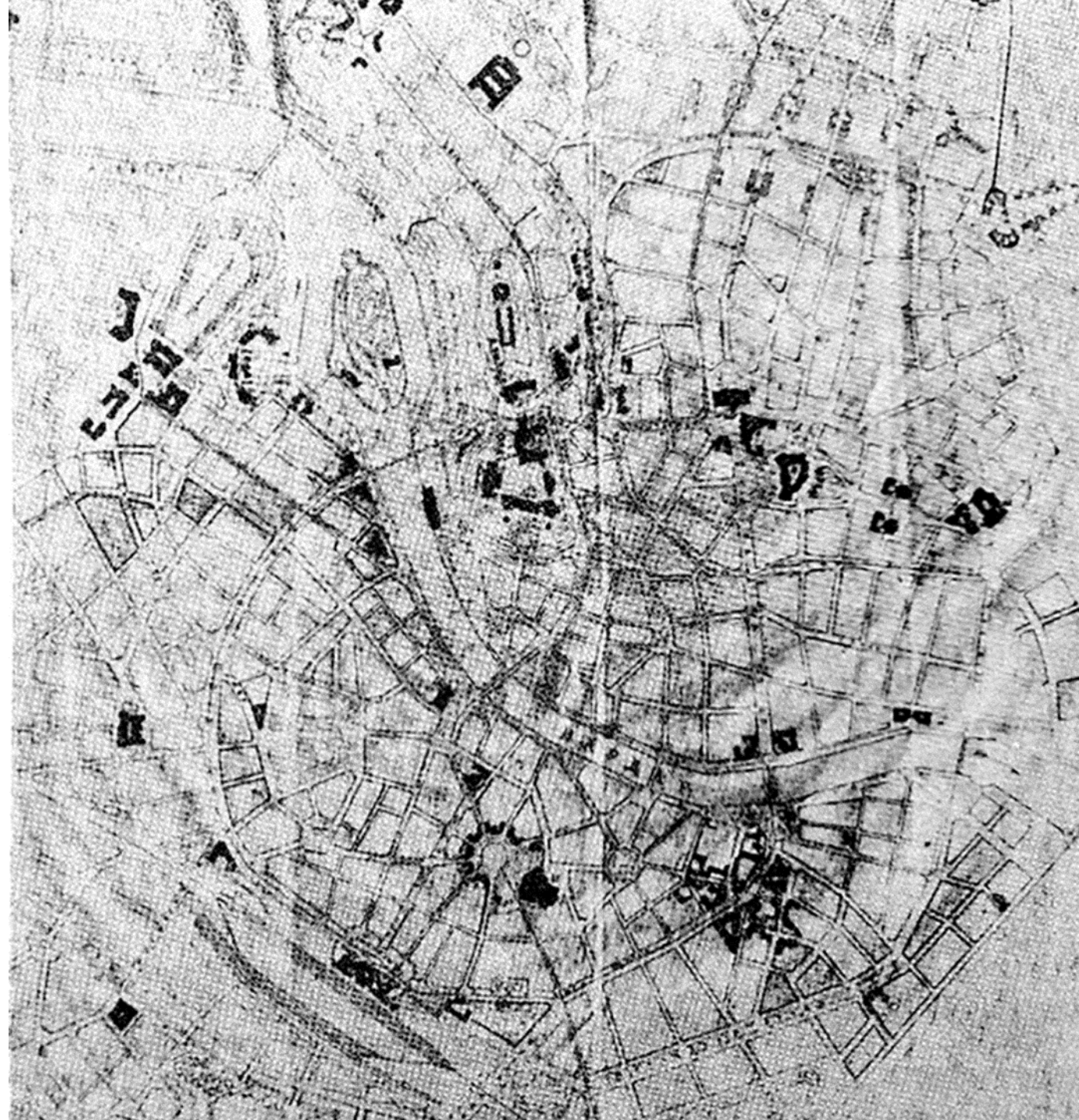
Централно подрачје

2km

Скопје - артифициелни структурирачки елементи



- Прва половина на XX век
- Средина на XX век
- Втора половина на XX век
- Скопје денес



1914 Димитрие Лeko



1929 Јосиф Михајловиќ

УП2



1929 Јосиф Михајловиќ



1949 Лудјек Кубеш

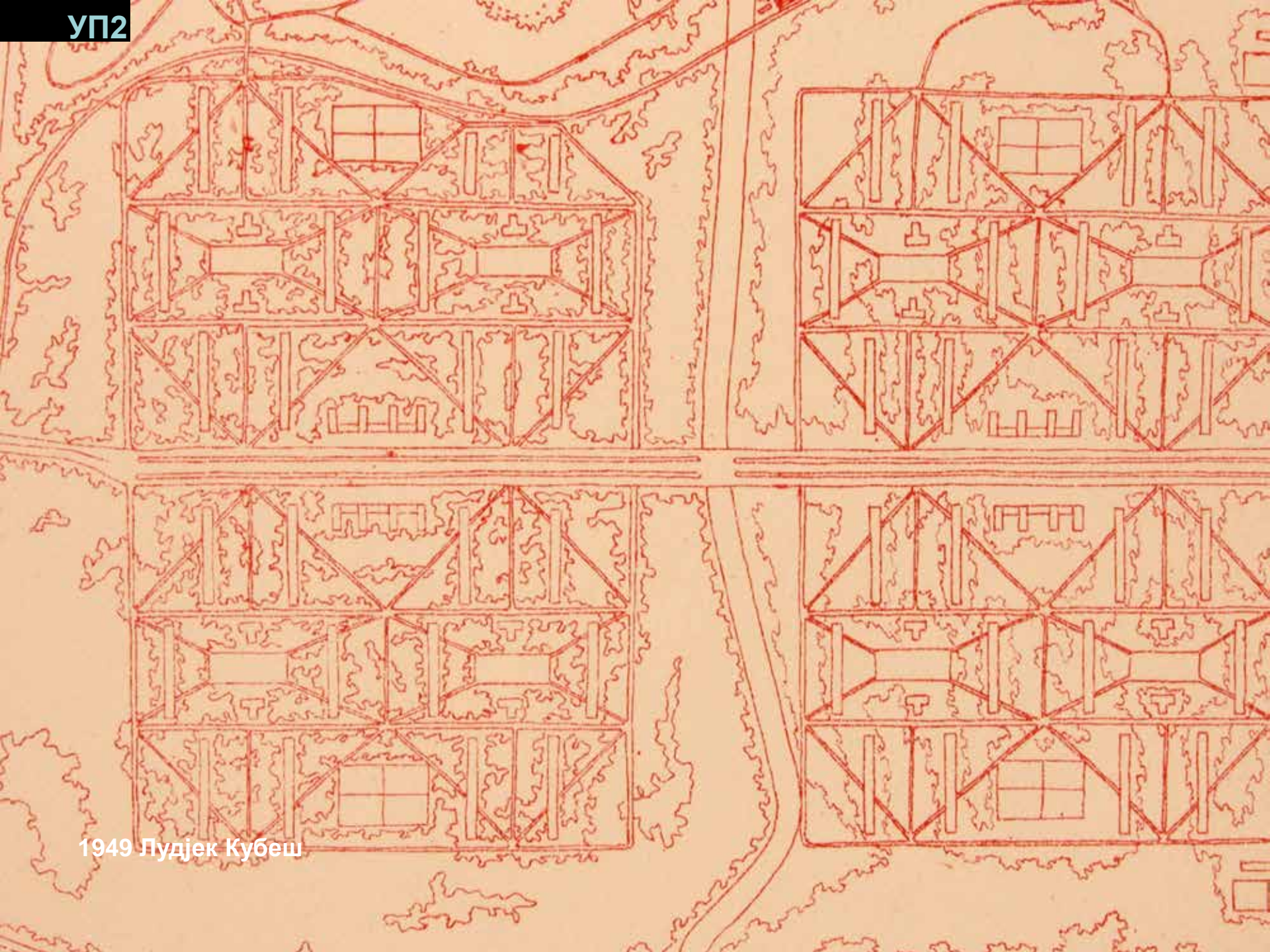
1949 Лудјек Кубеш



УП2



1949 Лудјек Кубеш



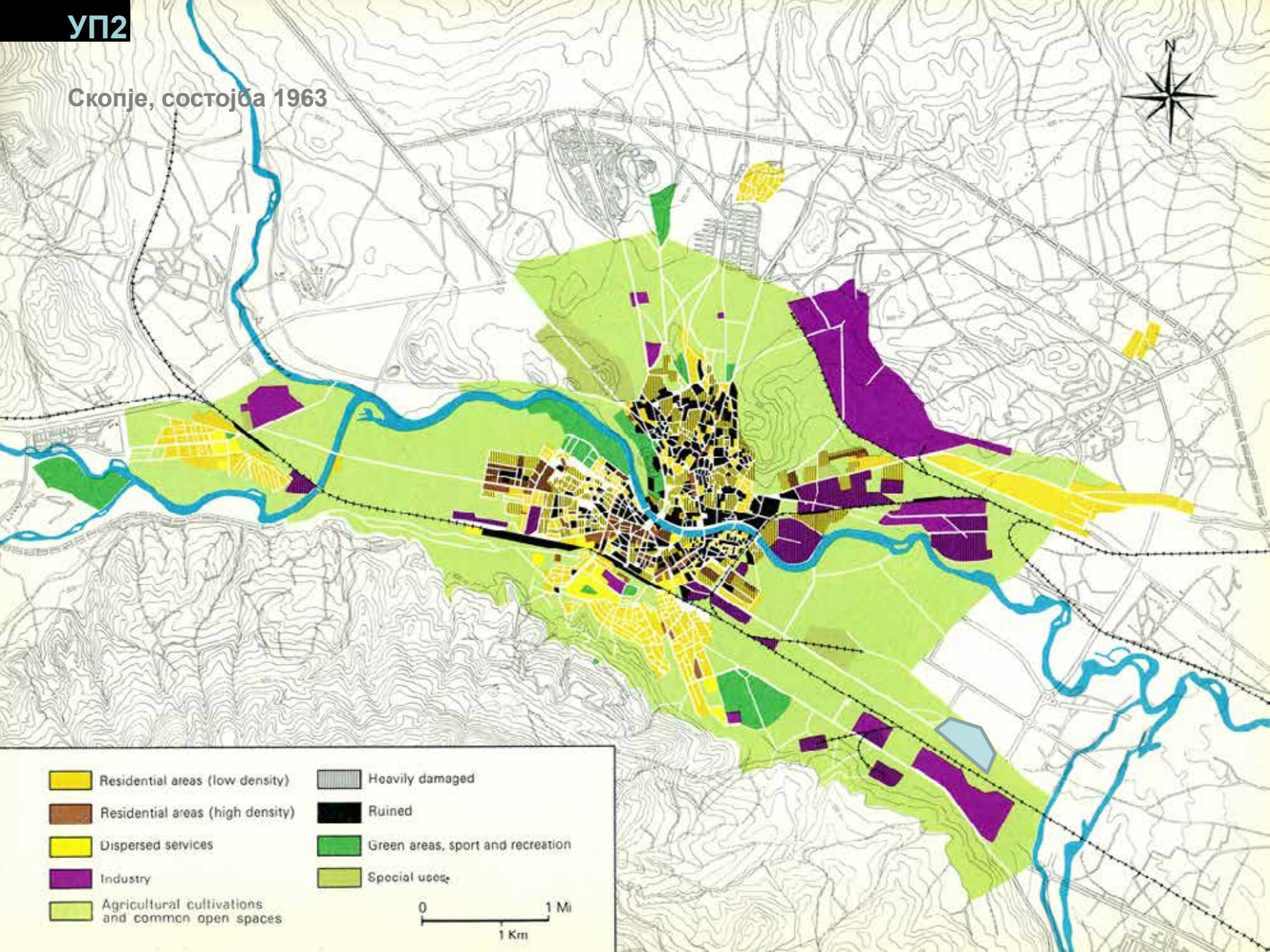
1949 Лудјек Кубеш










26.07.1963 05.20h





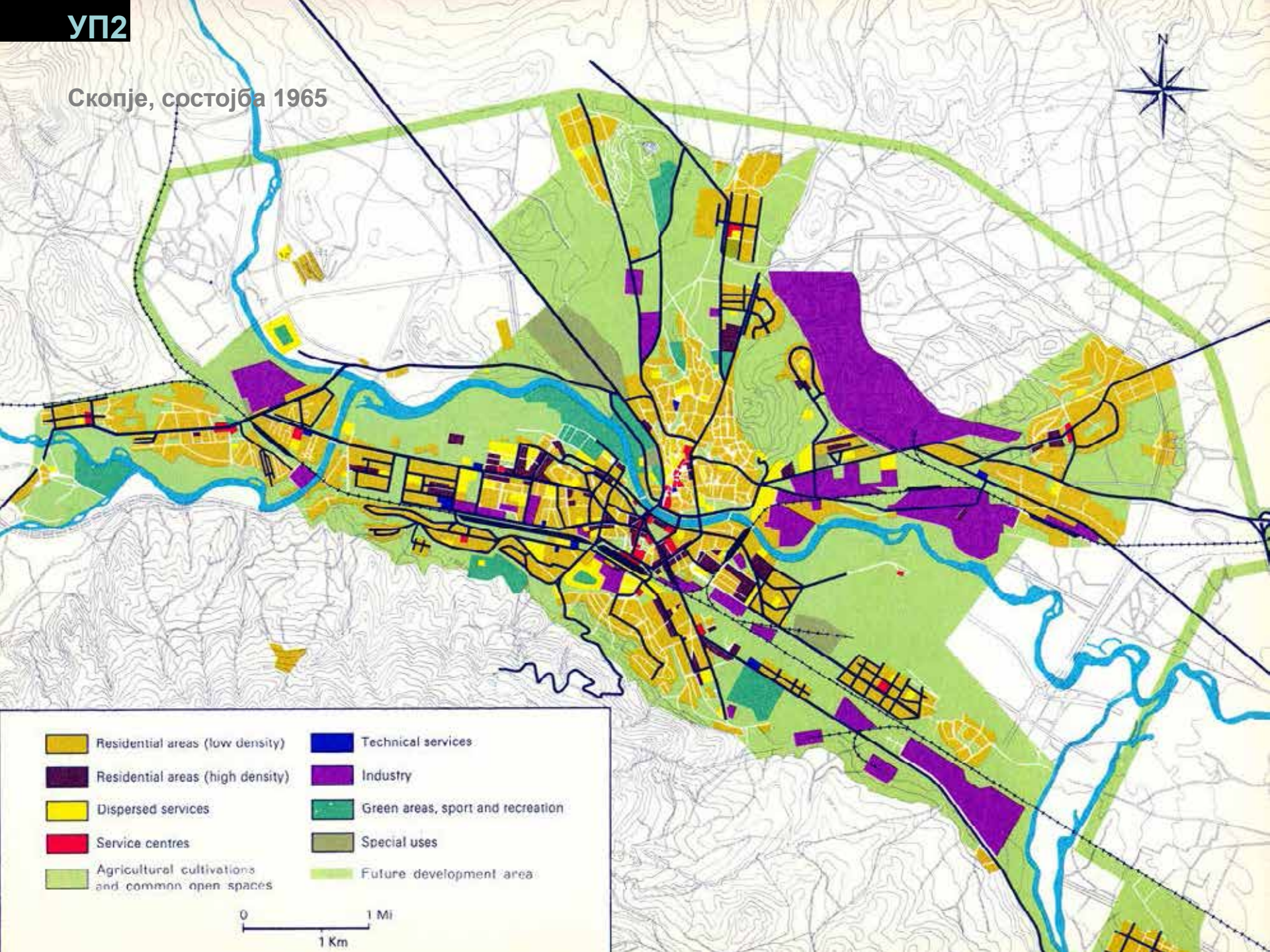
Скопје, состојба 1963



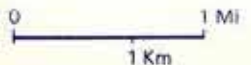
- | | |
|---|---|
|  Residential areas (low density) |  Heavily damaged |
|  Residential areas (high density) |  Ruined |
|  Dispersed services |  Green areas, sport and recreation |
|  Industry |  Special uses |
|  Agricultural cultivations and common open spaces | |

0 1 Mi
1 Km

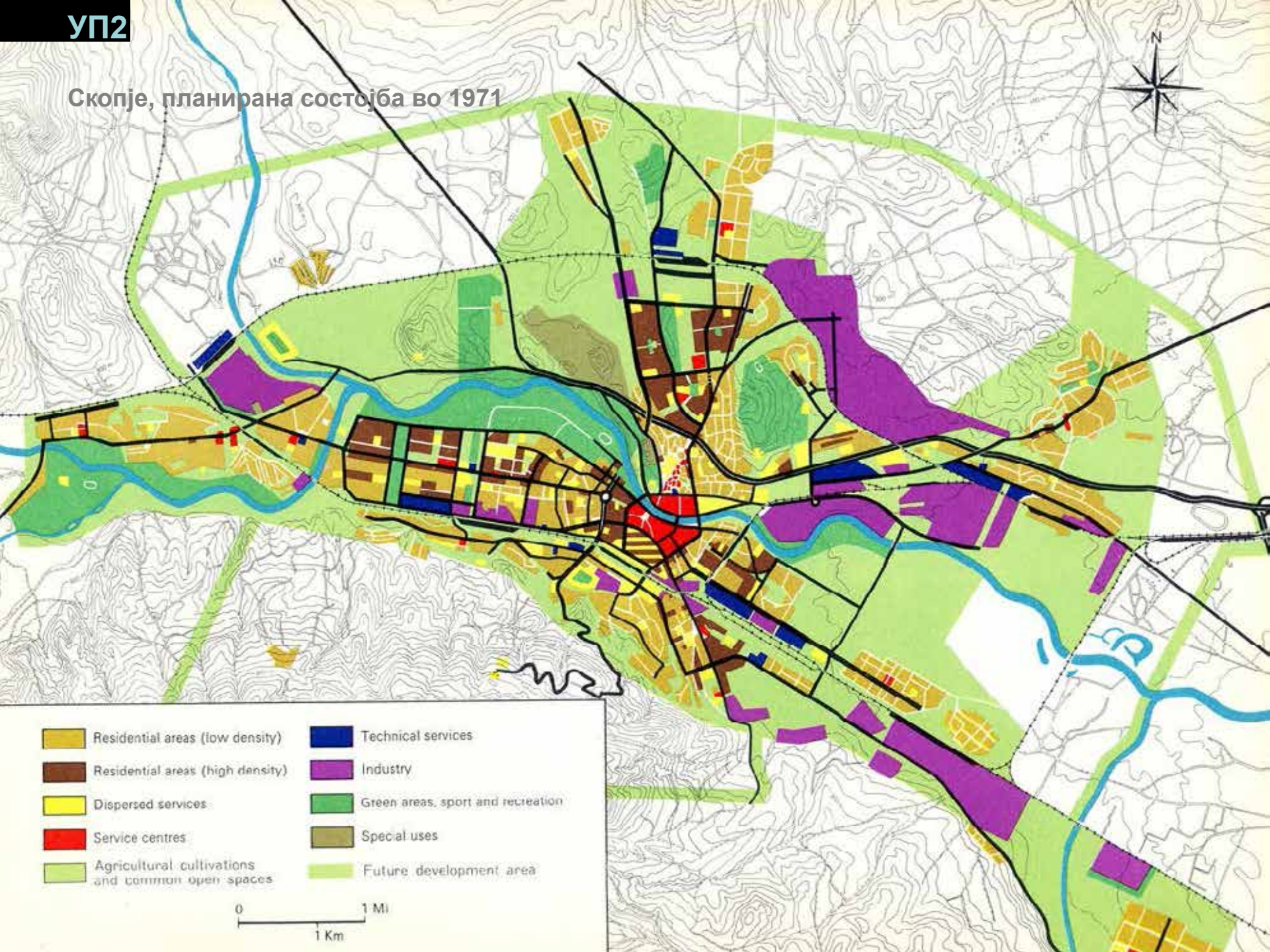
Скопје, состојба 1965



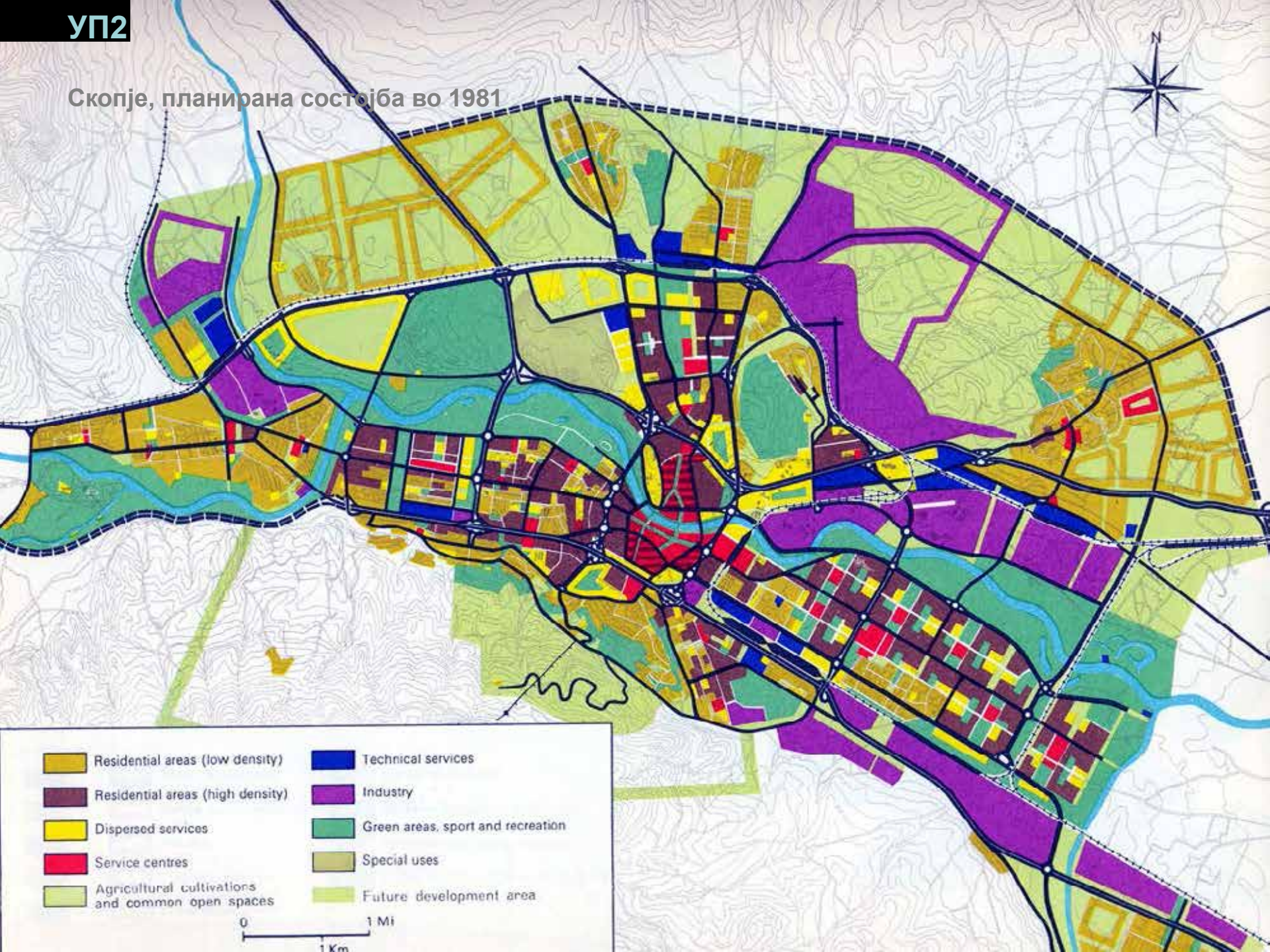
- | | |
|--|-----------------------------------|
| Residential areas (low density) | Technical services |
| Residential areas (high density) | Industry |
| Dispersed services | Green areas, sport and recreation |
| Service centres | Special uses |
| Agricultural cultivations and common open spaces | Future development area |



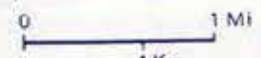
Скопје, планирана состојба во 1971



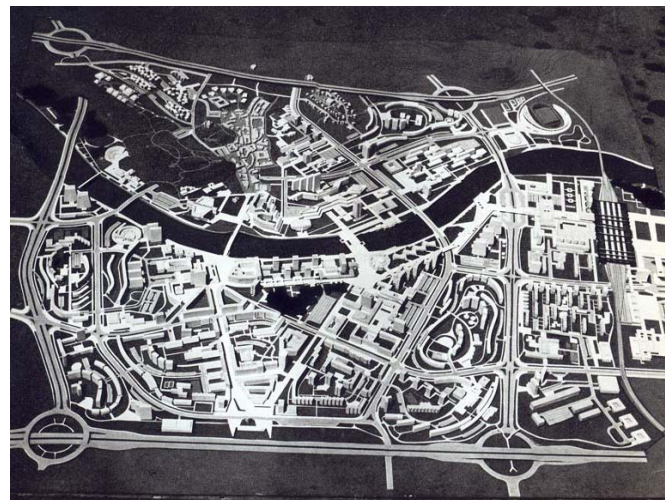
Скопје, планирана состојба во 1981



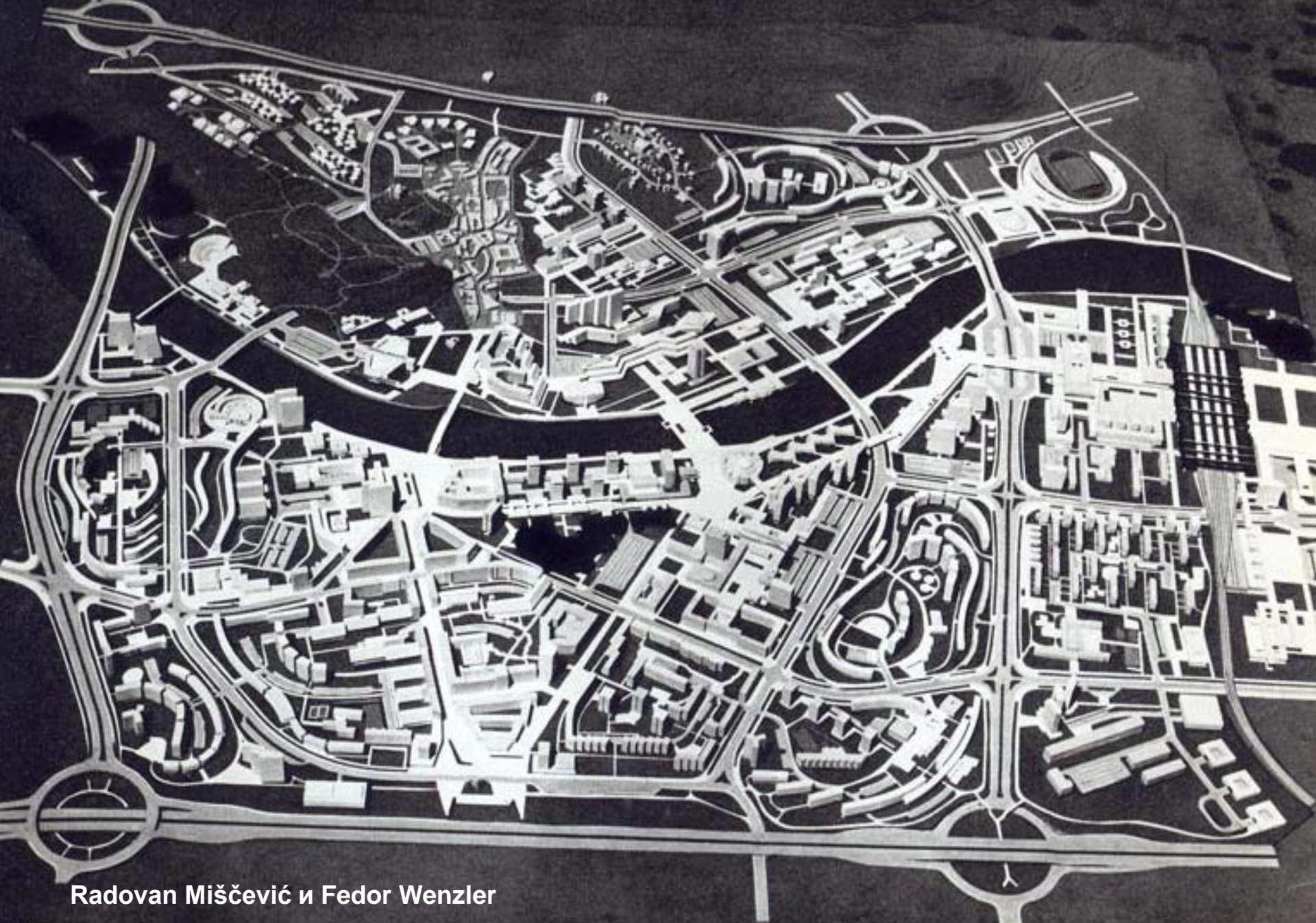
- | | |
|--|-----------------------------------|
| Residential areas (low density) | Technical services |
| Residential areas (high density) | Industry |
| Dispersed services | Green areas, sport and recreation |
| Service centres | Special uses |
| Agricultural cultivations and common open spaces | Future development area |



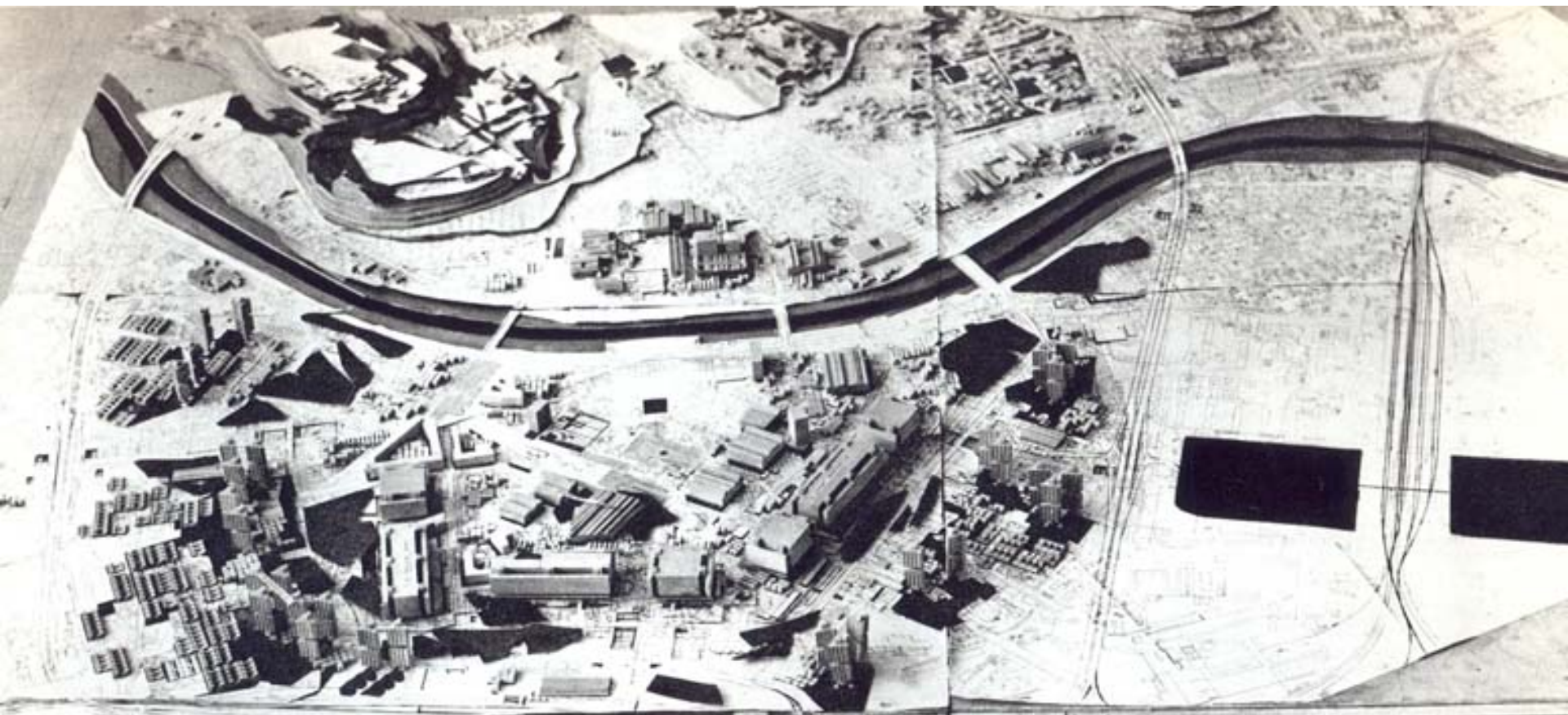
8 конкурсни трудови 1965 за центарот на Скопје







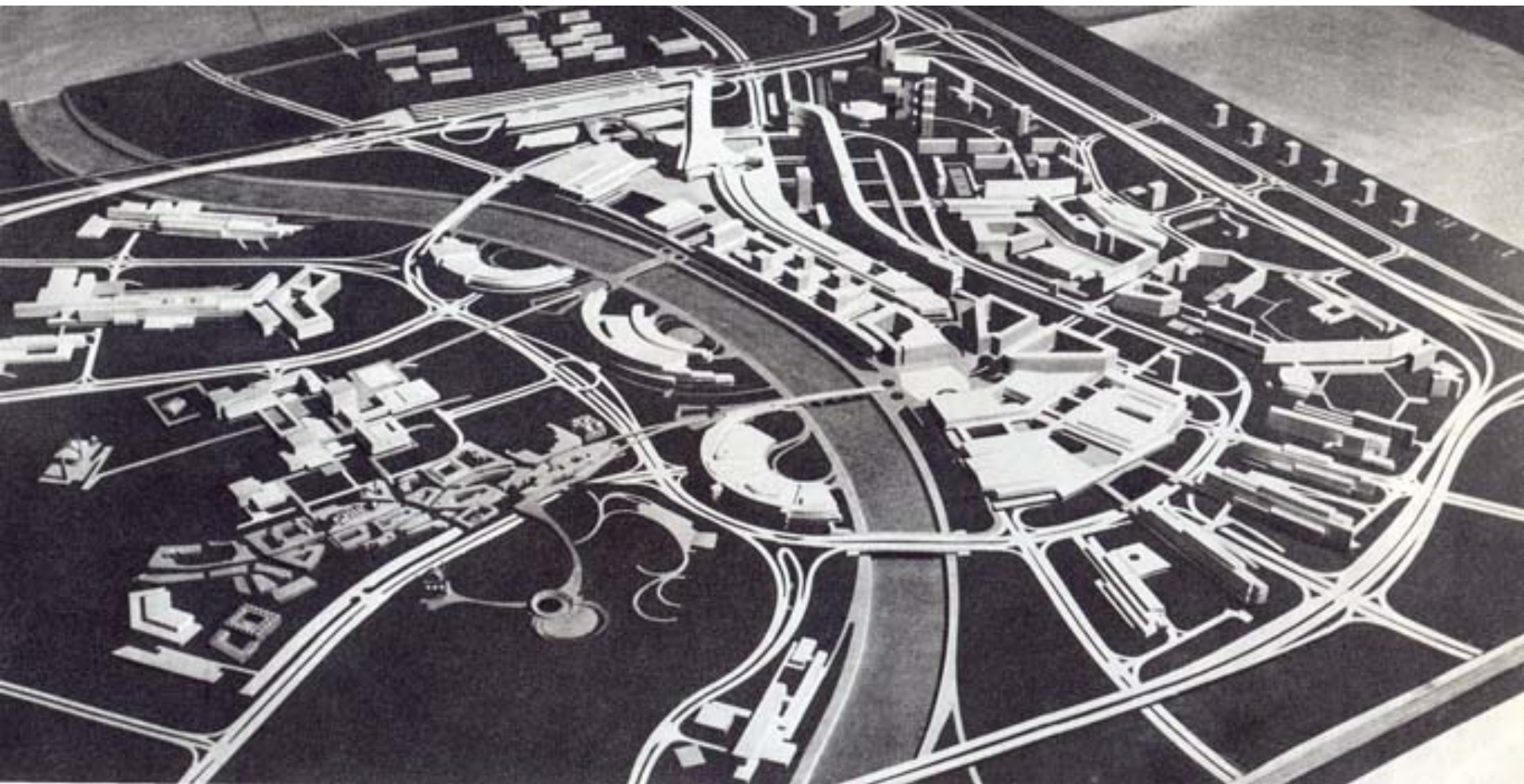
Radovan Mišćević и Fedor Wenzler



Edvard Ravnikar



Luigi Piccinato



Aleksandar Đorđević



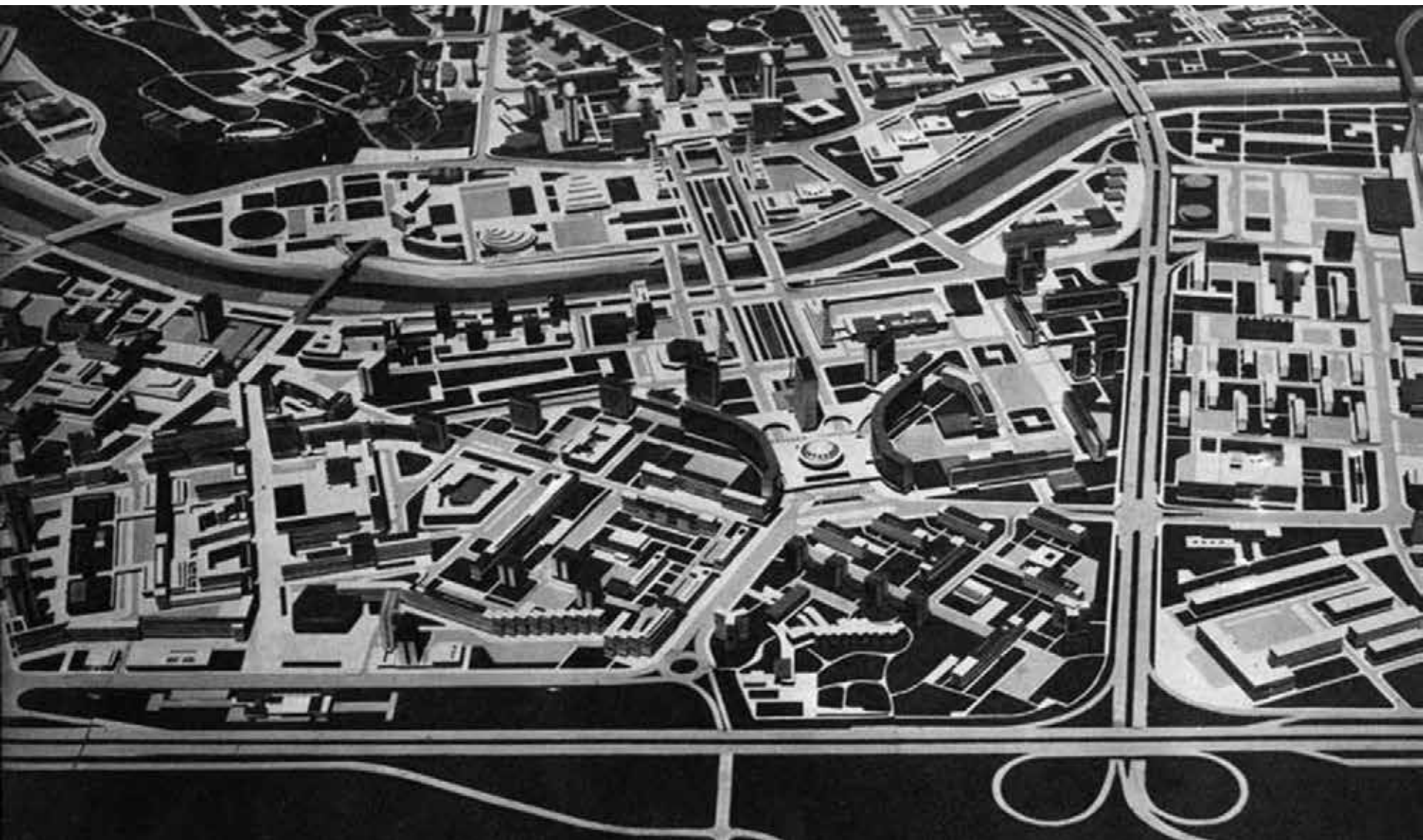
Maurice Rotival

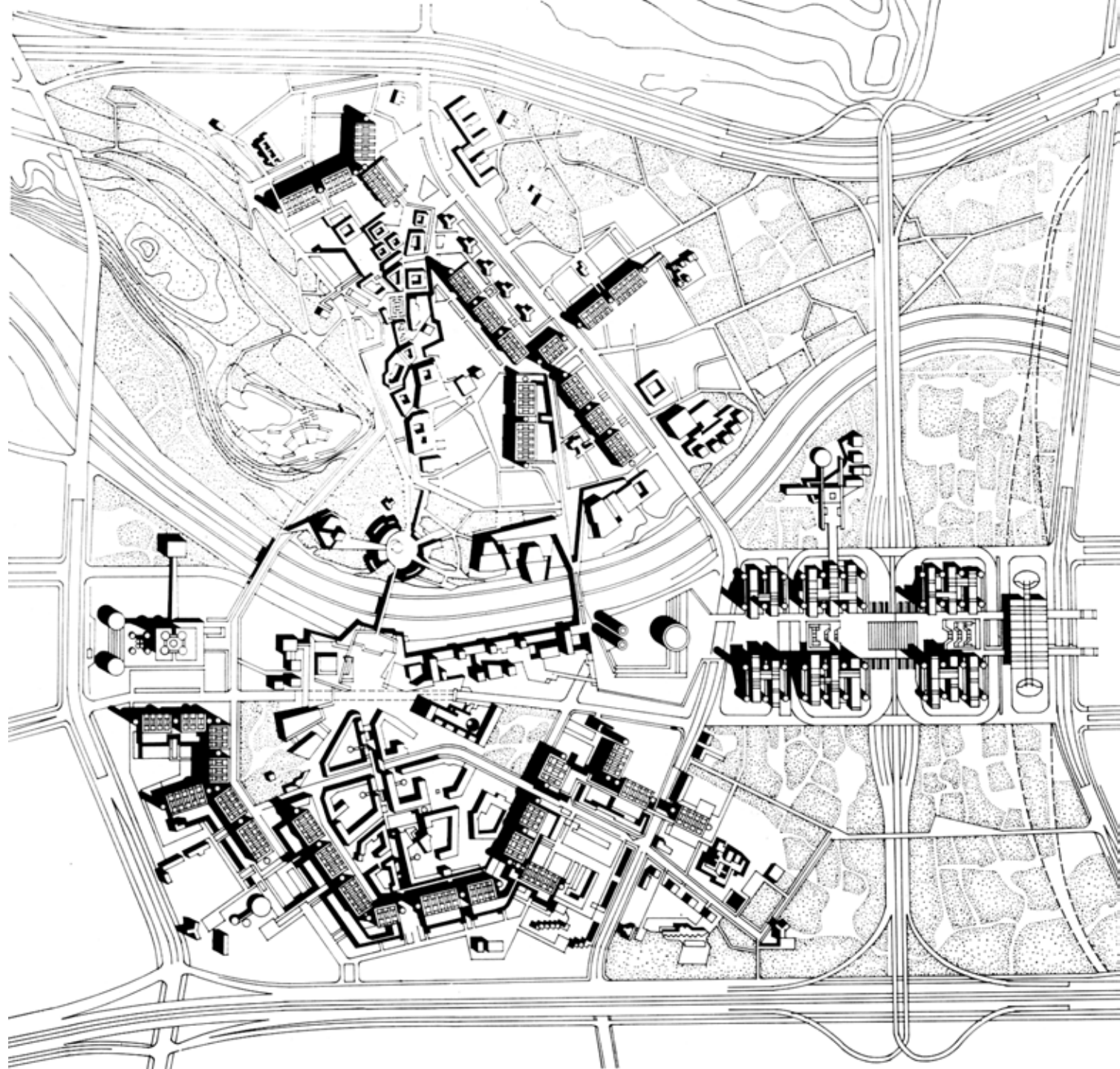
SKOPJE

INTERNATIONAL COMMISSION FOR THE STUDY OF THE CITY OF SKOPJE
STUDY PLAN / CENTRAL PART
MAURICE E. H. ROTIVAL AND ASSOCIATES



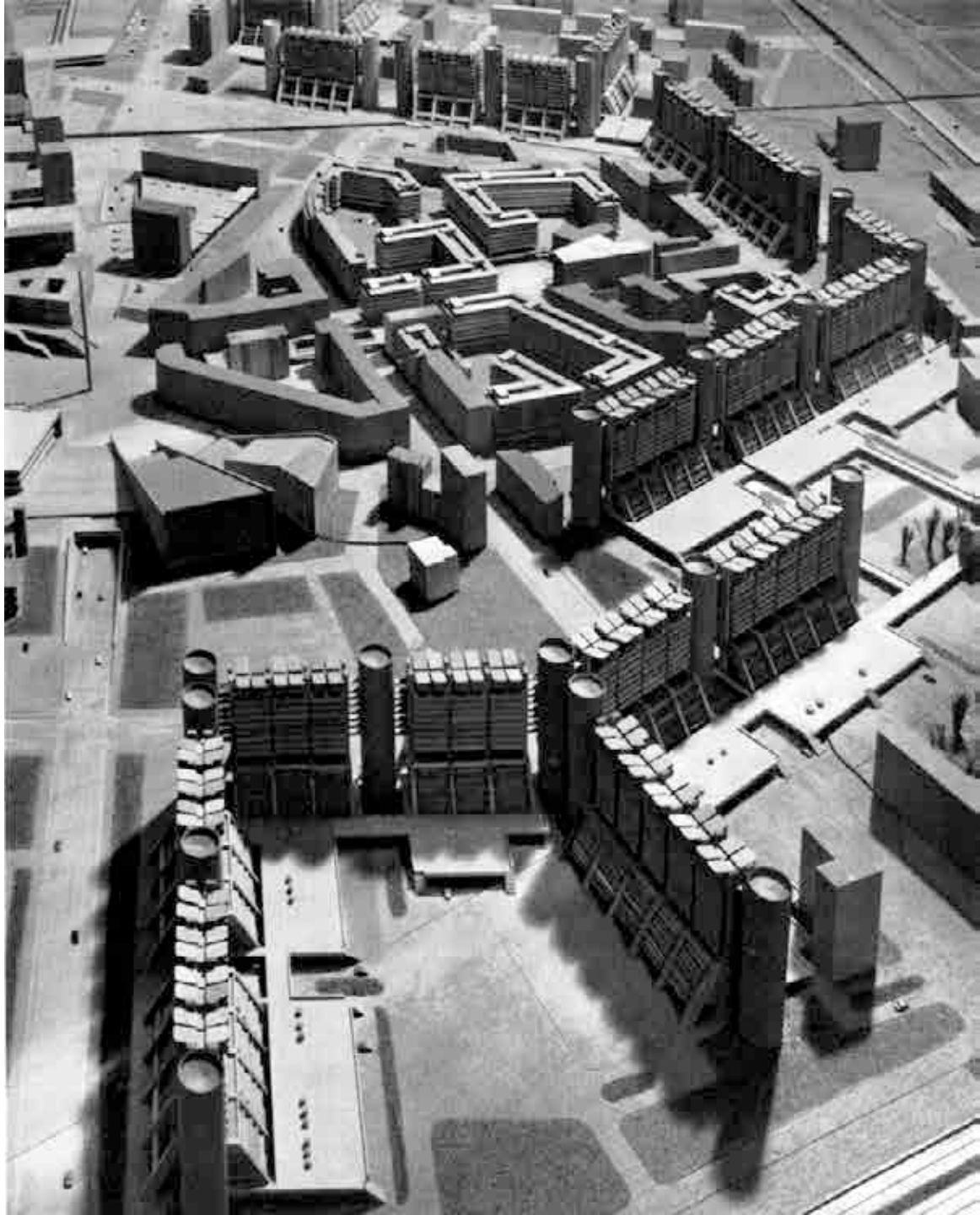
Van den Broek и Bakema





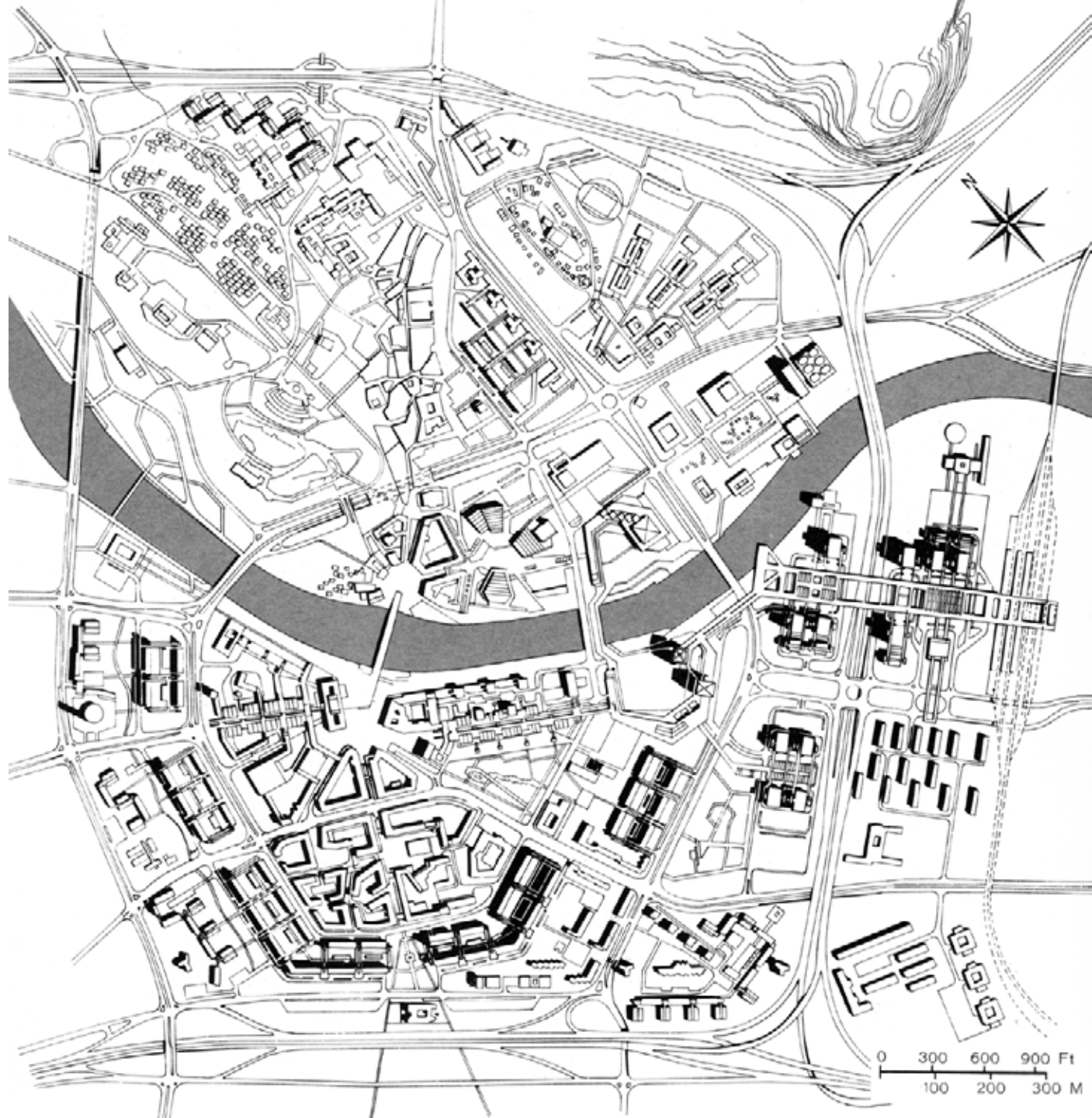


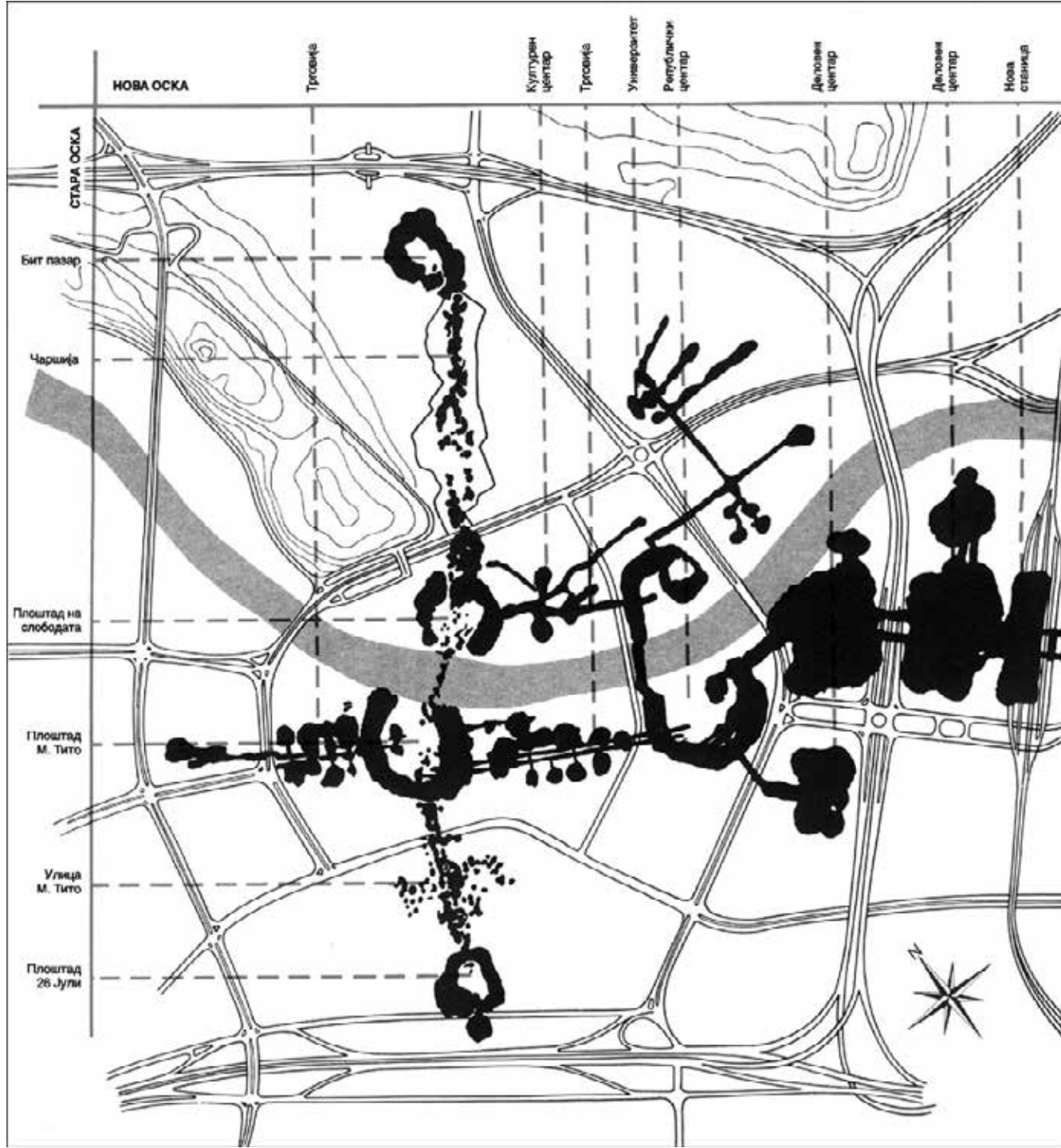


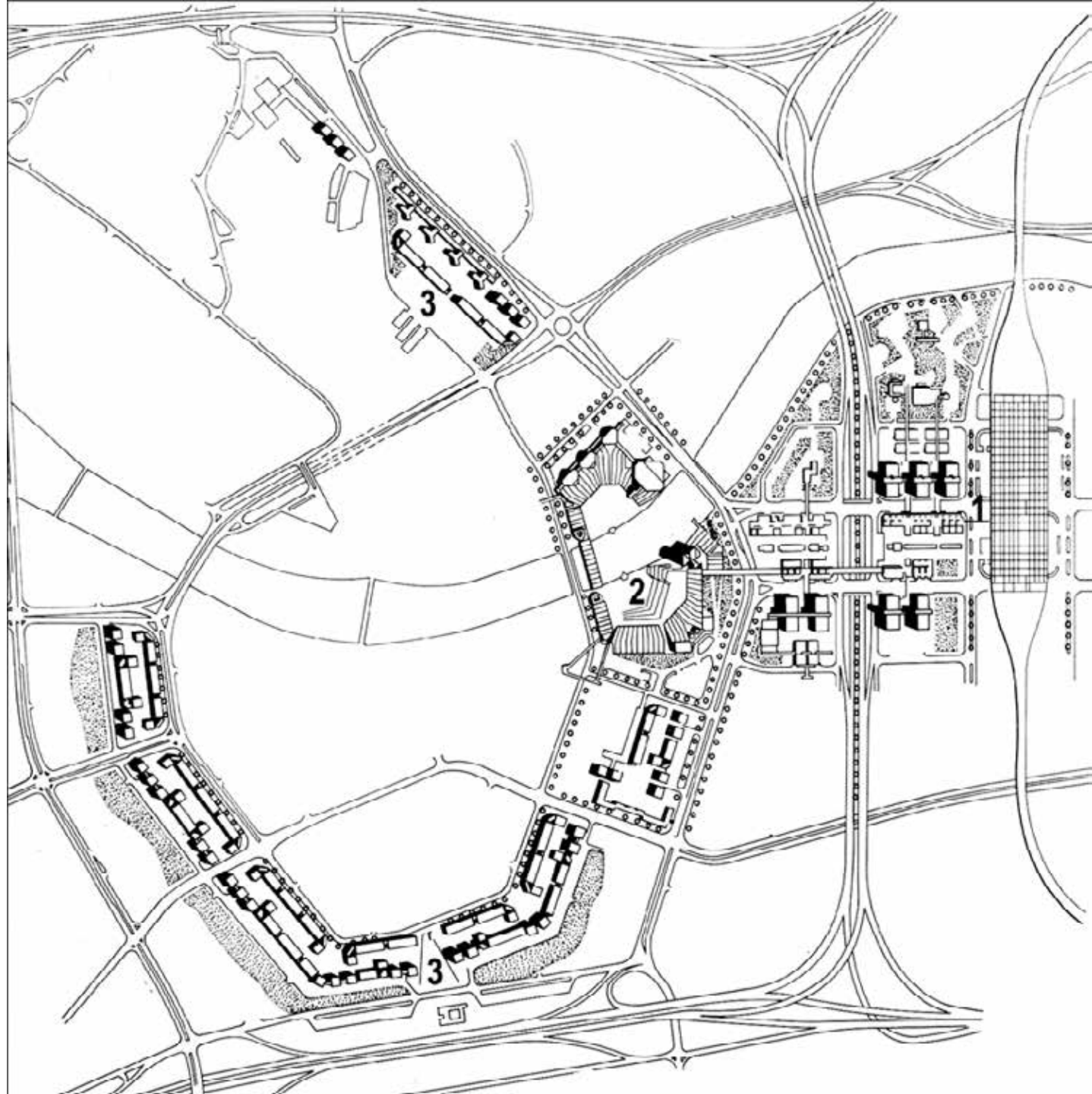


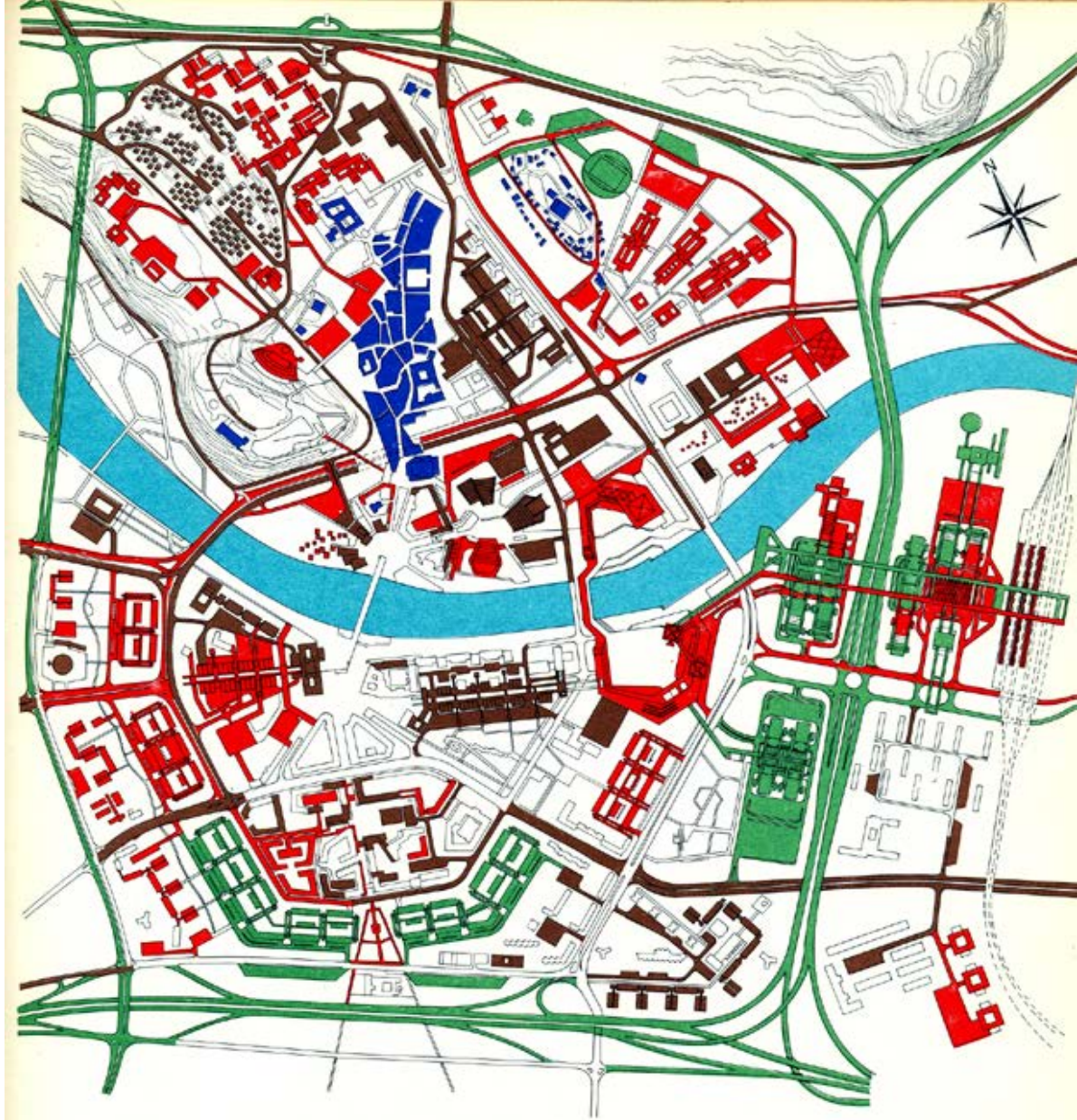


1966





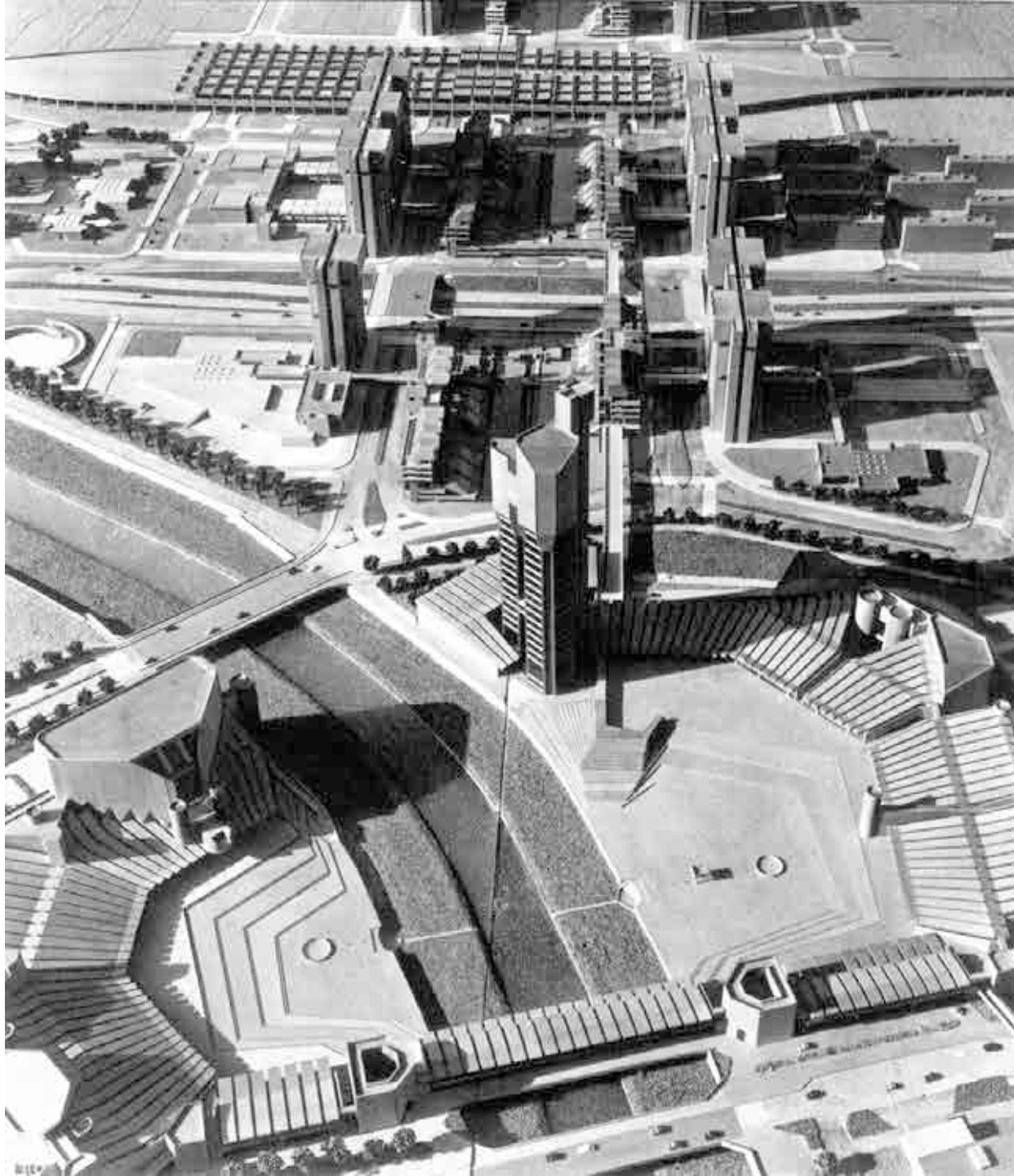




1966

1966-1970—First stage
1971-1975—Second stage

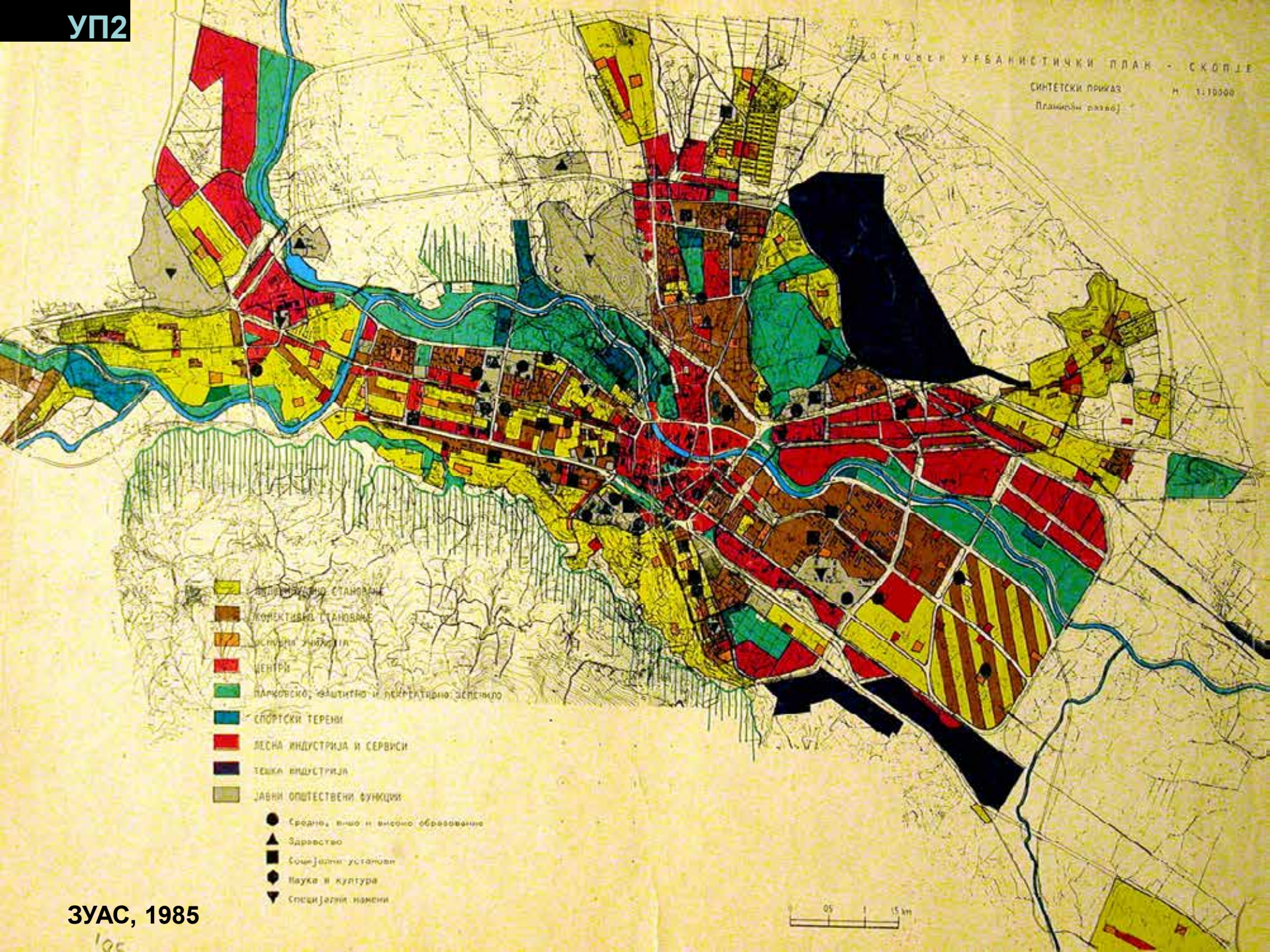
1976-1981—Third stage
Cultural monuments



Градска порта (исток)

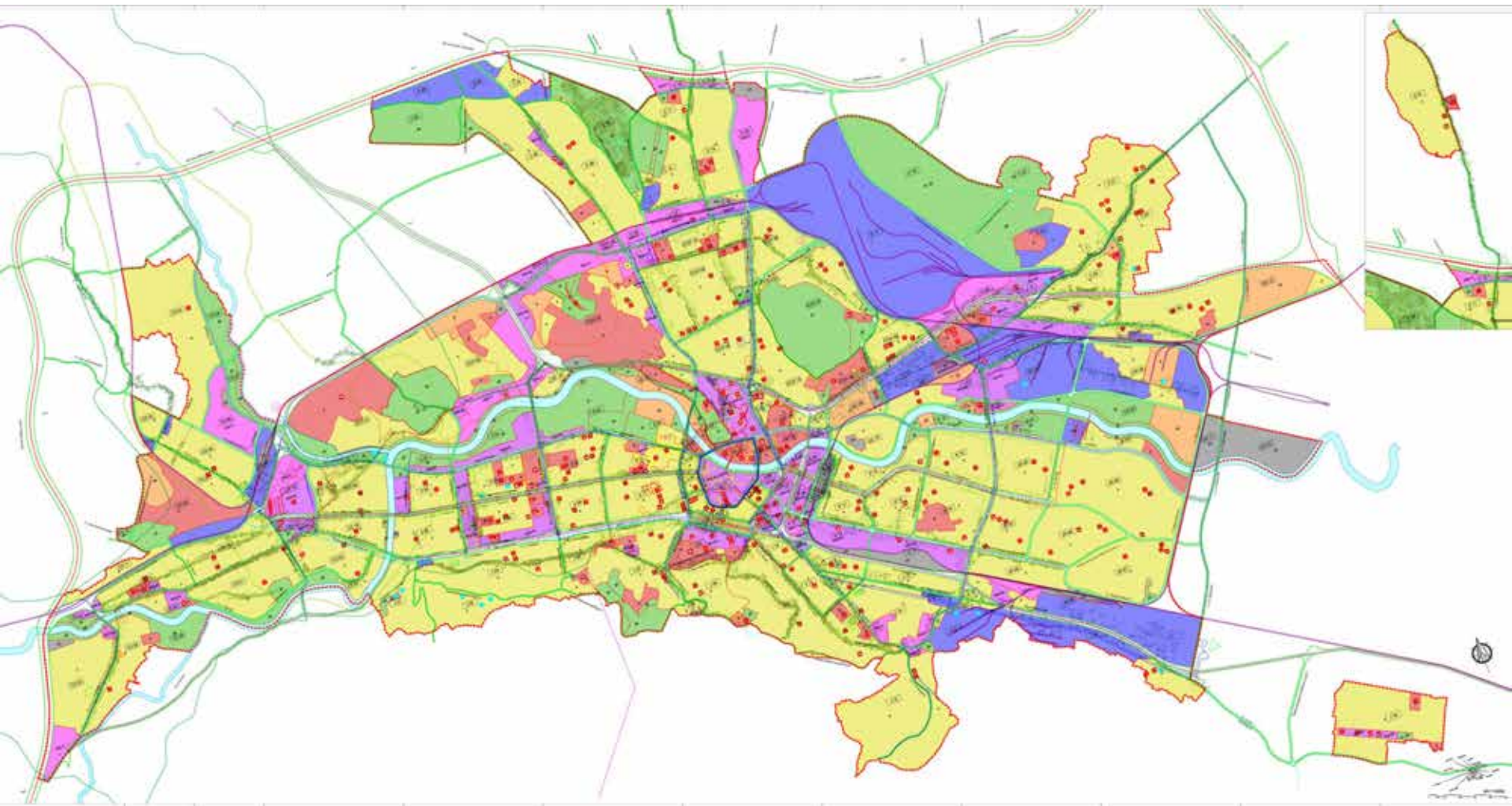


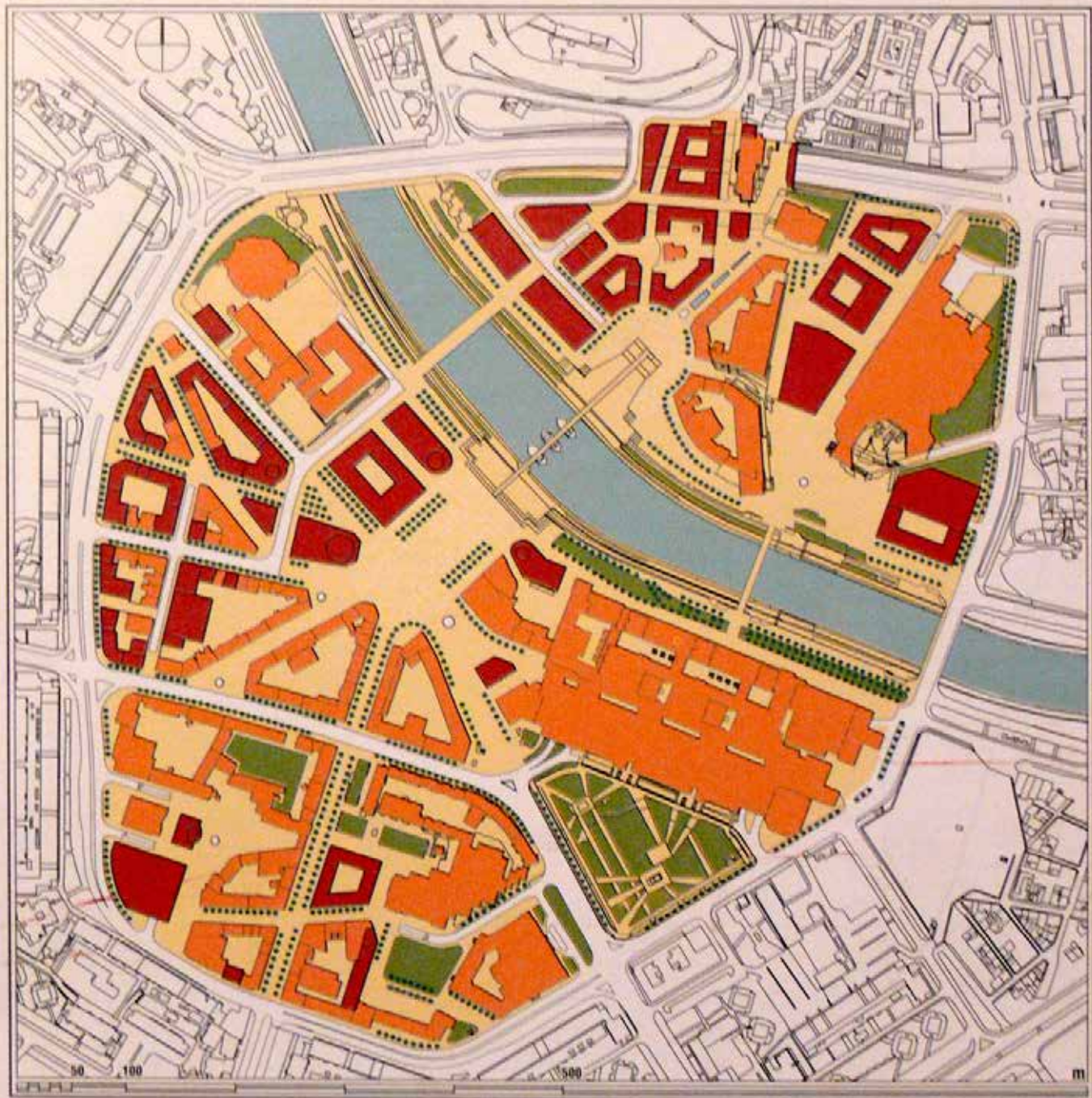
Площадот на Републиката +
Градска Порта



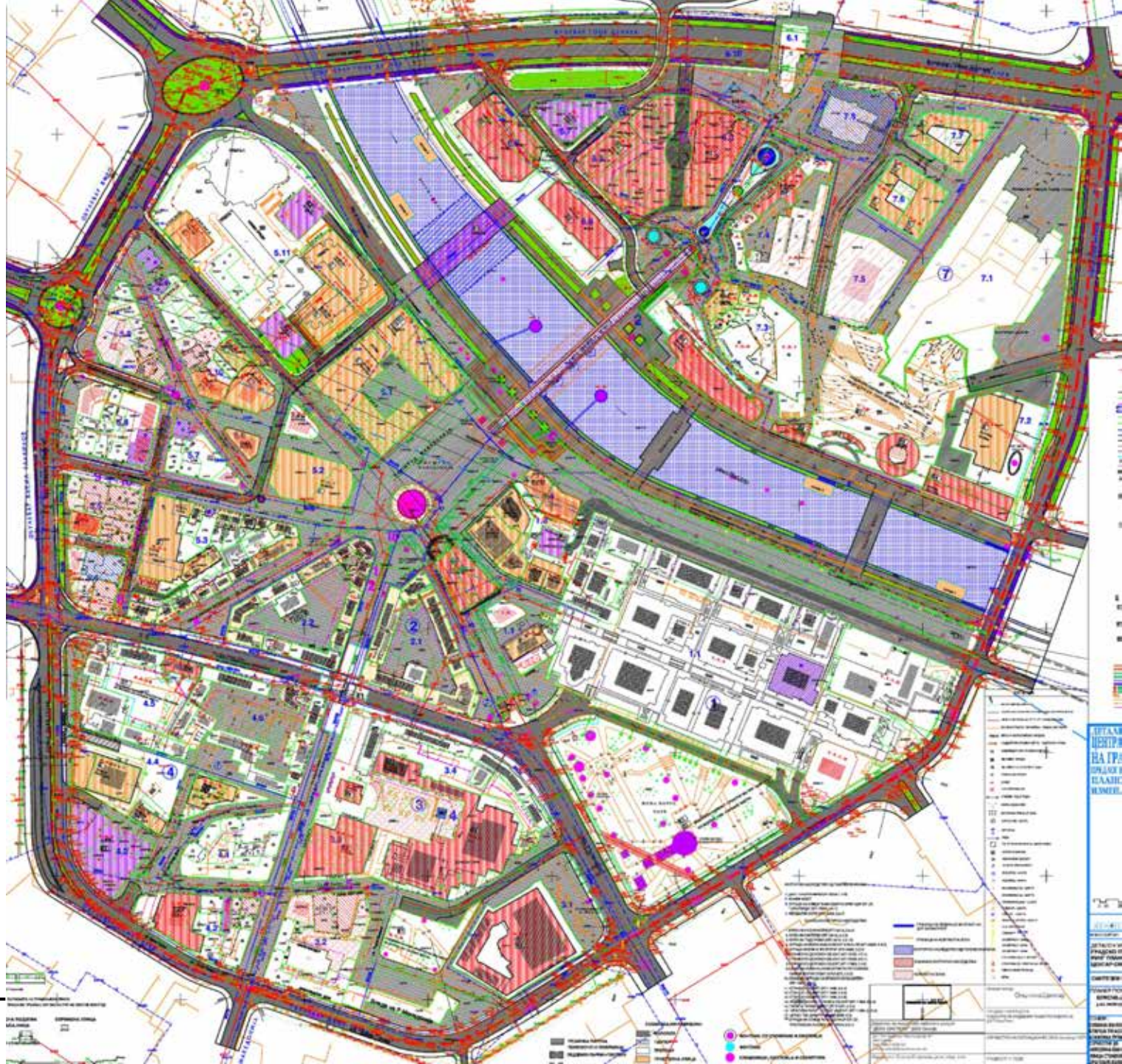
- ИНДИВИДУАЛНО СТАНОВАЊЕ
- КОЛЕКТИВНО СТАНОВАЊЕ
- УСЛОВНИ ЗИДОВИ
- ЦЕНТРИ
- ПАРКОВСКО, ЗАШТИТНО И РЕКРЕАТИВНО ЗЕЛЕНИЛО
- СПОРТСКИ ТЕРЕНИ
- ЛЕСНА ИНДУСТРИЈА И СЕРВИСИ
- ТЕШКА ИНДУСТРИЈА
- ЈАВНИ ОПШТЕСТВЕНИ ФУНКЦИИ
- Средно, вишо и високо образование
- Здравство
- Социјални установи
- Наука и култура
- Специјални намени







Проект за Мал Ринг
1997



ДУП за Мал ринг
2012



27.05.2026 (среда) ПОСЛЕДЕН ТЕРМИН

~~25.05.2026 (понеделник) неработен ден~~

09.15-10.30 часот (предавална 115)

- објаснување на содржината на програмот
- прашања поврзани со тестот
- прашања поврзани со семинарскиот труд
- од 11.15 вежби по вообичаениот распоред